

RNAV (GPS) RWY 25

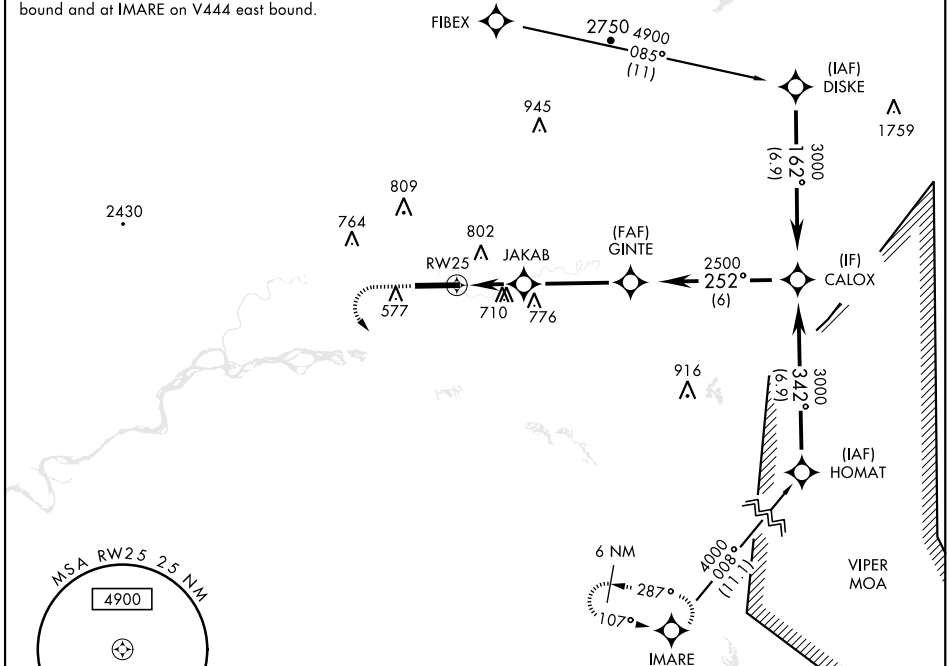
APCH CRS	Rwy Idg	8575
252°	TDZE	449
	Arpt Elev	449

AL-1219 [USA]

LADD AAF (PAFB)

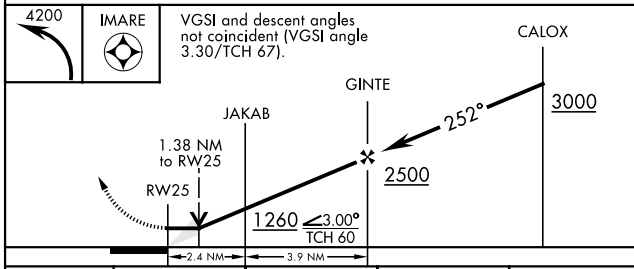
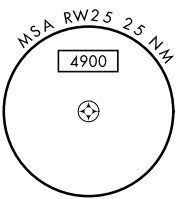
RNP APCH-GPS		ALSF-1	MISSED APPROACH: Climbing left turn to 4200 direct IMARE and hold.	
<p>▼ * When ALS inop, increase CAT CD vis to 1½ miles. ** Circling not authorized N of Rwy 7-25.</p>				
ATIS	FAIRBANKS APP CON	TOWER*	GND CON	ASR/PAR
134.25	127.1 251.1 360° - 179° 125.35 363.2 180° - 359°	125.0 (CTAF) 284.6	121.7 263.15	

Procedure NA for arrivals at FIBEX on V301 southwest bound and at IMARE on V444 east bound.

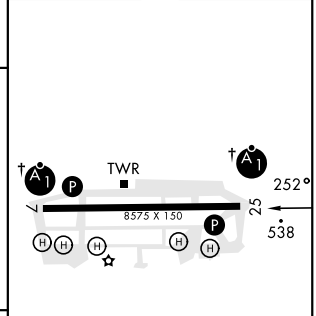


AK, 31 OCT 2024 to 26 DEC 2024

AK, 31 OCT 2024 to 26 DEC 2024



ELEV	449	TDZE	449
------	-----	------	-----



CATEGORY	A	B	C	D
LNAV MDA*	1000-1 551 (600-1)		1000-1½ 551 (600-1½)	
** CIRCLING	1000-1 551 (600-1)	1040-1 591 (600-1)	1080-1¾ 631 (700-1¾)	1160-2¼ 711 (800-2¼)

HIRL Rwy 7-25 † ALS non-standard

RNAV (GPS) RWY 25