


LOC/DME I-OME 108.7 Chan 24	APP CRS 279°	Rwy Idg 6009 TDZE 25 Apt Elev 41
--	------------------------	---

ILS Y or LOC Y RWY 28

NOME (OME)(PAOM)

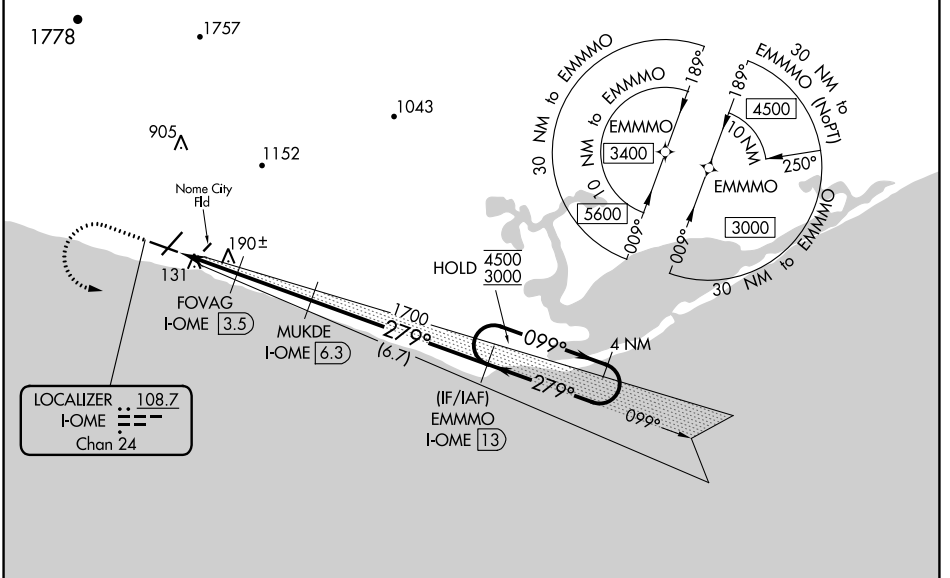
RNAV 1-GPS required. DME required.

⚠ Circling Rwy 21 NA at night. Rwy 28 helicopter visibility reduction below RVR 4000 NA. For inop ALS, increase S-LOC 28 Cats A/B visibility to RVR 5500 and Cats C/D visibility to RVR 6000. Inop table does not apply to S-ILS Rwy 28. Circling NA for Cats C and D north of Rwy 10-28.

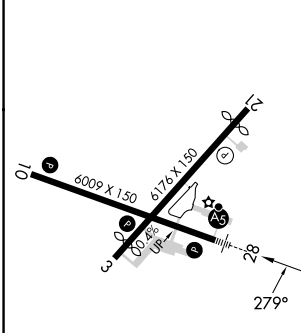
MALSR 

MISSED APPROACH: Climb to 1300 then climbing left turn to 3000 direct EMMMO and hold.

AFIS 119.925	ANCHORAGE CENTER 133.3 290.4	NOME RADIO 123.6 (CTAF) 1
------------------------	--	-------------------------------------



ELEV 41	D	TDZE 25
---------	----------	---------



1300	3000	EMMMO I-OME 13	Use I-OME DME when on localizer course.	EMMMO I-OME 13	4 NM Holding Pattern
* LOC only.		FOVAG I-OME 3.5	MUKDE I-OME 6.3	1700	099° → 4500 ← 279° 3000
I-OME 1.2	* I-OME 2.4	1700	800*	279°	1700
-1.2 NM		-1.1 NM	2.8 NM	6.7 NM	
GS 3.00° TCH 51					

CATEGORY	A	B	C	D
S-ILS 28		275/40	250 (300-¾)	
S-LOC 28		440/40	415 (400-¾)	
C CIRCLING	540-1	499 (500-1)	540-1½ 499 (500-1½)	700-2 659 (700-2)

- REIL Rwys 3 and 10 **1**
- HIRL Rwy 10-28 **1**
- MIRL Rwy 3-21 **1**

AK, 31 OCT 2024 to 26 DEC 2024

AK, 31 OCT 2024 to 26 DEC 2024