

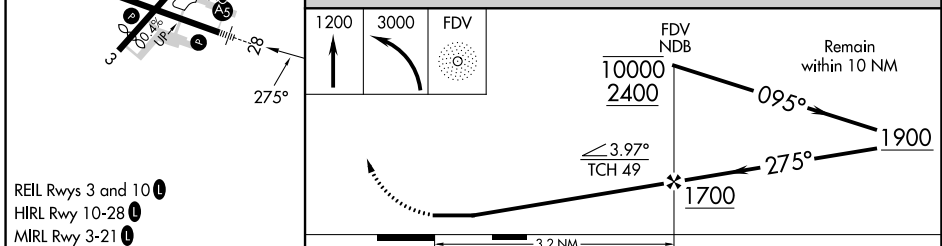
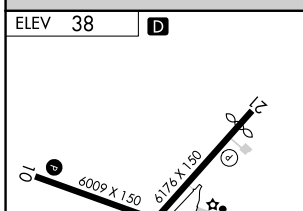
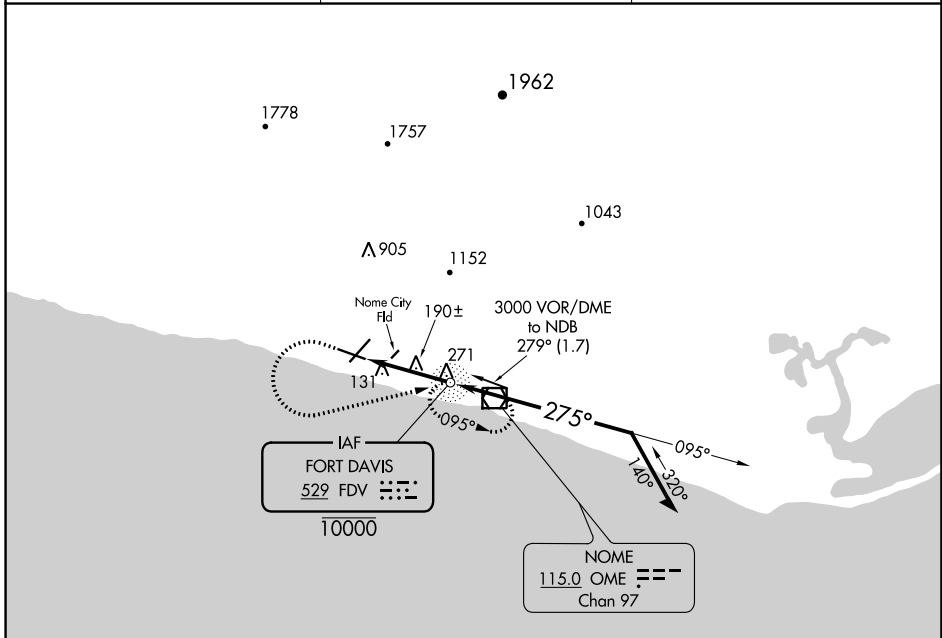
NDB FDV <b>529</b>	APP CRS <b>275°</b>	Rwy Idg TDZE Apt Elev	<b>N/A</b> <b>N/A</b> <b>38</b>
-----------------------	------------------------	-----------------------------	---------------------------------------

**NDB-A**  
NOME (OME)(PAOM)

**▼** Circling NA for Cats C and D north of Rwy 10-28.  
Helicopter visibility reduction below 1 SM NA.  
Night Landing: Rwy 21, NA.

MISSED APPROACH: Climb to 1200 then climbing left turn to 3000 direct FDV NDB and hold.

AFIS <b>119.925</b>	ANCHORAGE CENTER <b>133.3 290.4</b>	NOME RADIO <b>123.6</b> (CTAF) <b>①</b>
------------------------	--	--



FAF to MAP 3.2 NM					CATEGORY	A	B	C	D	
Knots	60	90	120	150	180	<b>☑</b> CIRCLING	540-1	502 (600-1)	540-1½ 502 (600-1½)	700-2 662 (700-2)
Min:Sec	3:12	2:08	1:36	1:17	1:04					

AK, 31 OCT 2024 to 26 DEC 2024

AK, 31 OCT 2024 to 26 DEC 2024