

NOME, ALASKA

AL-1231 (FAA)

24081

VOR/DME OME 115.0 Chan 97	APP CRS 276°	Rwy Idg 6009 TDZE 25 Apt Elev 41
---	------------------------	---

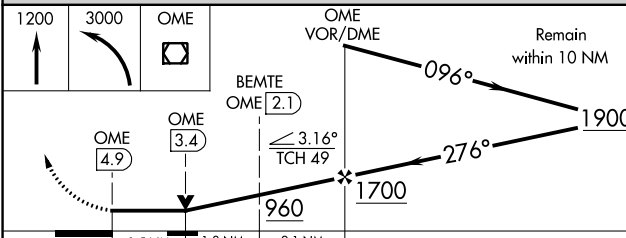
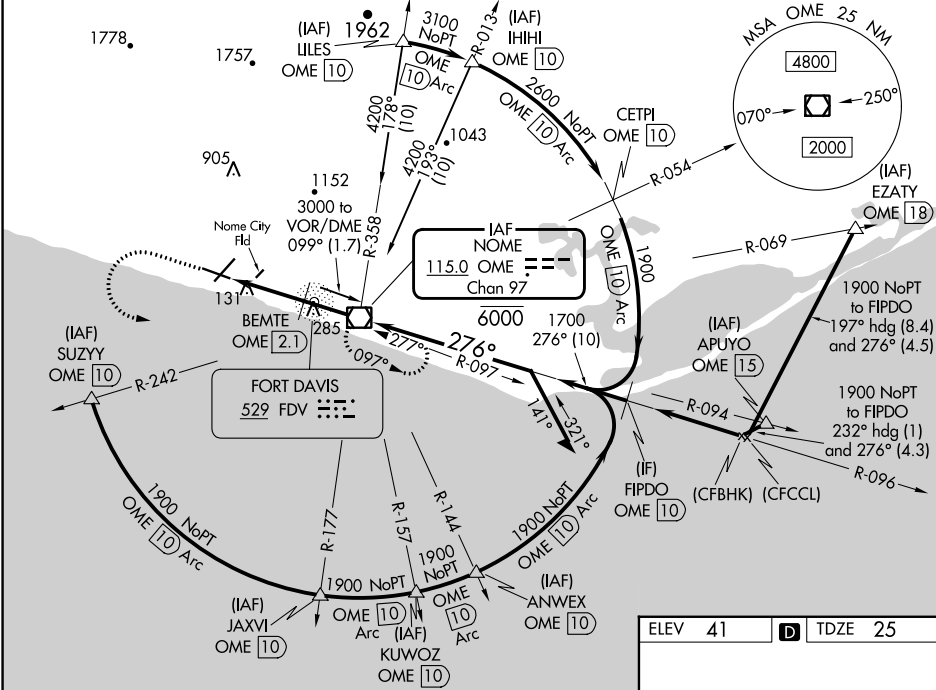
VOR RWY 28
NOME (OME)(PAOM)

⚠ For inop ALS, increase S-28 BEMTE fix minimums Cat A/B visibility to RVR 5000, increase Cat C/D visibility to 1 3/8 SM. Circling NA for Cats C and D north of Rwy 10-28. Circling Rwy 21 NA at night. Rwy 28 helicopter visibility reduction below RVR 4000 NA.

MALSR

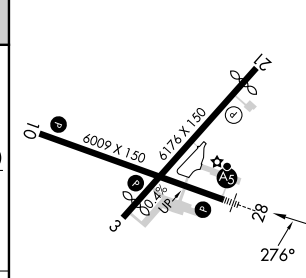
MISSED APPROACH: Climb to 1200 then climbing left turn to 3000 direct OME VOR/DME and hold, continue climb-in-hold to 3000.

AFIS 119.925	ANCHORAGE CENTER 133.3 290.4	NOME RADIO 123.6 (CTAF) 0
-------------------------------	---	--



CATEGORY	A	B	C	D
	S-28	960/40 935 (1000-3/4)	960-2 935 (1000-2)	
C CIRCLING	960-1 1/4 919 (1000-1 1/4)		960-2 3/4 919 (1000-2 3/4)	960-3 919 (1000-3)
BEMTE FIX MINIMUMS				
S-28	540/40 515 (500-3/4)	540/55 515 (500-1)		
C CIRCLING	540-1 499 (500-1)	540-1 1/2 499 (500-1 1/2)	700-2 659 (700-2)	

ELEV 41	D TDZE 25
---------	------------------



	REIL Rwys 3 and 10	1			
	HIRL Rwy 10-28	1			
	MIRL Rwy 3-21	1			
	FAF to MAP 4.9 NM				
Knots	60	90	120	150	180
Min:Sec	4:54	3:16	2:27	1:58	1:38

AK, 31 OCT 2024 to 26 DEC 2024

AK, 31 OCT 2024 to 26 DEC 2024