

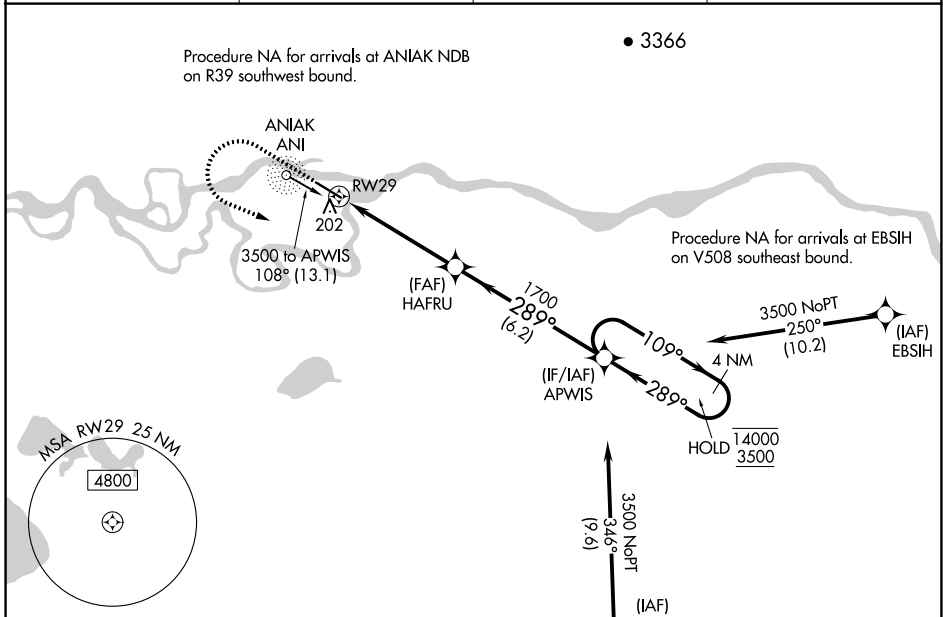
WAAS CH 86538 W29A	APP CRS 289°	Rwy Idg TDZE Apt Elev	5400 97 97
--	------------------------	-----------------------------	---------------------------------------

RNAV (GPS) RWY 29

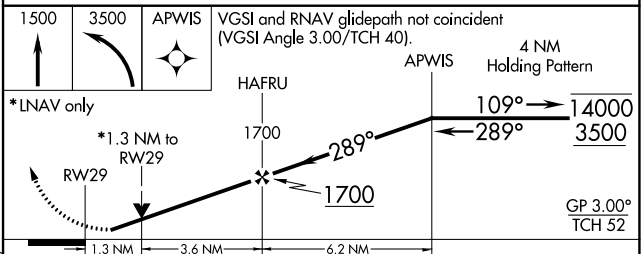
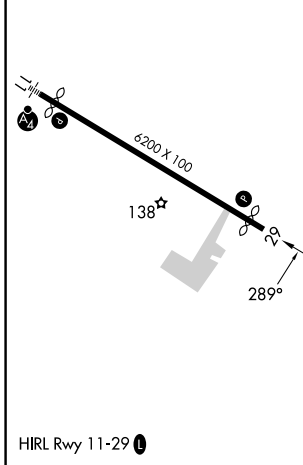
ANIAK (ANI)(PANI)

RNP APCH.	<p>⚠ Circling NA north of Rwy 11-29. Rwy 29 helicopter visibility reduction below 3/4 SM NA. For uncompensated Baro-VNAV systems, LNAV/VNAV NA below -18°C or above 54°C.</p> <p>❄ -37°C</p>	<p>MISSED APPROACH: Climb to 1500 then climbing left turn to 3500 direct APWIS and hold.</p>
-----------	--	--

AWOS-3P 124.3	ANCHORAGE CENTER 118.15 251.05	CLNC DEL 118.15	CTAF 122.1
-------------------------	--	---------------------------	----------------------



ELEV 97	D	TDZE 97
---------	----------	---------



CATEGORY	A	B	C	D
LPV DA	347-1		250 (300-1)	
LNAV/VNAV DA	460-1		363 (400-1)	
LNAV MDA	560-1	463 (500-1)	560-1 3/8	463 (500-1 3/8)
C CIRCLING	560-1 463 (500-1)	620-1 523 (600-1)	860-2 1/4 763 (800-2 1/4)	1200-3 1103 (1200-3)

AK, 31 OCT 2024 to 26 DEC 2024

AK, 31 OCT 2024 to 26 DEC 2024