

COLD BAY, ALASKA

# HI-VOR or TACAN RWY 15

VORTAC CDB <b>112.6</b> Chan <b>73</b>	APCH CRS <b>145°</b>	Rwy Idg <b>10,179</b> TDZE <b>75</b> Arprt Elev <b>100</b>
--	-------------------------	--

AL-1241 [USAF]

COLD BAY (CDB) (PACD)

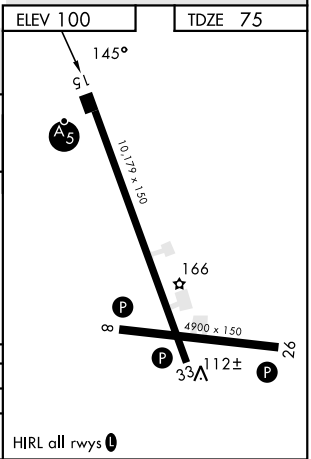
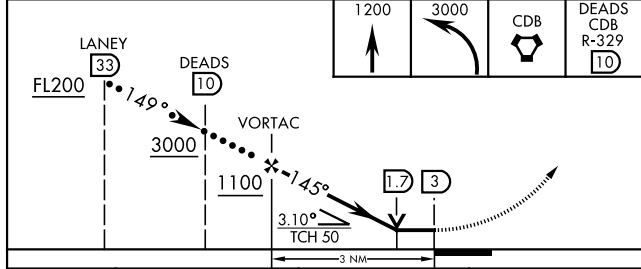
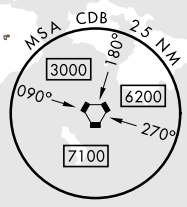
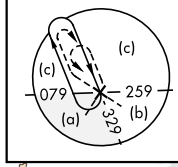
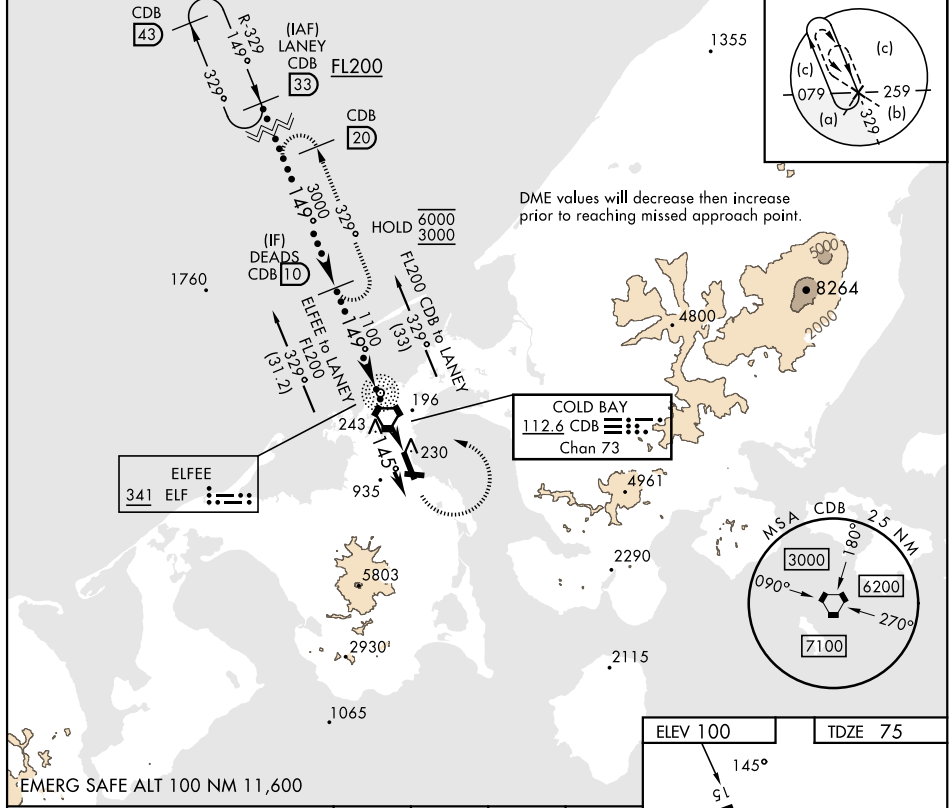
DME required

▼ \* When ALS inop, increase vis to 1 3/8 miles.  
\*\* Circling not authorized SW of Rwy 15-33.



MISSED APPROACH: Climb to 1200, then climbing left turn to 3000 direct CDB VORTAC, then on CDB R-329 to DEADS/CDB 10 DME and hold.

ANCHORAGE CENTER <b>118.5 278.3</b>	COLD BAY RADIO <b>123.6 (CTAF)</b> 0	ASOS <b>135.75</b>
--	---	-----------------------



CATEGORY	C	D	E
S-15*	540/50	465	(500-1)
CIRCLING**	560-1 1/2 460 (500-1 1/2)	860-2 1/2 760 (800-2 1/2)	940-3 840 (900-3)

COLD BAY, ALASKA

55°12'N-162°44'W

COLD BAY (CDB) (PACD)

Amdt 5 02DEC21

# HI-VOR or TACAN RWY 15

AK, 31 OCT 2024 to 26 DEC 2024

AK, 31 OCT 2024 to 26 DEC 2024