

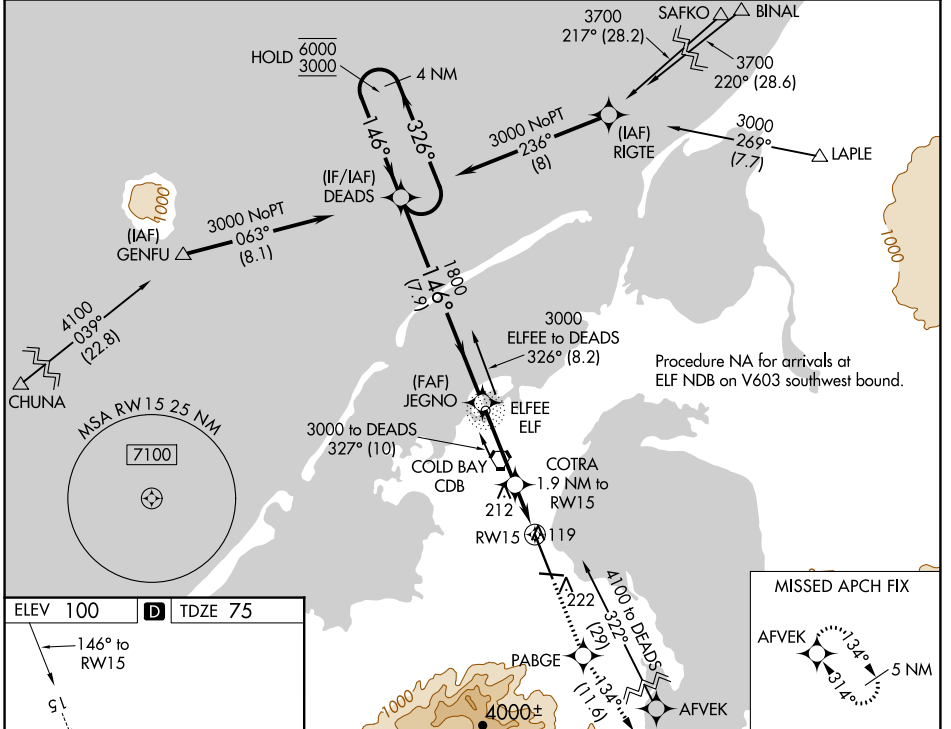
| | | |
|--|------------------------|---|
| WAAS CH 45612 W15A | APP CRS 146° | Rwy Idg 10179 TDZE 75 Apt Elev 100 |
|--|------------------------|---|

RNAV (GPS) RWY 15

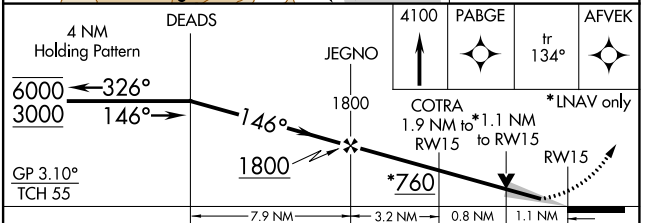
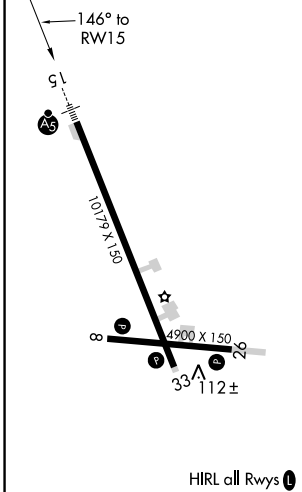
COLD BAY (CDB) (PACD)

| | | |
|---|-------|--|
| RNP APCH. | MALSR | MISSED APPROACH: Climb to 4100 direct PABGE and on track 134° to AFVEK and hold, continue climb-in-hold to 4100. |
| <p>⚠ For uncompensated Baro-VNAV systems, LNAV/VNAV NA below -10°C or above 54°C. Circling NA for Cat A southwest of Rwy 15-33 at night. Circling NA for Cats B/C/D southwest of Rwy 15-33. For inop ALS, increase LNAV/VNAV all Cats visibility to RVR 4000 and LNAV Cat C/D visibility to RVR 6000. #RVR 1800 authorized with use of FD or AP or HUD to DA.</p> | | |

| | | |
|-----------------------|--|---|
| ASOS 135.75 | ANCHORAGE CENTER 118.5 278.3 | COLD BAY RADIO 123.6 (CTAF) 0 |
|-----------------------|--|---|



| | | |
|----------|----------|---------|
| ELEV 100 | D | TDZE 75 |
|----------|----------|---------|



| | | | | |
|--------------|-------------|---------------|-----------------|-----------------|
| CATEGORY | A | B | C | D |
| LPV DA# | | 275/24 | 200 (200-1/2) | |
| LNAV/VNAV DA | | 325/24 | 250 (300-1/2) | |
| LNAV MDA | 480/24 | 405 (400-1/2) | 480/40 | 405 (400-3/4) |
| | 540-1 | 560-1 | 560-1 1/2 | 860-2 1/2 |
| | 440 (500-1) | 460 (500-1) | 460 (500-1 1/2) | 760 (800-2 1/2) |

AK, 31 OCT 2024 to 26 DEC 2024

AK, 31 OCT 2024 to 26 DEC 2024