

WAAS CH 42730 W26A	APP CRS 248°	Rwy Idg TDZE Apt Elev	4900 100 100
--	------------------------	-----------------------------	---

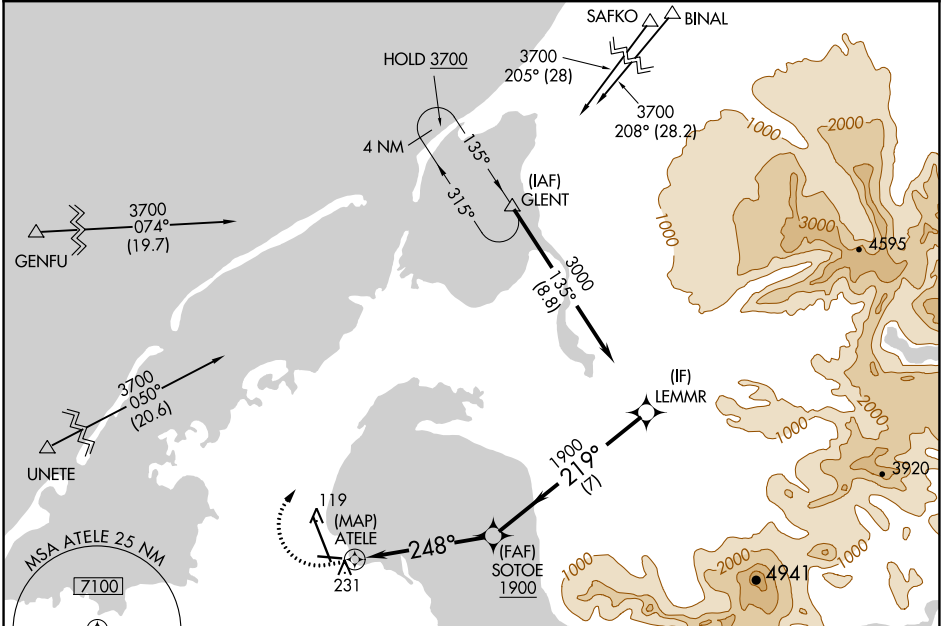
RNAV (GPS) RWY 26

COLD BAY (CDB) (PACD)

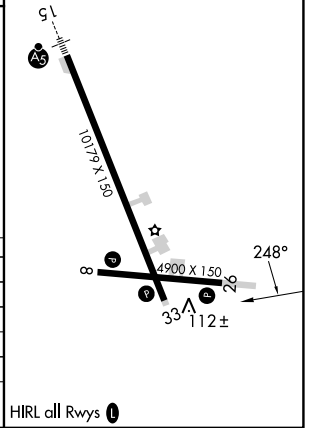
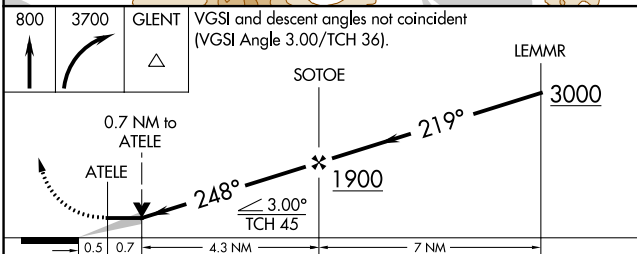
RNP APCH. MISSED APPROACH: Climb to 800 then climbing right turn to 3700 direct GLENT and hold, continue climb-in-hold to 3700. # Missed approach requires a minimum climb of 280 feet per NM to 1180.

▲ Circling NA for Cat B, C, and D southwest of Rwy 15-33.

ASOS 135.75	ANCHORAGE CENTER 118.5 278.3	COLD BAY RADIO 123.6 (CTAF) 1
-----------------------	--	---



ELEV 100	D TDZE 100
----------	-------------------



CATEGORY	A	B	C	D
LP MDA #	500-1	400 (400-1)	500-1 1/8	400 (400-1 1/8)
LP MDA	660-1	560 (600-1)	660-1 5/8	560 (600-1 5/8)
LNAV MDA #	500-1	400 (400-1)	500-1 1/8	400 (400-1 1/8)
LNAV MDA	700-1	600 (600-1)	700-1 3/4	600 (600-1 3/4)
C CIRCLING	700-1	600 (600-1)	700-1 3/4	860-2 1/2
			600 (600-1 3/4)	760 (800-2 1/2)

AK, 31 OCT 2024 to 26 DEC 2024

AK, 31 OCT 2024 to 26 DEC 2024