

WAPAX FOUR DEPARTURE (WAPAX4•WAPAX)

AL-1729 [USAF]

EIELSON AFB (PAEI)

FAIRBANKS, ALASKA

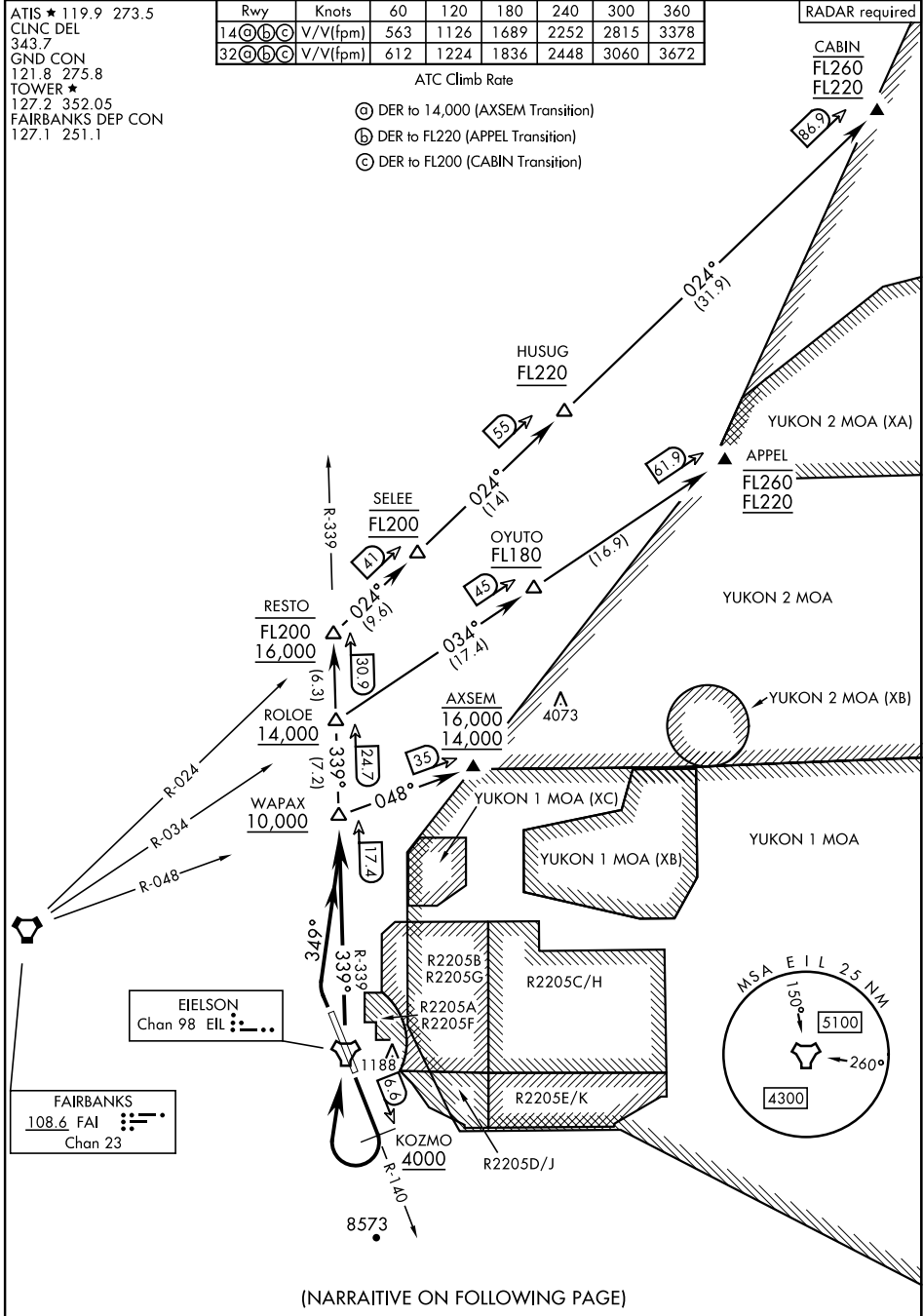
ATIS ★ 119.9 273.5
 CLNC DEL 343.7
 GND CON 121.8 275.8
 TOWER ★ 127.2 352.05
 FAIRBANKS DEP CON 127.1 251.1

| Rwy | Knots | 60 | 120 | 180 | 240 | 300 | 360 |
|----------------|-----------|-----|------|------|------|------|------|
| 14 (C) (B) (C) | V/V (fpm) | 563 | 1126 | 1689 | 2252 | 2815 | 3378 |
| 32 (C) (B) (C) | V/V (fpm) | 612 | 1224 | 1836 | 2448 | 3060 | 3672 |

CABIN
 FL260
 FL220

ATC Climb Rate

- ⊙ DER to 14,000 (AXSEM Transition)
- Ⓟ DER to FL220 (APPEL Transition)
- Ⓞ DER to FL200 (CABIN Transition)



AK, 31 OCT 2024 to 26 DEC 2024

AK, 31 OCT 2024 to 26 DEC 2024

(NARRATIVE ON FOLLOWING PAGE)

WAPAX FOUR DEPARTURE (WAPAX4•WAPAX)

Orig 20APR23

FAIRBANKS, ALASKA

EIELSON AFB (PAEI)