

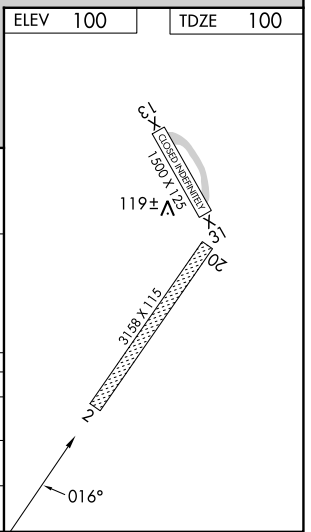
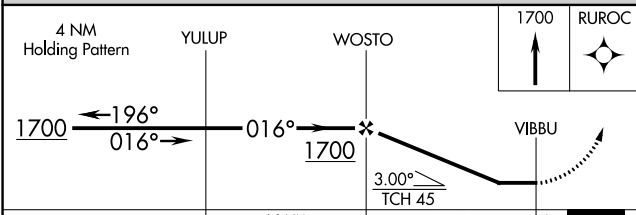
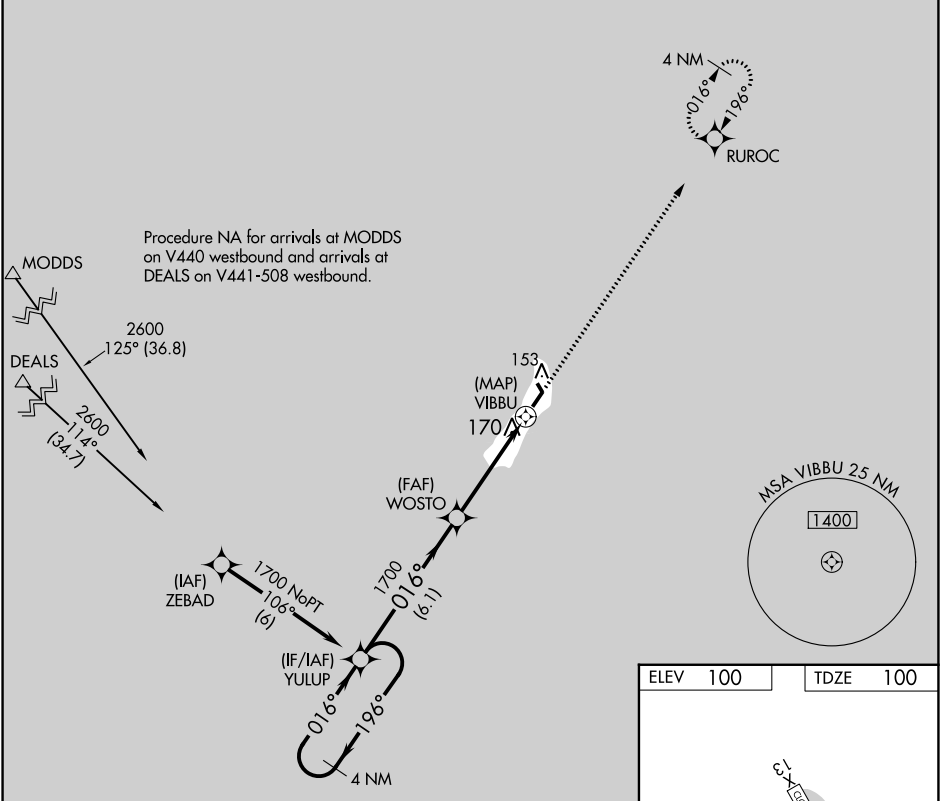
WAAS CH 86427 W02A	APP CRS 016°	Rwy Idg 3158 TDZE 100 Apt Elev 100
--	------------------------	---

RNAV (GPS) RWY 2

MIDDLETON ISLAND (MDO) (P.A.M.D)

▼ DME/DME RNP-0.3 NA Procedure NA at night. Helicopter visibility reduction below 1 SM NA. MISSED APPROACH: Climb to 1700 direct RUROC and hold.

AWOS-3P 135.725	ANCHORAGE CENTER 133.6 269.4	JUNEAU RADIO 122.05	CTAF 122.9
---------------------------	--	-------------------------------	----------------------



CATEGORY	A	B	C	D
LP MDA	560-1	460 (500-1)	560-1 ³ / ₈ 460 (500-1 ³ / ₈)	NA
LNAV MDA	580-1	480 (500-1)	580-1 ³ / ₈ 480 (500-1 ³ / ₈)	NA
CIRCLING	600-1	500 (500-1)	600-1 ¹ / ₂ 500 (500-1 ¹ / ₂)	NA

AK, 31 OCT 2024 to 26 DEC 2024

AK, 31 OCT 2024 to 26 DEC 2024