

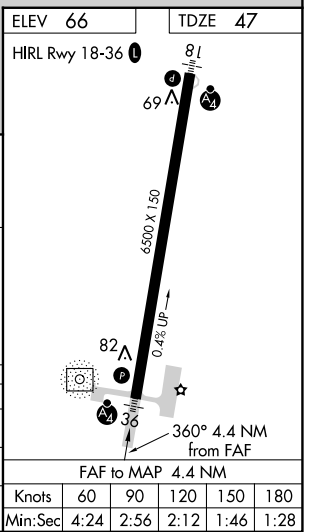
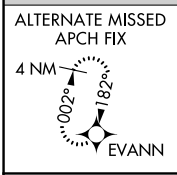
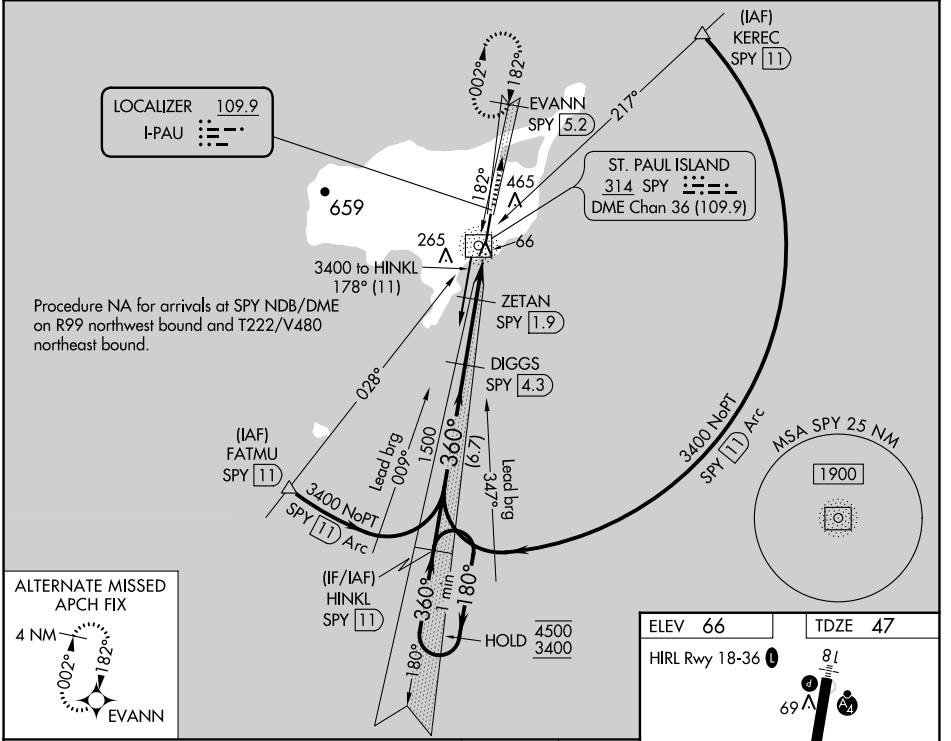
LOC I-PAU 109.9	APP CRS 360°	Rwy ldg TDZE Apt Elev	6500 47 66
---------------------------	------------------------	-----------------------------	---------------------------------------

ILS or LOC RWY 36

ST PAUL ISLAND (SNP)(PASN)

ADF and DME required for procedure entry. DME required.	MALSF	MISSED APPROACH: Climb to 2700 on I-PAU north course (360°) to EVANN/SPY 5.2 DME and hold, continue climb-in-hold to 2700.
<p>V Circling NA west of Rwy 18-36. Inop table does not apply to S-ILS.</p> <p>A When local altimeter setting not received, procedure NA. DME from SPY NDB/DME. Simultaneous reception of I-PAU and SPY DME required.</p>		

ASOS 135.75	ANCHORAGE CENTER 119.1 339.8	CTAF 122.3
-----------------------	--	----------------------



One Minute Holding Pattern	HINKL SPY (11)	DIGGS SPY (4.3)	ZETAN SPY (1.9)	EVANN SPY (5.2)
4500 ← 180°	3400 → 360°	1480	2700 ↑ I-PAU N crs (360°)	
GS 3.00°	360°	1500	*SPY (0.9)	*LOC only
TCH 50	180°	*720	SPY (0.3)	
	6.7 NM	2.4 NM	1 NM	1 NM
CATEGORY	A	B	C	D
S-ILS 36		247-¾	200 (200-¾)	
S-LOC 36		380-¾	333 (400-¾)	
CIRCLING	800-1	734 (800-1)	800-2	800-2¼
			734 (800-2)	734 (800-2¼)

AK, 31 OCT 2024 to 26 DEC 2024

AK, 31 OCT 2024 to 26 DEC 2024