

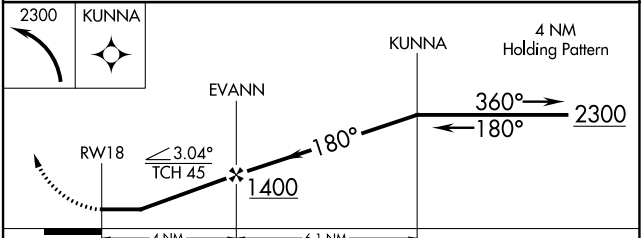
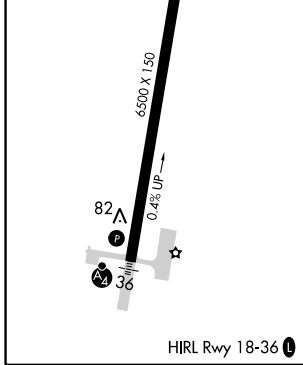
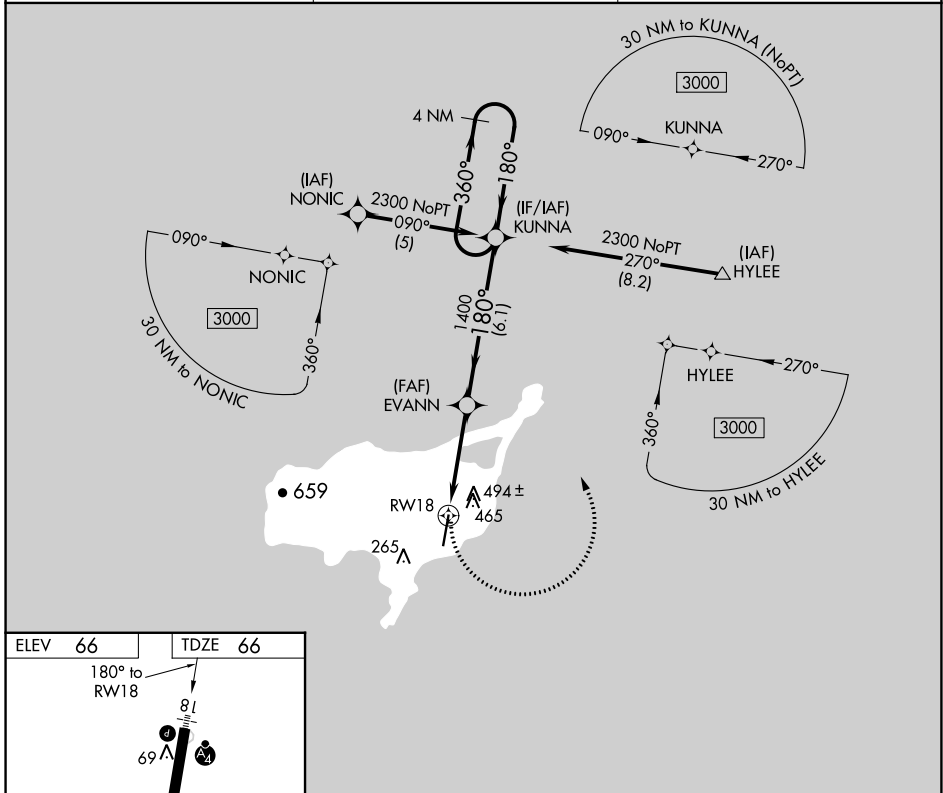
APP CRS	Rwy Idg	<b>6500</b>
<b>180°</b>	TDZE	<b>66</b>
	Apt Elev	<b>66</b>

# RNAV (GPS) RWY 18

ST PAUL ISLAND (SNP) (PASN)

RNP APCH.	MALSF	MISSED APPROACH: Climbing left turn to 2300 direct KUNNA and hold.
<p><b>▼</b> Inoperative table does not apply.</p> <p><b>▲</b> Circling NA west of Rwy 18-36.</p> <p>Rwy 18 helicopter visibility reduction below 1 SM NA.</p>		

ASOS <b>135.75</b>	ANCHORAGE CENTER <b>119.1 339.8</b>	CTAF <b>122.3</b>
-----------------------	--	----------------------



CATEGORY	A	B	C	D
LNAV MDA	740-1	674 (700-1)	740-1¾ 674 (700-1¾)	740-2 674 (700-2)
<input checked="" type="checkbox"/> CIRCLING	800-1	734 (800-1)	800-2 734 (800-2)	800-2¼ 734 (800-2¼)

AK, 31 OCT 2024 to 26 DEC 2024

AK, 31 OCT 2024 to 26 DEC 2024