

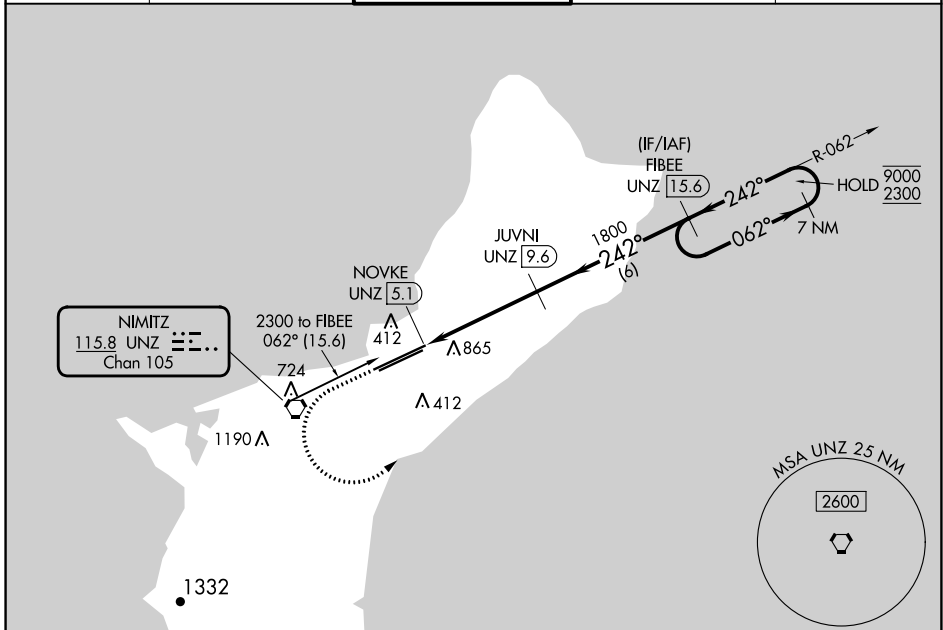
VORTAC UNZ	APP CRS	Rwy Idg	<b>12014</b>
<b>115.8</b>	<b>242°</b>	TDZE	<b>305</b>
Chan <b>105</b>		Apt Elev	<b>305</b>

# VOR or TACAN RWY 24R

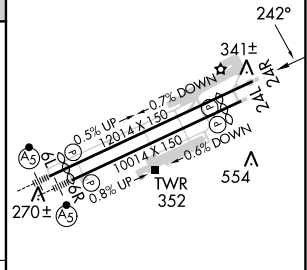
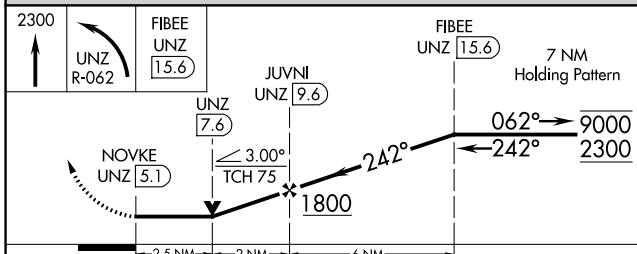
GUAM INTL (GUM)(PGUM)

DME required.		MISSED APPROACH: Climb to 2300 then left turn on UNZ VORTAC R-062 to FIBEE/UNZ 15.6 DME and hold.	
<b>▽</b>	Circling NA southeast of Rwy 6R-24L.	<b>△</b>	Rwy 24R helicopter visibility reduction below ¾ SM NA.

ATIS	GUAM CERAP	AGANA TOWER	GND CON	CLNC DEL
<b>119.0</b>	<b>119.8 269.0</b>	<b>118.1 340.2</b>	<b>121.9 336.4</b>	<b>121.9</b>



ELEV	305	<b>D</b>	TDZE	305
------	-----	----------	------	-----



CATEGORY	A	B	C	D
S-24R	1180-1 875 (900-1)	1180-1¼ 875 (900-1¼)	1180-2½	875 (900-2½)
<b>C</b> CIRCLING	1180-1¼	875 (900-1¼)	1180-2½ 875 (900-2½)	NA

HIRL all Rwys

PAC, 31 OCT 2024 to 26 DEC 2024

PAC, 31 OCT 2024 to 26 DEC 2024