

YIGO, GUAM I, GUAM

# ILS Z or LOC/DME Z RWY 24L

LOC I-PMY <b>110.1</b>	APCH CRS <b>244°</b>	Rwy Ildg <b>11,200</b> TDZE <b>607</b> Arprt Elev <b>617</b>
---------------------------	-------------------------	---

AL-2147 [USAF]

ANDERSEN AFB (PGUA)

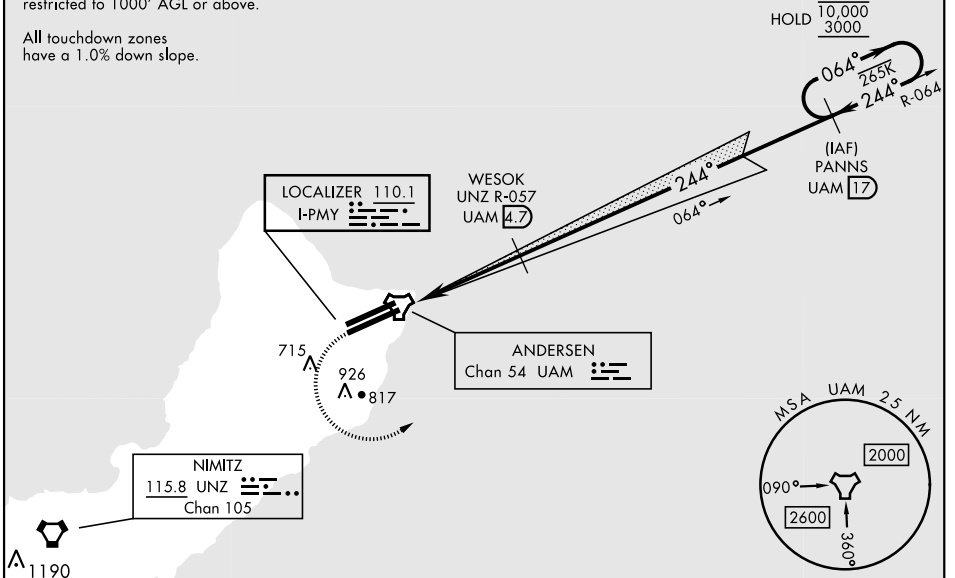
<p>▼ *When ALS inop, increase RVR to 45, vis to 1/8 mile. **When ALS inop, increase CAT AB RVR to 55, vis to 1 mile; CAT CDE RVR to 50, vis to 1 mile. *** Circling not authorized NW of Rwy 06L-24R.</p>	<p>SALS <b>(A2)</b></p>	<p>MISSED APPROACH: Climb to 1200, then climbing left turn to 3000 to intercept UAM R-064 direct PANNS and hold.</p>
---	-----------------------------	--

ATIS <b>118.175 254.325</b>	GUAM APP CON <b>119.8 269.0</b>	TOWER <b>126.2 233.7</b>	GND CON <b>121.7 275.8</b>	CLNC DEL <b>126.725 256.7</b>
--------------------------------	------------------------------------	-----------------------------	-------------------------------	----------------------------------

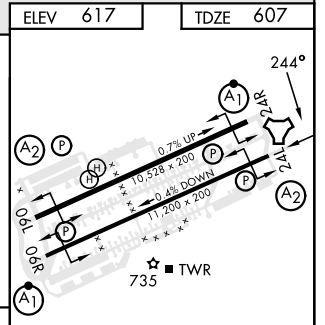
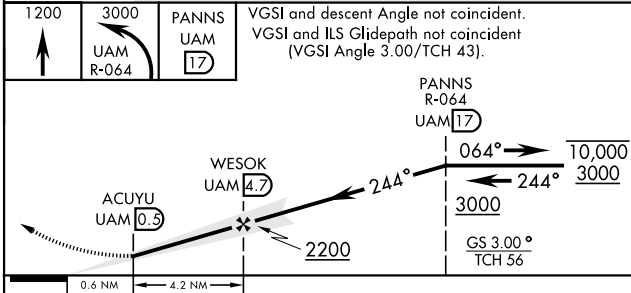
CAUTION: GS unusable below 900' MSL/300' AGL due to runway supervisory unit.

CAUTION: Environmentally Sensitive Area  
Flights along Andersen cliffline restricted to 1000' AGL or above.

All touchdown zones have a 1.0% down slope.



EMERG SAFE ALT 100 NM 2900



CATEGORY	A	B	C	D	E
S-ILS 24L*	900/40		293	(300-3/4)	
S-LOC 24L**	940/40	333 (400-3/4)	940/45	333 (400-7/8)	
*** CIRCLING	1060-1	1080-1	1240-1 3/4	1240-2	1240-2 1/4
	443 (500-1)	463 (500-1)	623 (700-1 3/4)	623 (700-2)	623 (700-2 1/4)

ELEV	617	TDZE	607
------	-----	------	-----

YIGO, GUAM I, GUAM

13° 35' N-144° 56' E

ANDERSEN AFB (PGUA)

Orig 12AUG21  
TERPS

# ILS Z or LOC/DME Z RWY 24L

PAC, 31 OCT 2024 to 26 DEC 2024

PAC, 31 OCT 2024 to 26 DEC 2024