

YIGO, GUAM I, GUAM

ILS Z or LOC/DME Z RWY 24R

LOC I-YIG 109.3	APCH CRS 244°	Rwy ldg 10,528 TDZE 617 Arprt Elev 617
---------------------------	-------------------------	---

AL-2147 [USAF]

ANDERSEN AFB (PGUA)

▼ * When ALS inop, increase RVR to 40, vis to ¾ mile.
 ** When ALS inop, increase RVR to 55, vis to 1 mile.
 *** Circling not authorized NW of Rwy 06L-24R.



MISSED APPROACH: Climb to 1100, then climbing left turn to 3000 to intercept UAM R-063 direct FABED and hold.

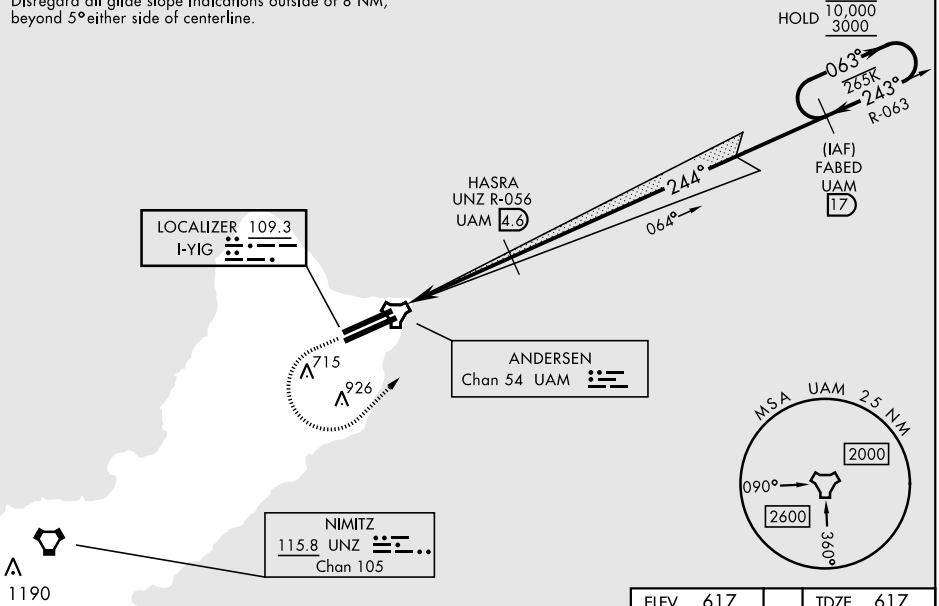
ATIS 118.175 254.325	GUAM APP CON 119.8 269.0	TOWER 126.2 233.7	GND CON 121.7 275.8	CLNC DEL 126.725 256.7
--------------------------------	------------------------------------	-----------------------------	-------------------------------	----------------------------------

CAUTION: Environmentally Sensitive Area
 Flights along Andersen cliffline
 restricted to 1000' AGL or above.

All touchdown zones
 have a 1.0% down slope.

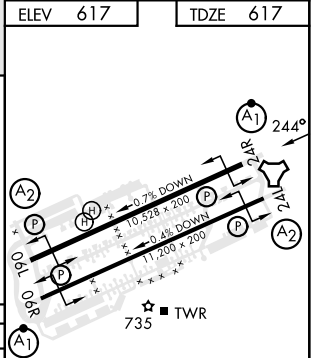
Disregard all glide slope indications outside of 8 NM,
 beyond 5° either side of centerline.

PAC, 31 OCT 2024 to 26 DEC 2024



PAC, 31 OCT 2024 to 26 DEC 2024

	ELEV 617	TDZE 617			
EMERG SAFE ALT 100 NM 2900					
1100 ↑ UAM R-063	3000 UAM R-063	FABED UAM 17			
INIME UAM 0.5 HASRA UAM 4.6 2200 244° 243° 10,000 3000 GS 3.00° TCH 56		FABED R-063 UAM 17			
0.7 NM 4.1 NM 10.8 NM 061° 063° 244° 243° 244°					
CATEGORY	A	B	C	D	E
S-ILS 24R*	817/24 200 (200-½)				
S-LOC 24R**	940/24	323 (400-½)	940/26	323 (400-½)	
CIRCLING ***	1060-1	1080-1	1240-1¾	1240-2	1240-2¼
	443 (500-1)	463 (500-1)	623 (700-1¾)	623 (700-2)	623 (700-2¼)
HIRL all rwys					



YIGO, GUAM I, GUAM

13° 35'N-144° 56'E

ANDERSEN AFB (PGUA)

Orig 12AUG21
TERPS

ILS Z or LOC/DME Z RWY 24R