

YIGO, GUAM I, GUAM

RNAV (GPS) RWY 06L

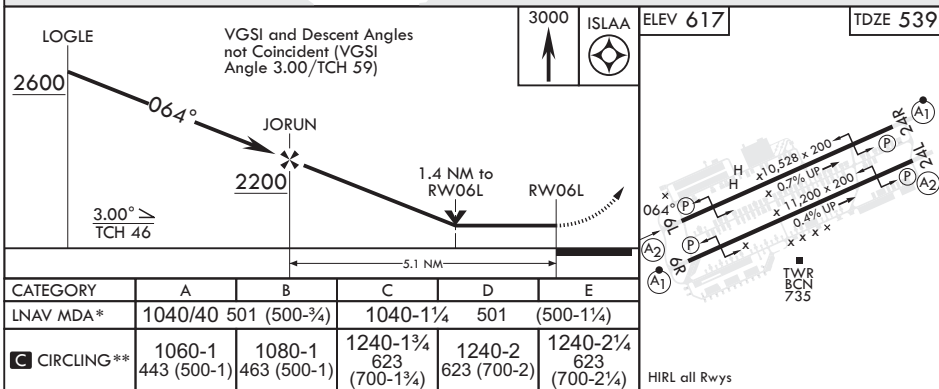
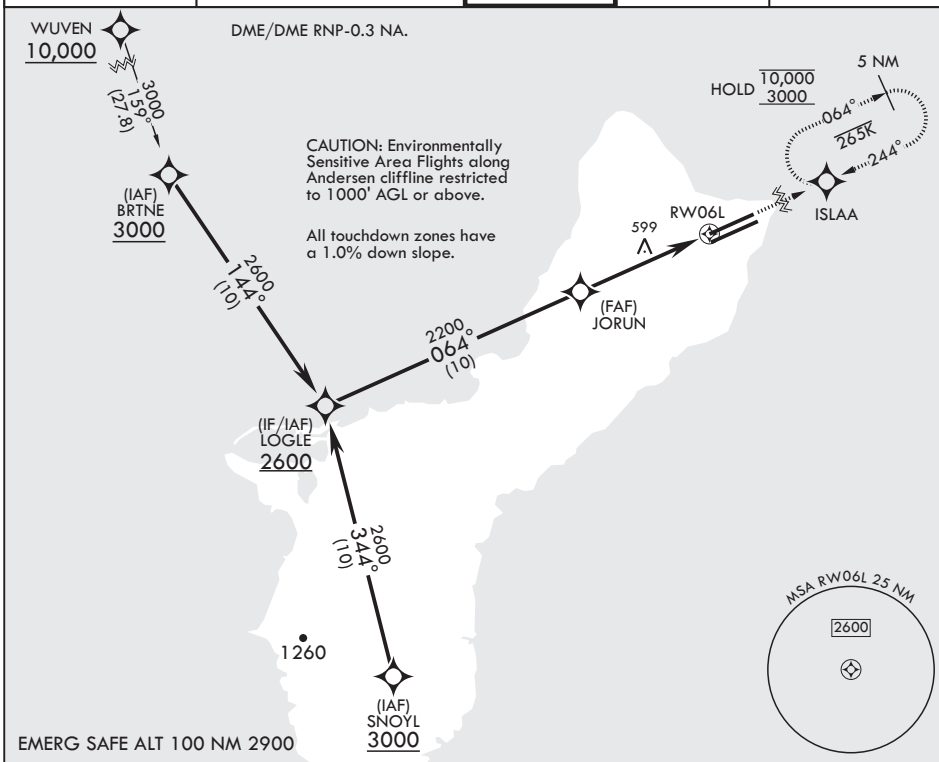
APCH CRS 064°	Rwy Idg TDZE Arprt Elev	10,528 539 617
-------------------------	-------------------------------	---

(USAF)

ANDERSEN AFB (PGUA)

RNP APCH	SALS	MISSED APPROACH: Climb to 3000 direct ISLAA and hold.
<p>▼ * When ALS inop increase CAT AB RVR to 55, vis to 1 mile; CAT CDE vis to 1 3/8 miles. ** Circling not authorized NW of Rwy 06L-24R. Circling not authorized to Rwys 06L and 24R.</p>		

ATIS 118.175 254.325	GUAM APP CON/DEP CON 119.8 269.0	TOWER 126.2 233.7	GND CON 121.7 275.8	CLNC DEL 126.725 256.7
--------------------------------	--	-----------------------------	-------------------------------	----------------------------------



YIGO, GUAM I, GUAM

13°35'N - 144°56'E

ANDERSEN AFB (PGUA)

Amdt 1 17JUN21
TERPS

RNAV (GPS) RWY 06L

PAC, 31 OCT 2024 to 26 DEC 2024

PAC, 31 OCT 2024 to 26 DEC 2024