

YIGO, GUAM I, GUAM

RNAV (GPS) RWY 06R

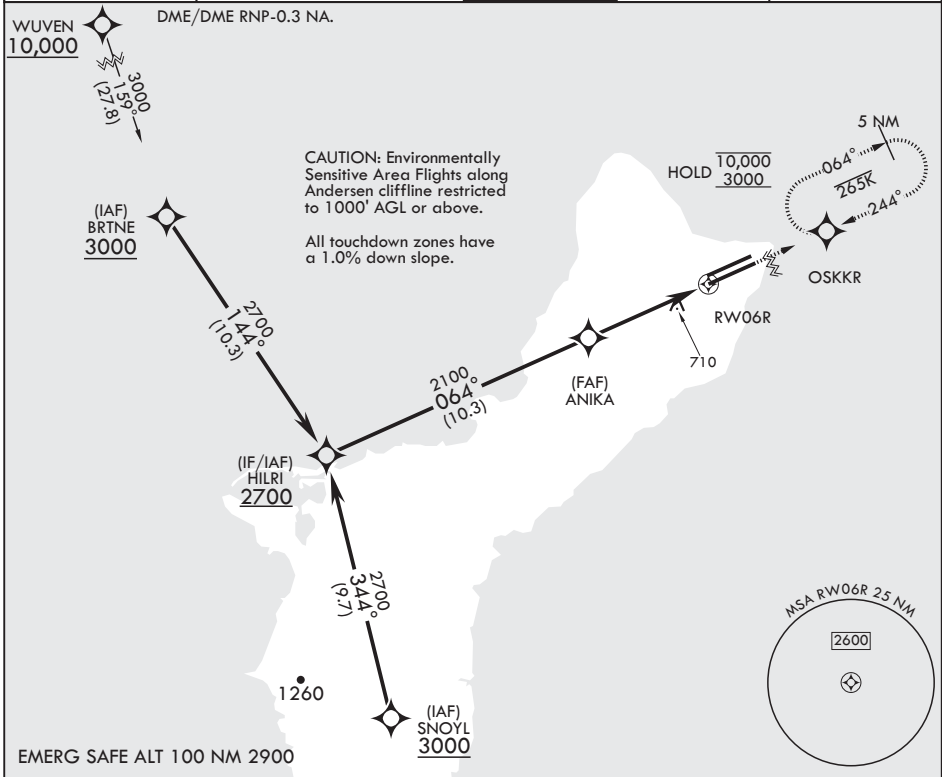
APCH CRS	Rwy Idg	11,200
064°	TDZE	557
	Arprt Elev	617

- (USAF)

ANDERSEN AFB (PGUA)

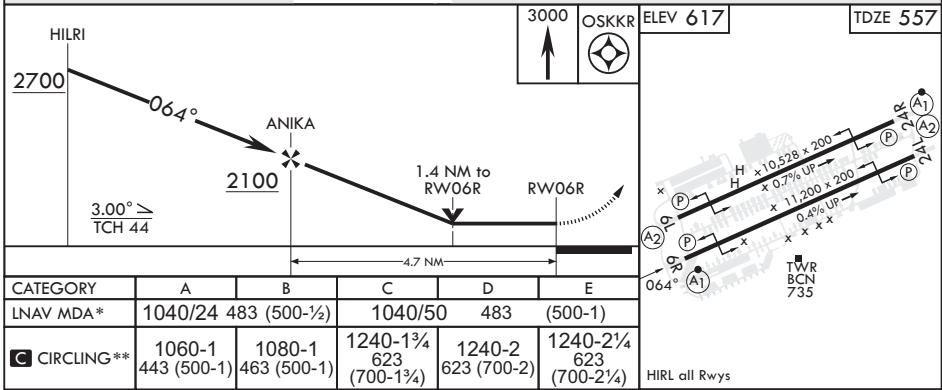
RNP APCH	ALSF-1	MISSED APPROACH: Climb to 3000 direct OSKKR and hold.
<p>▼ * When ALS inop, increase CAT AB RVR to 55, vis to 1 mile; CAT CDE vis to 1 3/8 miles. ** Circling not authorized NW of Rwy 6L-24R.</p>		

ATIS	GUAM APP CON/DEP CON	TOWER	GND CON	CLNC DEL
118.175 254.325	119.8 269.0	126.2 233.7	121.7 275.8	126.725 256.7



PAC, 31 OCT 2024 to 26 DEC 2024

PAC, 31 OCT 2024 to 26 DEC 2024



CATEGORY	A	B	C	D	E
LNAY MDA*	1040/24 483 (500-½)		1040/50 483		(500-1)
CIRCLING**	1060-1 443 (500-1)	1080-1 463 (500-1)	1240-1¾ 623 (700-1¾)	1240-2 623 (700-2)	1240-2¼ 623 (700-2¼)

HILRI all Rwys

YIGO, GUAM I, GUAM

13°35'N - 144°56'E

ANDERSEN AFB (PGUA)

Amdt 1 17JUN21
TERPS

RNAV (GPS) RWY 06R