

YIGO, GUAM I, GUAM

# TACAN Y RWY 24L

VORTAC UNZ <b>115.8</b> Chan <b>T05</b>	APCH CRS <b>236°</b>	Rwy ldg TDZE Arprt Elev	<b>11,200</b> <b>607</b> <b>617</b>
---	-------------------------	-------------------------------	---

- (USAF)

ANDERSEN AFB (PGUA)

**⚠** \* When ALS inop increase CAT AB RVR to 55, vis to 1 mile; CAT CDE RVR to 50, vis to 1 mile.  
\*\* Circling not authorized NW of Rwy 06L-24R.

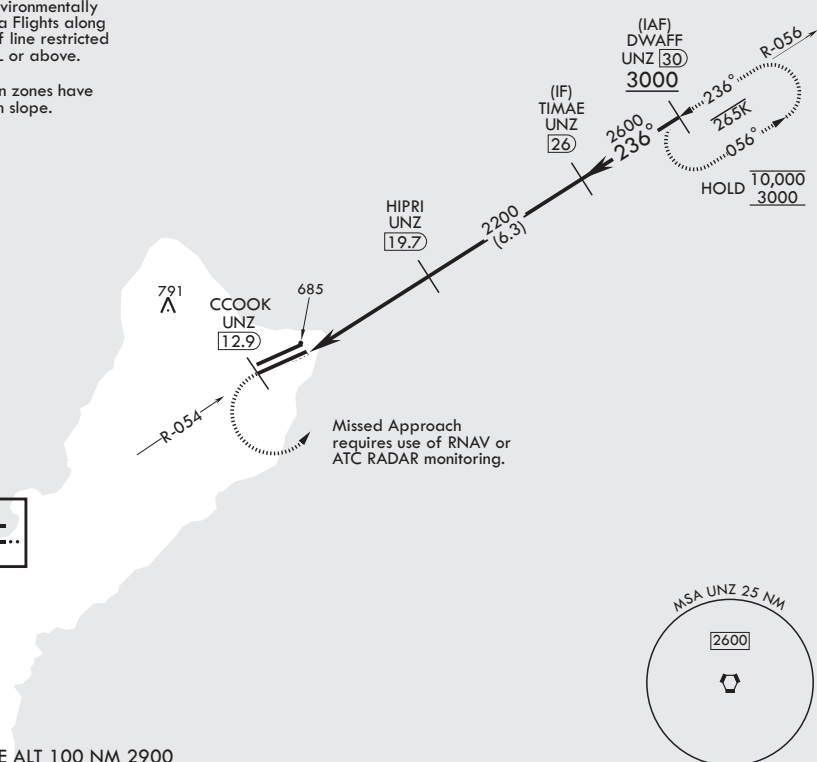


**MISSED APPROACH:** Climb to 3000 direct CCOOK, then climbing left turn to intercept UNZ R-056 and hold.

ATIS <b>118.175 254.325</b>	GUAM APP CON/DEP CON <b>119.8 269.0</b>	TOWER <b>126.2 233.7</b>	GND CON <b>121.7 275.8</b>	CLNC DEL <b>126.725 256.7</b>
--------------------------------	--	-----------------------------	-------------------------------	----------------------------------

**CAUTION:** Environmentally Sensitive Area Flights along Andersen cliff line restricted to 1000' AGL or above.

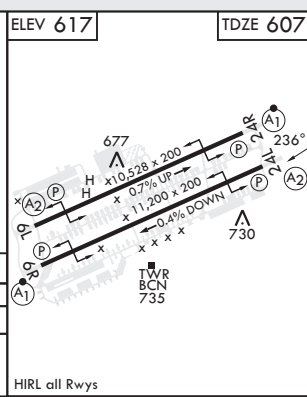
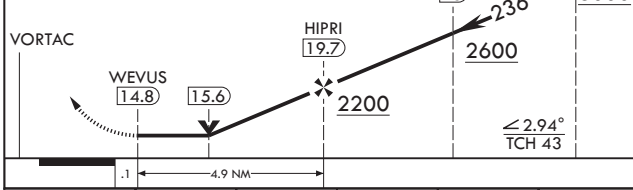
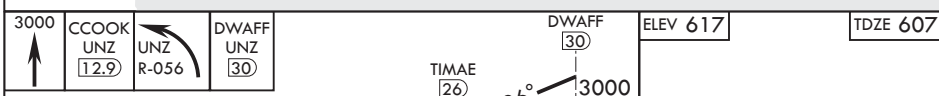
All touchdown zones have a 1.0% down slope.



NIMITZ <b>115.8 UNZ</b> Chan <b>T05</b>
---

1074

EMERG SAFE ALT 100 NM 2900



CATEGORY	A	B	C	D	E
S-24L*	940/40 333 (400-¾)		940/45 333 (400-¾)		
<b>C</b> CIRCLING**	1060-1 443 (500-1)	1080-1 463 (500-1)	1240-1¾ 623 (700-1¾)	1240-2 623 (700-2)	1240-2¼ 623 (700-2¼)

HIRL all Rwys

YIGO, GUAM I, GUAM

13°35'N - 144°56'E

ANDERSEN AFB (PGUA)

Amdt 2 17JUN21  
TERPS

# TACAN Y RWY 24L

PAC, 31 OCT 2024 to 26 DEC 2024

PAC, 31 OCT 2024 to 26 DEC 2024