

YIGO, GUAM I, GUAM

# TACAN Y RWY 24R

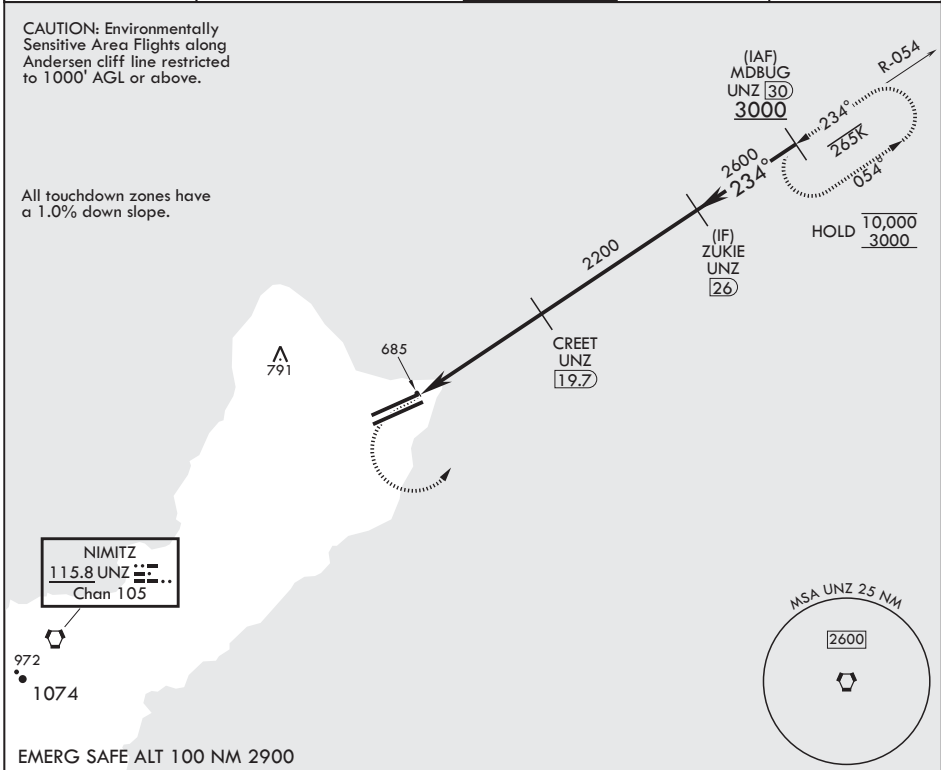
VORTAC UNZ <b>115.8</b> Chan <b>T05</b>	APCH CRS <b>234°</b>	Rwy ldg <b>10,528</b> TDZE <b>617</b> Arprt Elev <b>617</b>
---	-------------------------	---

- (USAF)

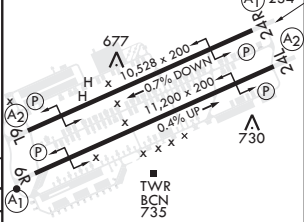
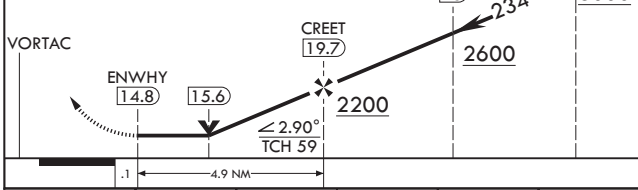
ANDERSEN AFB (PGUA)

RNAV or RADAR required for missed approach	ALSF-1	MISSED APPROACH: Climb to 1100, then climbing left turn to intercept UNZ R-054 to MDBUG and hold.
<p><b>▼</b> * When ALS inop increase CAT AB RVR to 55, vis to 1 mile; CAT CDE RVR to 50, vis to 1 mile.</p> <p>** Circling not authorized NW of Rwy 06L-24R.</p>		

ATIS <b>118.175 254.325</b>	GUAM APP CON/DEP CON <b>119.8 269.0</b>	TOWER <b>126.2 233.7</b>	GND CON <b>121.7 275.8</b>	CLNC DEL <b>126.725 256.7</b>
--------------------------------	--	-----------------------------	-------------------------------	----------------------------------



1100	3000	MDBUG <b>30</b>	ELEV <b>617</b>	TDZE <b>617</b>



CATEGORY	A	B	C	D	E
S-24R*	940/24 323 (400-½)		940/40 323 (400-¾)		
<b>C</b> CIRCLING**	1060-1 443 (500-1)	1080-1 463 (500-1)	1240-1¾ 623 (700-1¾)	1240-2 623 (700-2)	1240-2¼ 623 (700-2¼)

HIRL all Rwys

YIGO, GUAM I, GUAM

13°35'N - 144°56'E

ANDERSEN AFB (PGUA)

Amdt 3 10AUG23  
TERPS

# TACAN Y RWY 24R

PAC, 31 OCT 2024 to 26 DEC 2024

PAC, 31 OCT 2024 to 26 DEC 2024