

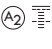
YIGO, GUAM I, GUAM

# TACAN Y RWY 06L

VORTAC UNZ <b>115.8</b> Chan <b>T05</b>	APCH CRS <b>053°</b>	Rwy ldg TDZE <b>539</b> Arprt Elev <b>617</b>
---	-------------------------	---

- (USAF)

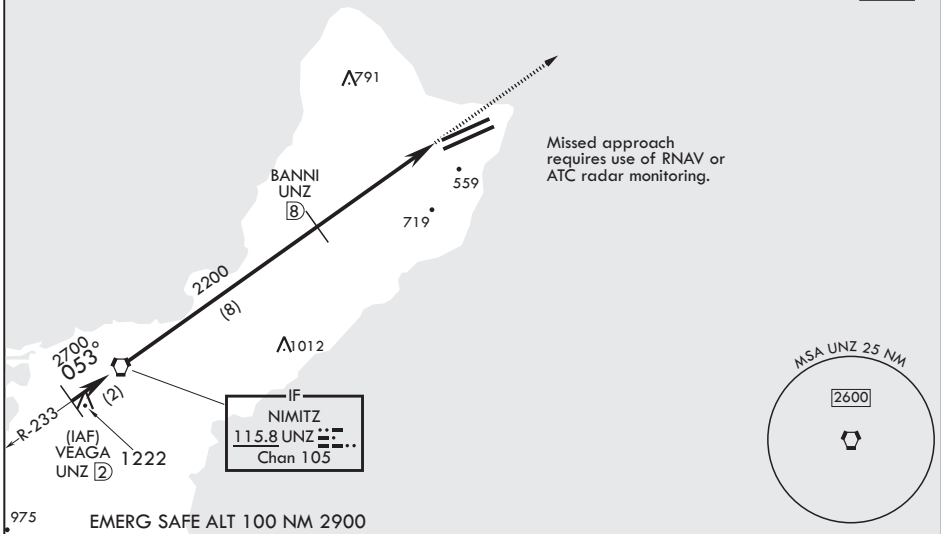
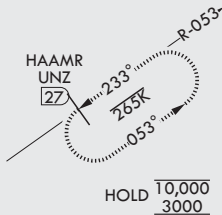
ANDERSEN AFB (PGUA)

RADAR or DME required	SALS 	MISSED APPROACH: Climb to 3000, intercept UNZ R-053 to HAAMR and hold.
<p>▼ * When ALS inop, increase CAT AB RVR to 55 and vis to 1 mile, CAT CDE vis to 1 1/2 miles. ** Circling not authorized NW of Rwy 06L-24R.</p>		

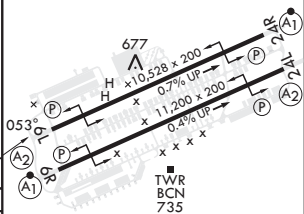
ATIS <b>118.175 254.325</b>	GUAM APP CON/DEP CON <b>119.8 269.0</b>	TOWER <b>126.2 233.7</b>	GND CON <b>121.7 275.8</b>	CLNC DEL <b>126.725 256.7</b>
--------------------------------	--	-----------------------------	-------------------------------	----------------------------------

CAUTION: Environmentally Sensitive Area Flights along Anderson cliff line restricted to 1000' AGL or above.

All touchdown zones have a 1.0% down slope.



VEAGA UNZ 2	VORTAC	BANNI UNZ 8	FAYZR UNZ 12.8	HAAMR UNZ 27	ELEV 617	TDZE 539
2700	2700	2200	11.6			
053°		2.99° TCH 59		4.8 NM		
CATEGORY	A	B	C	D	E	
S-6L*	1060/40 521 (500-¾)		1060-1¼ 521 (500-1¼)			
CIRCLING**	1060-1 443 (500-1)	1080-1 463 (500-1)	1240-1¾ 623 (700-1¾)	1240-2 623 (700-2)	1240-2¼ 623 (700-2¼)	HIRL all Rwys



YIGO, GUAM I, GUAM

13°35'N - 144°56'E

ANDERSEN AFB (PGUA)

Amdt 3 10AUG23  
TERPS

# TACAN Y RWY 06L

PAC, 31 OCT 2024 to 26 DEC 2024

PAC, 31 OCT 2024 to 26 DEC 2024