

YIGO, GUAM I, GUAM

TACAN Y RWY 06R

VORTAC UNZ 115.8 Chan T05	APCH CRS 054°	Rwy ldg TDZE 11,200 557	Arprt Elev 617
---	-------------------------	---	--------------------------

-(USAF)

ANDERSEN AFB (PGUA)

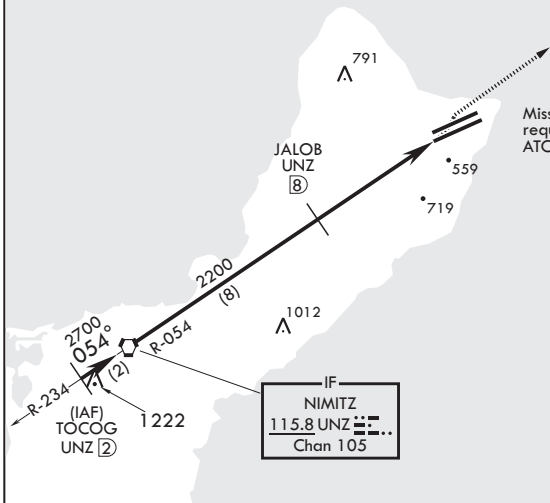
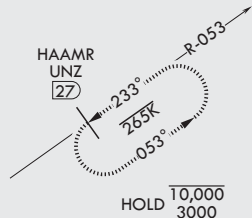
▼ * When ALS inop, increase CAT AB RVR to 55, vis to 1 mile, CAT CDE vis to 1 3/8 miles.
** Circling not authorized NW of Rwy 6L-24R.

ALSF-1 MISSED APPROACH: Climb to 3000, intercept UNZ R-053 to HAAMR and hold.

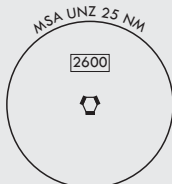
ATIS 118.175 254.325	GUAM APP CON/DEP CON 119.8 269.0	TOWER 126.2 233.7	GND CON 121.7 275.8	CLNC DEL 126.725 256.7
--------------------------------	--	-----------------------------	-------------------------------	----------------------------------

CAUTION: Environmentally Sensitive Area Flights along Anderson cliff line restricted to 1000' AGL or above.

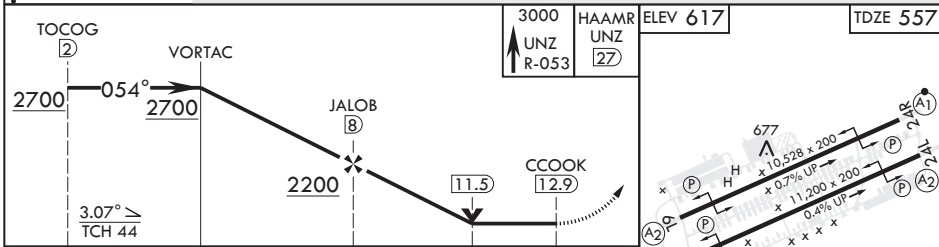
All touchdown zones have a 1.0% down slope.



Missed approach requires use of RNAV or ATC radar monitoring.



1172 EMERG SAFE ALT 100 NM 2900



CATEGORY	A	B	C	D	E
S-6R*	1060/24	503 (500-½)	1060/55	503	(500-1)
☐ CIRCLING**	1060-1 443 (500-1)	1080-1 463 (500-1)	1240-1¾ 623 (700-1¾)	1240-2 623 (700-2)	1240-2¼ 623 (700-2¼)

HIRL all Rwys

YIGO, GUAM I, GUAM

13°35'N - 144°56'E

ANDERSEN AFB (PGUA)

Amdt 2 17JUN21
TERPS

TACAN Y RWY 06R

PAC, 31 OCT 2024 to 26 DEC 2024

PAC, 31 OCT 2024 to 26 DEC 2024