

WAKE ISLAND, WAKE ISLAND

# RNAV (GPS) RWY 10

APCH CRS **096°**  
 Rwy Idg **9844**  
 TDZE **23**  
 Arpt Elev **23**

- (USAF)

WAKE ISLAND AFLD (PWAJ)

RNP APCH-GPS

MISSED APPROACH: Climbing to 4000 direct NONEY and hold. Continue climb-in-hold to 4000.

✚ \* Circling not authorized N of Rwy 10-28.

WAKE OPS  
**128.0 349.4**

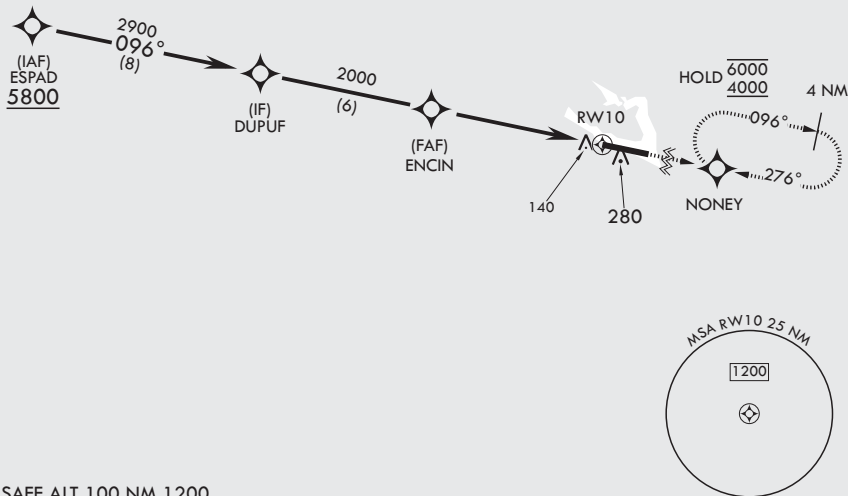
CAUTION: Procedure in uncontrolled airspace. Uncontrolled airspace below 5500' AGL.

Contact Wake Island Operations for advisory services.

CAUTION: When circling to Rwy 28 at night, operational VGSI required, remain on or above VGSI glidepath until threshold.

When VGSI inop, procedure not authorized at night.

USAF only: when VGSI inop, straight-in Rwy 10 authorized at night with MAJCOM A3 approval.



EMERG SAFE ALT 100 NM 1200

<p>DUFUF</p> <p>2900</p> <p>096°</p> <p>ENCIN</p> <p>2000</p> <p>3.01° ≥ TCH 60</p>	<p>VGSI and descent angles not coincident (VGSI angle 3.00/TCH 76).</p> <p>TA 5500</p> <p>4000</p> <p>NONEY</p> <p>ELEV 23</p> <p>TDZE 23</p>																			
<table border="1" style="width:100%; border-collapse: collapse;"> <thead> <tr> <th>CATEGORY</th> <th>A</th> <th>B</th> <th>C</th> <th>D</th> <th>E</th> </tr> </thead> <tbody> <tr> <td>LNAV MDA</td> <td>460-1</td> <td>437 (500-1)</td> <td>460-1¼</td> <td>437</td> <td>(500-1¼)</td> </tr> <tr> <td><b>C</b> CIRCLING*</td> <td>460-1 437 (500-1)</td> <td>480-1 457 (500-1)</td> <td>480-1½ 457 (500-1½)</td> <td>580-2</td> <td>557 (600-2)</td> </tr> </tbody> </table>			CATEGORY	A	B	C	D	E	LNAV MDA	460-1	437 (500-1)	460-1¼	437	(500-1¼)	<b>C</b> CIRCLING*	460-1 437 (500-1)	480-1 457 (500-1)	480-1½ 457 (500-1½)	580-2	557 (600-2)
CATEGORY	A	B	C	D	E															
LNAV MDA	460-1	437 (500-1)	460-1¼	437	(500-1¼)															
<b>C</b> CIRCLING*	460-1 437 (500-1)	480-1 457 (500-1)	480-1½ 457 (500-1½)	580-2	557 (600-2)															

WAKE ISLAND, WAKE ISLAND

19°17'N - 166°38'E

WAKE ISLAND AFLD (PWAJ)

Amdt 3 18APR24  
 TERPS

# RNAV (GPS) RWY 10

PAC, 31 OCT 2024 to 26 DEC 2024

PAC, 31 OCT 2024 to 26 DEC 2024