

WAKE ISLAND, WAKE ISLAND

RNAV (GPS) RWY 28

APCH CRS 276°
 Rwy Idg 9844
 TDZE 20
 Arpt Elev 23

-(USAF)

WAKE ISLAND AFLD (PWAQ)

RNP APCH-GPS

MISSED APPROACH: Climbing to 4000 direct DUPUF and hold. Continue climb-in-hold to 4000.

* Circling not authorized N of Rwy 10-28.

WAKE OPS
 128.0 349.4

CAUTION: Procedure in uncontrolled airspace. Uncontrolled airspace below 5500' AGL.

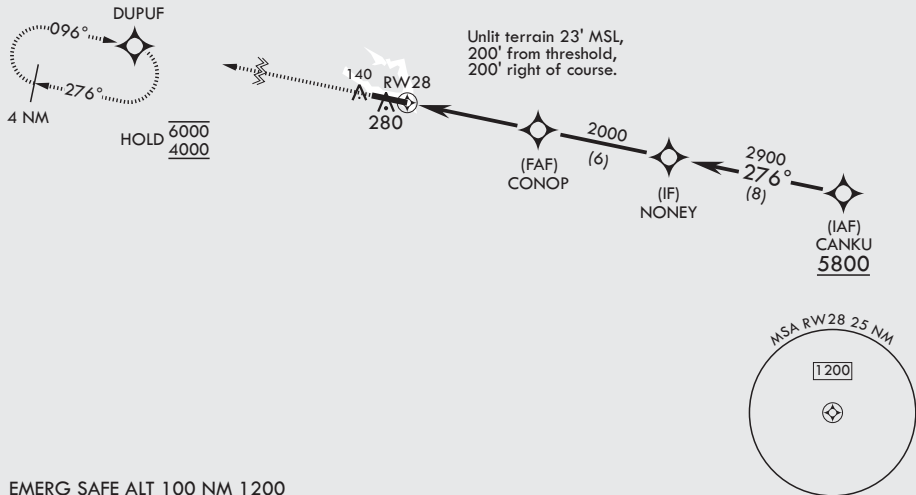
Contact Wake Island Operations for advisory services.

CAUTION: When Rwy 10 VGSI inop, circling to Rwy 10 not authorized at night.

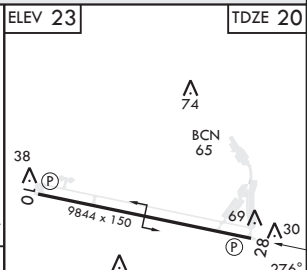
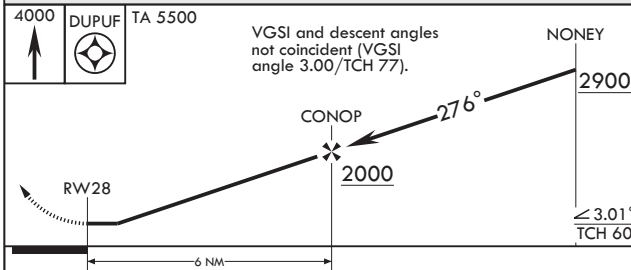
RWY 28 helicopter visibility reduction below 1 SM not authorized.

Straight-in Rwy 28 at night, operational VGSI required, remain on or above VGSI glidepath until threshold

USAF Only: When VGSI Inop, Straight-in Rwy 28 authorized at night with aircrew command approval.



EMERG SAFE ALT 100 NM 1200



CATEGORY	A	B	C	D	E
LNAV MDA	460-1	440 (500-1)	460-1½	440	(500-1½)
C CIRCLING*	460-1 437 (500-1)	480-1 457 (500-1)	480-1½ 457 (500-1½)	580-2	557 (600-2)

ELEV 23	TDZE 20
HIREL all Rwys REIL all Rwys	

WAKE ISLAND, WAKE ISLAND

19°17'N - 166°38'E

WAKE ISLAND AFLD (PWAQ)

Amdt 3 18APR24
 TERPS

RNAV (GPS) RWY 28

PAC, 31 OCT 2024 to 26 DEC 2024

PAC, 31 OCT 2024 to 26 DEC 2024