

CAPE ROMANZOF SIX DEPARTURE (OBSTACLE) (CZF6.HPB)

[USAF]

KENAI RADIO  
122.1  
UNICOM  
126.2 (CTAF)  
ANCHORAGE CENTER  
124.5 266.8

MILITARY CERTIFIED  
AIRCREWS OR AUTHORIZED  
CONTRACT AIRCRAFT ONLY

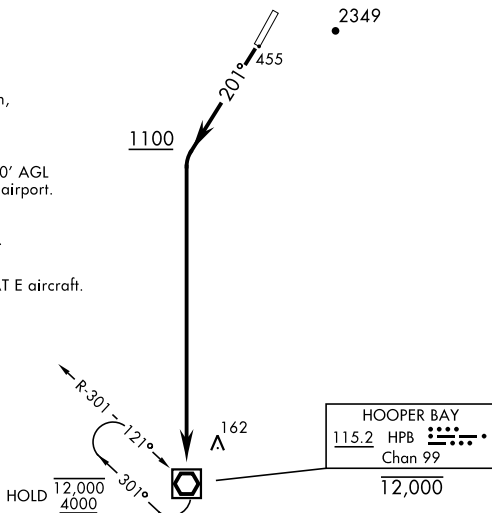
NOT FOR CIVIL USE

CAUTION:  
Terrain rises rapidly West, North,  
and East of centerline.

Uncontrolled Airspace below 700' AGL  
within 7 NM of Cape Romanzof airport.

Night operations not authorized.

Procedure not authorized for CAT E aircraft.



AK, 31 OCT 2024 to 26 DEC 2024

AK, 31 OCT 2024 to 26 DEC 2024



DEPARTURE ROUTE DESCRIPTION

TAKEOFF RWY 2: Departures not authorized.

TAKEOFF RWY 20: Climb heading  $201^\circ$  to 1100, then climbing left turn direct HPB VOR/DME and hold, continue climb to 4000 or ATC assigned altitude.