

CAPE ROMANZOF, ALASKA

RNAV (GPS)-A

APCH CRS 021°	Rwy Idg TDZE Arprt Elev	N/A N/A 467
-------------------------	-------------------------------	--------------------------

- (USAF)

CAPE ROMANZOF LRRS (PACZ)

RNP APCH-GPS

MISSED APPROACH: Climbing left turn to 3000 direct HAGEL and hold.

▼ * Circling to Rwy 20 not authorized.

ANCHORAGE CENTER
124.5 266.8

CTAF
126.2

KENAI RADIO
122.1

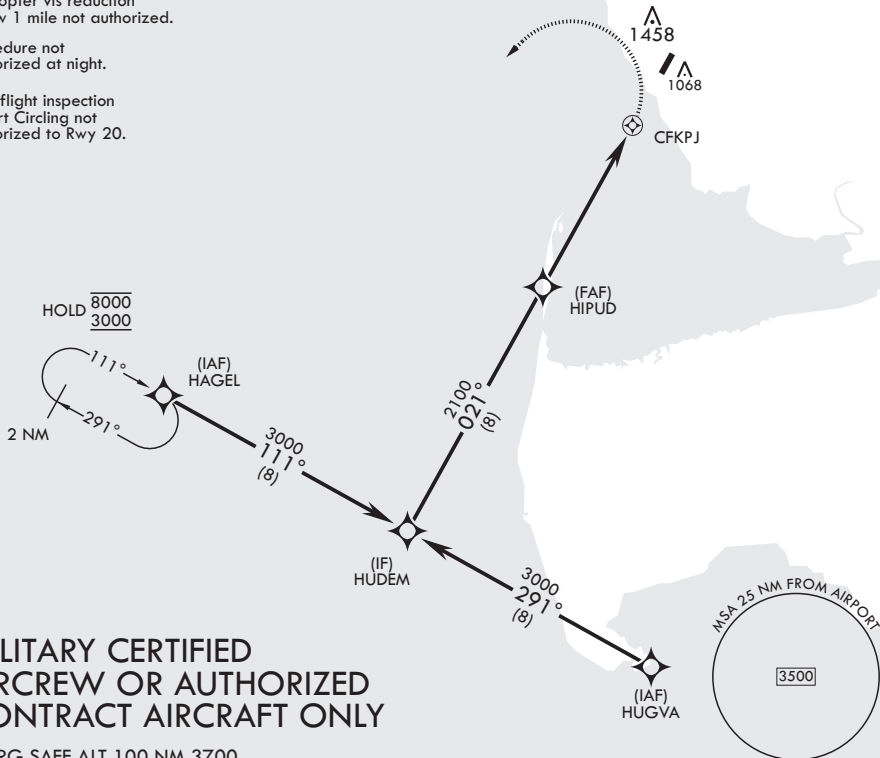
Uncontrolled airspace below 700' AGL within 7 NM of Cape Romanzof airport.

NOT FOR CIVIL USE

Helicopter vis reduction below 1 mile not authorized.

Procedure not authorized at night.

IAW flight inspection report Circling not authorized to Rwy 20.



MILITARY CERTIFIED AIRCREW OR AUTHORIZED CONTRACT AIRCRAFT ONLY

EMERG SAFE ALT 100 NM 3700

<p>HUDEM</p>	<p>3000</p>	<p>HAGEL</p>	<p>ELEV 467</p>										
<table border="1"> <thead> <tr> <th>CATEGORY</th> <th>A</th> <th>B</th> <th>C</th> <th>D</th> </tr> </thead> <tbody> <tr> <td> <p>☑ CIRCLING*</p> </td> <td>1760-2</td> <td>1293 (1300-2)</td> <td>1760-3 1293 (1300-3)</td> <td>NA</td> </tr> </tbody> </table>				CATEGORY	A	B	C	D	<p>☑ CIRCLING*</p>	1760-2	1293 (1300-2)	1760-3 1293 (1300-3)	NA
CATEGORY	A	B	C	D									
<p>☑ CIRCLING*</p>	1760-2	1293 (1300-2)	1760-3 1293 (1300-3)	NA									

CAPE ROMANZOF, ALASKA
Amdt 1 15JUN23

61°47'N - 166°02'W

CAPE ROMANZOF LRRS (PACZ)
RNAV (GPS)-A

AK, 31 OCT 2024 to 26 DEC 2024

AK, 31 OCT 2024 to 26 DEC 2024