

RNAV (GPS) RWY 11

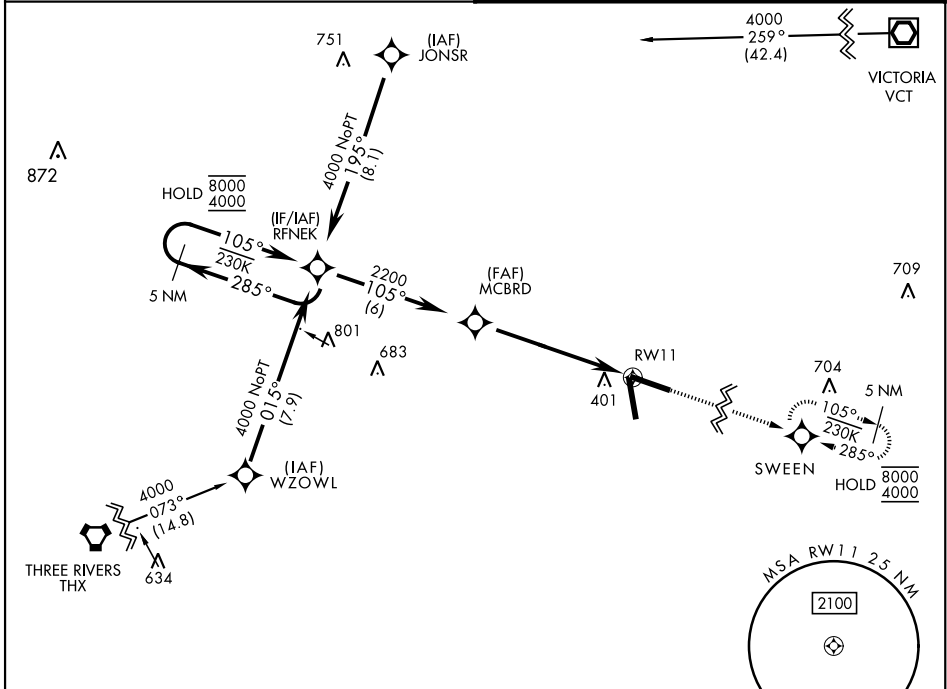
APCH CRS	Rwy Idg	8000
105°	TDZE	318
	Arprt Elev	322

[USN]

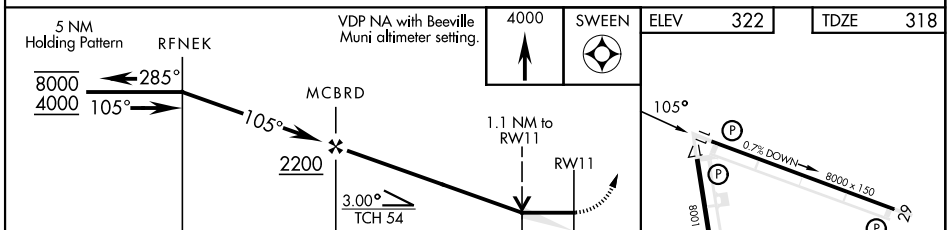
GOLIAD NOLF (KNGT)

RNP APCH MISSED APPROACH: Climb to 4000 direct SWEEN and hold, continue climb-in-hold to 4000.
When local altimeter setting not received, use Beeville Muni altimeter setting.

ASOS 353.675	CTAF 132.875 307.075
------------------------	--------------------------------



US Navy Training Wing Four Use Only
EMERG SAFE ALT 100 NM 11,100



CATEGORY	A	B	C	D
LNAV MDA	720-1	402 (400-1)	720-1 1/8	402 (400-1 1/8)
C CIRCLING	800-1 478 (500-1)	820-1 498 (500-1)	820-1 1/2 498 (500-1 1/2)	880-2 558 (600-2)
BEEVILLE MUNI ALTIMETER SETTING MINIMA				
LNAV MDA	760-1	442 (500-1)	760-1 3/8	442 (500-1 3/8)
C CIRCLING	800-1 478 (500-1)	820-1 498 (500-1)	820-1 1/2 498 (500-1 1/2)	880-2 558 (600-2)

ELEV	322	TDZE	318
HIRL Rwy 11-29, 17-35 TDZL Rwy 11-29, 17-35			

RNAV (GPS) RWY 11

SC-3, 31 OCT 2024 to 28 NOV 2024

SC-3, 31 OCT 2024 to 28 NOV 2024