

# RNAV (GPS) RWY 17

APCH CRS **166°** Rwy Idg **8001**  
 TDZE **322**  
 Arpt Elev **322**

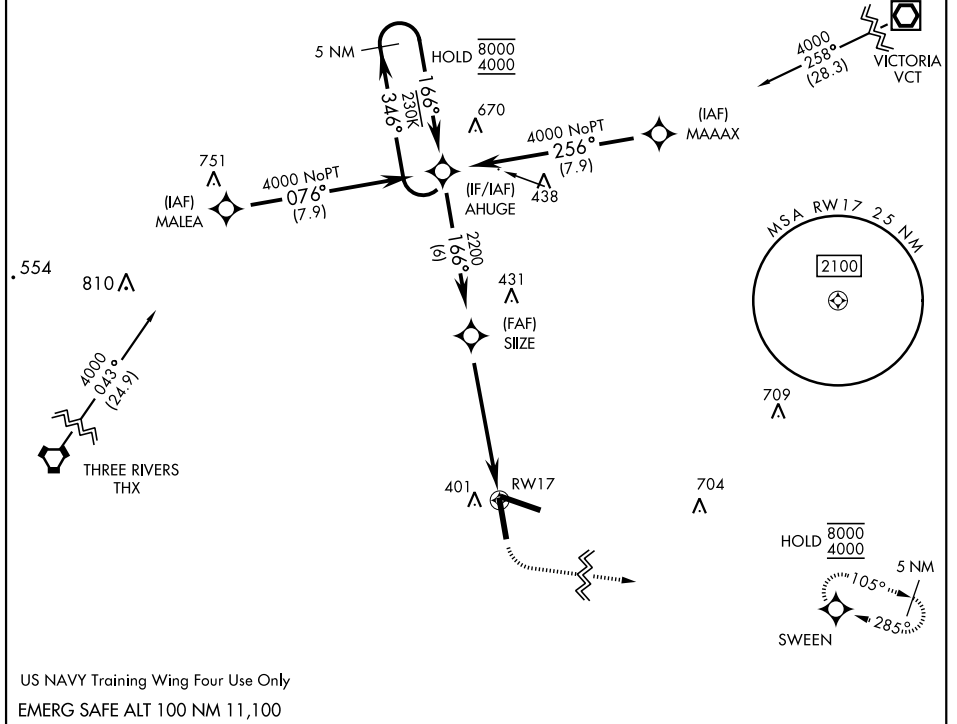
[USN]

GOLIAD NOLF (KNGT)

RNP APCH  
 When local altimeter setting not received, use Beeville Muni altimeter setting.

MISSED APPROACH: Climb to 900 then climbing left turn to 4000 direct SWEENEY and hold, continue climb-in-hold to 4000.

ASOS **353.675** CTAF **132.875 307.075**



SC-3, 31 OCT 2024 to 28 NOV 2024

SC-3, 31 OCT 2024 to 28 NOV 2024

5 NM Holding Pattern AHUGE 8000 ← 346° 4000 → 166°	VDP NA with Beeville Muni altimeter setting. 900 4000 SWEENEY				ELEV 322 TDZE 322
CATEGORY	A	B	C	D	
LNAV MDA	640-1 318 (400-1)				
CIRCLING	760-1	780-1	780-1½	880-2	
	438 (500-1)	458 (500-1)	458 (500-1½)	558 (600-2)	
BEEVILLE MUNI ALTIMETER SETTING MINIMA					
LNAV MDA	680-1 358 (400-1)				
CIRCLING	800-1	820-1	820-1½	880-2	
	478 (500-1)	498 (500-1)	498 (500-1½)	558 (600-2)	

# RNAV (GPS) RWY 17