

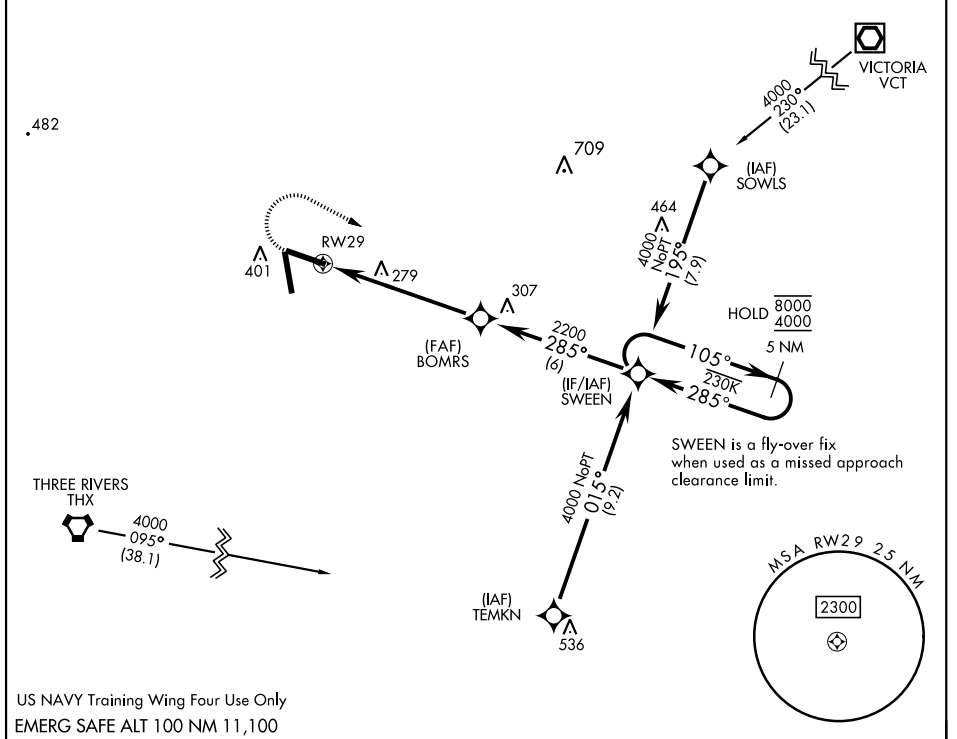
RNAV (GPS) RWY 29

APCH CRS	Rwy Idg	8000
285°	TDZE	285
	Arprt Elev	322

[USN]

GOLIAD NOLF (KNGT)

RNP APCH	MISSED APPROACH: Climb to 900 then climbing right turn to 4000 direct SWEEN and hold, continue climb-in-hold to 4000.
ASOS 353.675	CTAF 132.875 307.075



US NAVY Training Wing Four Use Only
EMERG SAFE ALT 100 NM 11,100

 VDP NA with Beeville Muni altimeter setting.	ELEV 322 TDZE 285																														
<table border="1"> <thead> <tr> <th>CATEGORY</th> <th>A</th> <th>B</th> <th>C</th> <th>D</th> </tr> </thead> <tbody> <tr> <td>LNAV MDA</td> <td></td> <td>580-1</td> <td>295</td> <td>(300-1)</td> </tr> <tr> <td> CIRCLING</td> <td>760-1 438 (500-1)</td> <td>780-1 458 (500-1)</td> <td>780-1½ 458 (500-1½)</td> <td>880-2 558 (600-2)</td> </tr> <tr> <td colspan="5" style="text-align: center;">BEEVILLE MUNI ALTIMETER SETTING MINIMA</td> </tr> <tr> <td>LNAV MDA</td> <td colspan="4">640-1 (400-1)</td> </tr> <tr> <td> CIRCLING</td> <td>800-1 478 (500-1)</td> <td>820-1 498 (500-1)</td> <td>820-1½ 498 (500-1½)</td> <td>880-2 558 (600-2)</td> </tr> </tbody> </table>	CATEGORY	A	B	C	D	LNAV MDA		580-1	295	(300-1)	CIRCLING	760-1 438 (500-1)	780-1 458 (500-1)	780-1½ 458 (500-1½)	880-2 558 (600-2)	BEEVILLE MUNI ALTIMETER SETTING MINIMA					LNAV MDA	640-1 (400-1)				CIRCLING	800-1 478 (500-1)	820-1 498 (500-1)	820-1½ 498 (500-1½)	880-2 558 (600-2)	HIRL Rwy 11-29, 17-35 TDZL Rwy 11, 29, 17, 35
CATEGORY	A	B	C	D																											
LNAV MDA		580-1	295	(300-1)																											
CIRCLING	760-1 438 (500-1)	780-1 458 (500-1)	780-1½ 458 (500-1½)	880-2 558 (600-2)																											
BEEVILLE MUNI ALTIMETER SETTING MINIMA																															
LNAV MDA	640-1 (400-1)																														
CIRCLING	800-1 478 (500-1)	820-1 498 (500-1)	820-1½ 498 (500-1½)	880-2 558 (600-2)																											

RNAV (GPS) RWY 29

SC-3, 31 OCT 2024 to 28 NOV 2024

SC-3, 31 OCT 2024 to 28 NOV 2024