

# COPTER RNAV (GPS) RWY 35

APCH CRS	Rwy Idg	2005
355°	TDZE	1091
	Arprt Elev	1091

[USA]

MULDROW AHP (KHMY)

RNP APCH - GFS

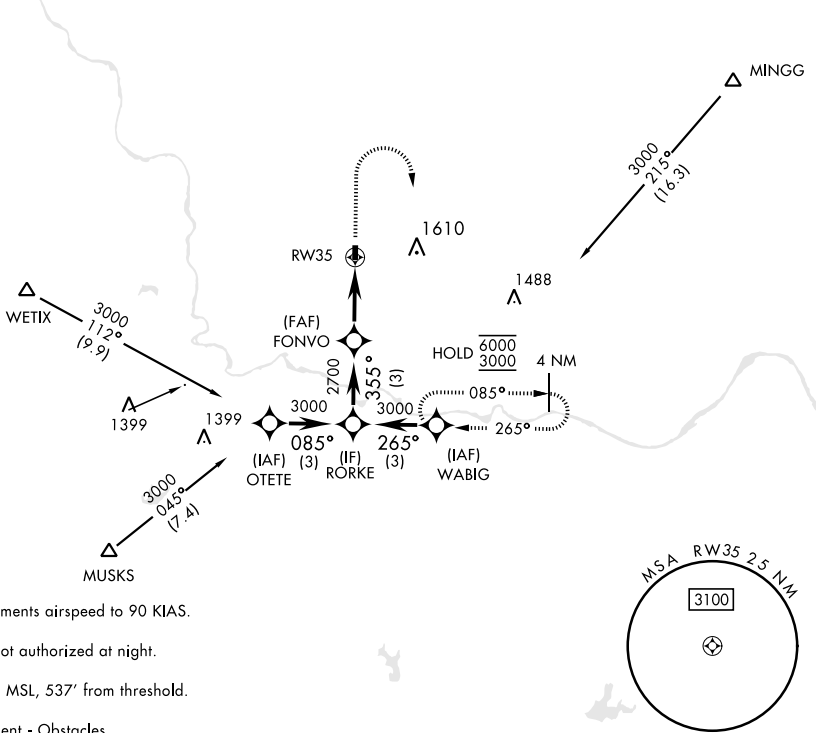
▼ Obtain local altimeter setting on CTAF; when not received, use University of Oklahoma Westheimer altimeter setting minimums.  
 ▲ NA

MISSED APPROACH: Climb to 1600, then climbing right turn to 3000 direct WABIG and hold.

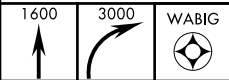
OKC CITY APP CON  
**124.2 336.4**

MULDROW OPS (Advisory service only)  
**46.9 139.425 227.2 (CTAF)**

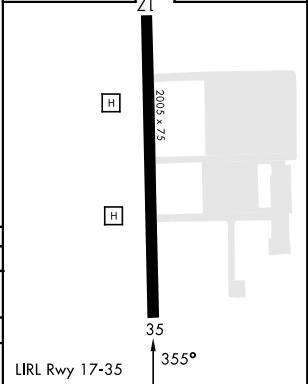
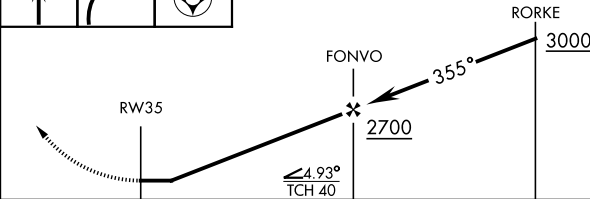
1329



- Limit all segments airspeed to 90 KIAS.
- Procedure not authorized at night.
- Trees 1141' MSL, 537' from threshold.
- Visual segment - Obstacles.



ELEV	1091	TDZE	1091
------	------	------	------



CATEGORY	COPTER		
RNAV MDA	1580-1	489	(500-1)
UNIVERSITY OF OKLAHOMA WESTHEIMER ALTIMETER SETTING MINIMUMS			
RNAV MDA	1640-1	549	(600-1)

# COPTER RNAV (GPS) RWY 35

SC-1, 31 OCT 2024 to 28 NOV 2024

SC-1, 31 OCT 2024 to 28 NOV 2024