

NDB/DME TTK 375	APP CRS 221°	Rwy Idg TDZE Apt Elev	6013 10 10
Chan 111 (116.4)			

NDB RWY 22

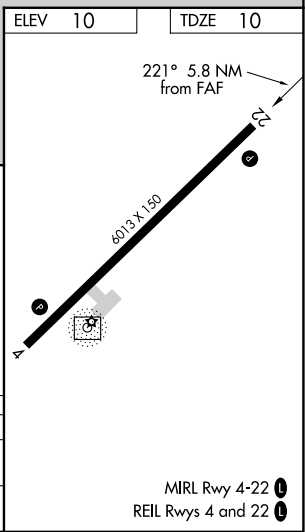
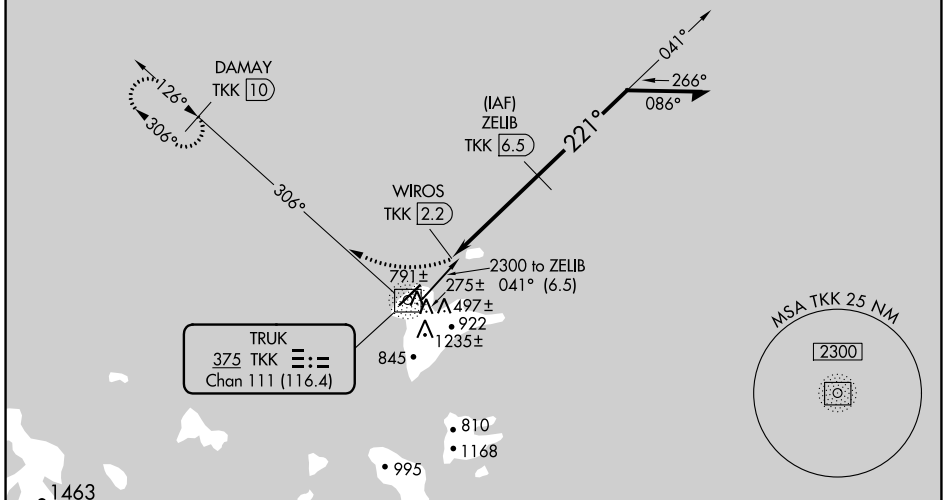
CHUUK INTL (TKK) (PTKK)

▽ Obtain local altimeter setting on CTAF; when not received, procedure NA.
▲ Circling NA southeast of Rwy 4-22. DME Required.
 No controlled airspace below 5500.

MISSED APPROACH: Climbing right turn to 2000 on BRG-306 from TTK NDB/DME to DAMAY/TKK 10 DME and hold.

TRUK RADIO
123.6 (CTAF)

DME REQUIRED



2000 TKK 306° DAMAY TTK 10	ZELIB TTK 6.5		Remain within 10 NM	
TKK NDB/DME	WIROS TTK 2.2	1900	2300	
≤ 3.00° TCH 50				
CATEGORY	A	B	C	D
S-22	800-1¾	790 (800-1¾)	800-2½	790 (800-2½)
C CIRCLING	800-1¾	790 (800-1¾)	800-2½	790 (800-2½)

PAC, 31 OCT 2024 to 26 DEC 2024

PAC, 31 OCT 2024 to 26 DEC 2024