

NDB/DME TTK <b>375</b>	APP CRS <b>054°</b>	Rwy ldg TDZE Apt Elev	<b>6013</b> <b>10</b> <b>10</b>
Chan <b>111 (116.4)</b>			

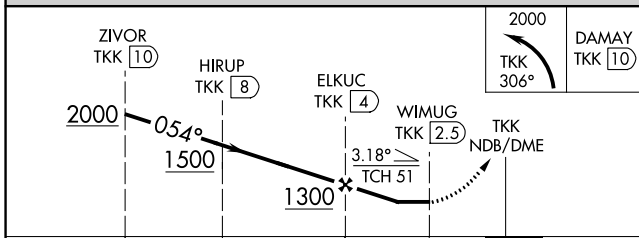
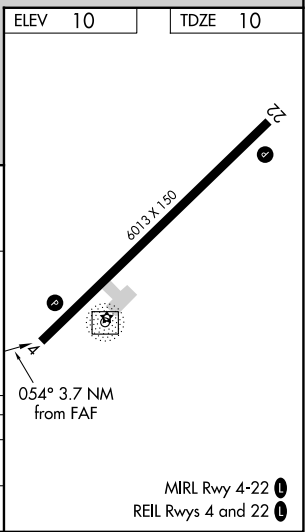
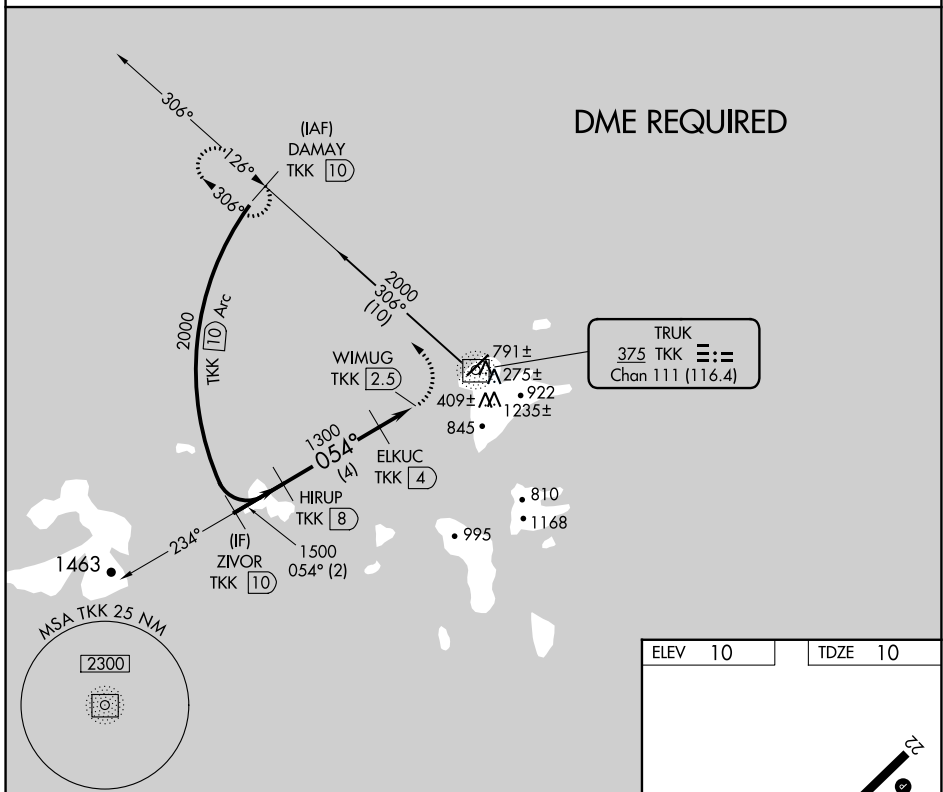
# NDB RWY 4

CHUUK INTL (TKK) (PTKK)

- ▼ Obtain local altimeter setting on CTAF; when not received, procedure NA.
- ▲ Circling NA southeast of Rwy 4-22. DME required. No controlled airspace below 5500.

MISSED APPROACH: Climbing left turn to 2000 on TTK NDB/DME bearing 306° to DAMAY/TKK 10 DME and hold.

TRUK RADIO  
**123.6** (CTAF)



CATEGORY	A	B	C	D
S-4		720-2½	710 (800-2½)	
CIRCLING		720-2½	710 (800-2½)	