

TONOPAH, NEVADA

VOR/DME or TACAN RWY 14

VORTAC TQQ 113.0 Chan 77	APCH CRS 145°	Rwy Idg THRE 12,001 5473 Arprt Elev 5550
--	-------------------------	--

AL-3188 [USAF]

TONOPAH TEST RANGE (KTNX)

▼ * When ALS inop, increase CAT AB vis to 1 mile, CAT CDE vis to 1 3/8 miles.
** Circling not authorized W of Rwy 32.

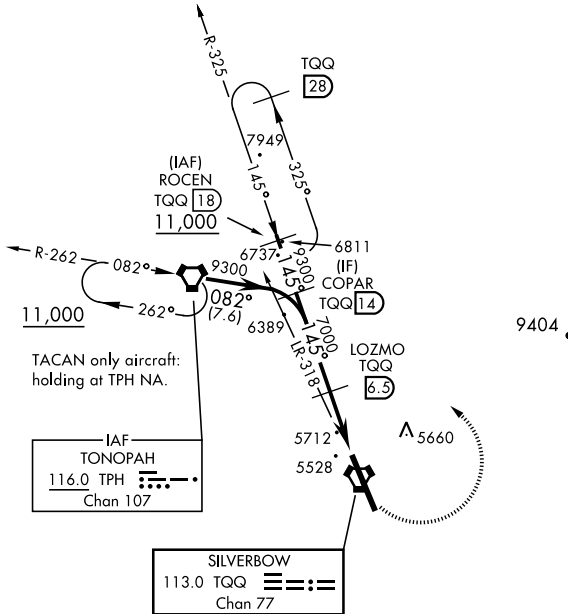


MISSED APPROACH: Turn left climbing to 11,000 via TQQ R-325 to ROCEN and hold, continue climb-in-hold to 11,000.

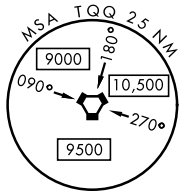
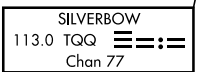
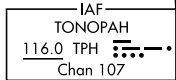
AWOS 113.0	NELLIS CONTROL 119.35 254.4	SILVERBOW TOWER* 124.75 257.95	GND CON 127.25 335.5
----------------------	---------------------------------------	--	--------------------------------

CAUTION: High terrain 3 NM W of Rwy. Unlit terrain 5558' MSL, 200' prior to Rwy 32 threshold, 200' left of centerline.

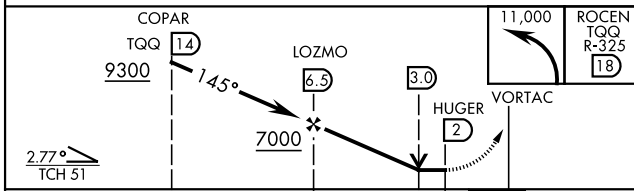
When VGSi inop, procedure NA at night.
USAF ONLY: When Rwy 14 VGSi inop, straight-in Rwy 14 authorized at night with MAJCOM A3 approval.
CAUTION: When Rwy 32 VGSi inop, circling to Rwy 32 NA at night.



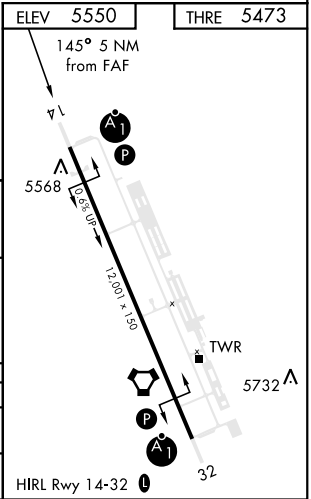
TACAN only aircraft: holding at TPH NA.



EMERG SAFE ALT 100 NM 16,600



CATEGORY	A	B	C	D	E
S-14*	5980-1/2 (500-1/2)		5980-1 507 (500-1)		
CIRCLING**	6040-1 490 (500-1)		6040-1/2 490 (500-1/2)		6100-2 550 (600-2)



TONOPAH, NEVADA
Amdt 3 09JAN14

37°47'N - 116°47'W

TONOPAH TEST RANGE (KTNX)

VOR/DME or TACAN RWY 14

SW-4, 31 OCT 2024 to 28 NOV 2024

SW-4, 31 OCT 2024 to 28 NOV 2024