

# VOR/DME Z RWY 14

VORTAC TQQ <b>113.0</b> Chan <b>77</b>	APCH CRS <b>145°</b>	Rwy Idg THRE <b>12,001</b> <b>5473</b> Arprt Elev <b>5550</b>
--	-------------------------	--

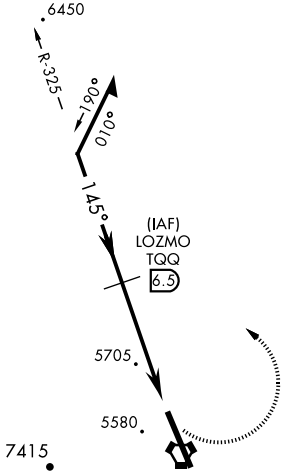
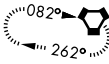
AL-3188 [USAF]

TONOPAH TEST RANGE (KTNX)

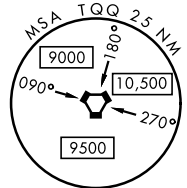
* Circling not authorized W of Rwy 14-32.		MISSED APPROACH: Turn left, climb to 11,000 direct to TPH VORTAC and hold. Continue climb in holding to 11,000.
---	--	---

AWOS <b>113.0</b>	NELLIS CONTROL <b>119.35 254.4</b>	SILVERBOW TOWER* <b>124.75 257.95</b> <b>0</b>	GND CON <b>127.25 335.5</b>
----------------------	---------------------------------------	---	--------------------------------

TONOPAH  
116.0 TPH  
Chan 107



SILVERBOW  
113.0 TQQ  
Chan 77



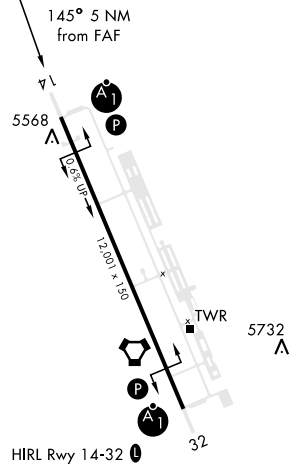
When VGSI inop, procedure NA at night.

USAF ONLY: When Rwy 14 VGSI inop, straight-in Rwy 14 authorized at night with MAJCOM A3 approval.

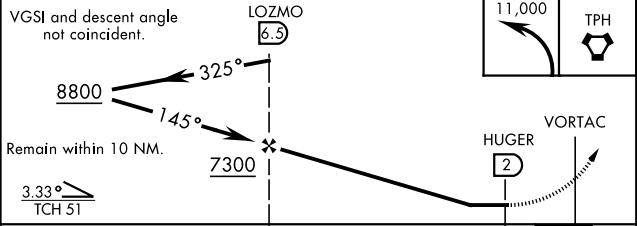
CAUTION: When Rwy 32 VGSI inop, circling to Rwy 32 NA at night.

CAUTION: High terrain 3 NM W of Rwy. Unlit terrain 5558' MSL, 200' prior to Rwy 32 threshold, 200' left of centerline.

ELEV 5550	THRE 5473
-----------	-----------



EMERG SAFE ALT 100 NM 16,600 FROM TQQ



CATEGORY	A	B	C	D	E
S-14	5960/24	487 (500-1/2)	5960/50 487 (500-1)	NOT AUTHORIZED	
CIRCLING*	6040-1	490 (500-1)	6040-1 1/2 490 (500-1 1/2)	NOT AUTHORIZED	

# VOR/DME Z RWY 14

SW-4, 31 OCT 2024 to 28 NOV 2024

SW-4, 31 OCT 2024 to 28 NOV 2024