

VOR/DME Z RWY 32

VORTAC TQQ 113.0 Chan 77	APCH CRS 314°	Rwy Idg THRE: 12,001 5550 Arpt Elev 5550
--	-------------------------	---

AL-3188 [USAF]

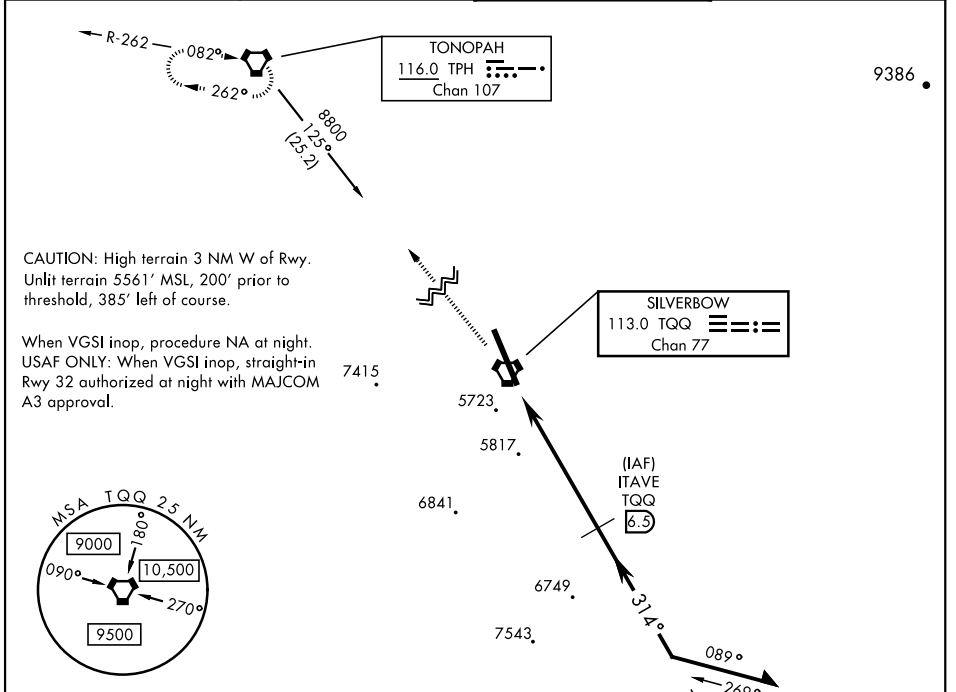
TONOPAH TEST RANGE (KTNX)

V *Circling not authorized W of Rwy 14-32.

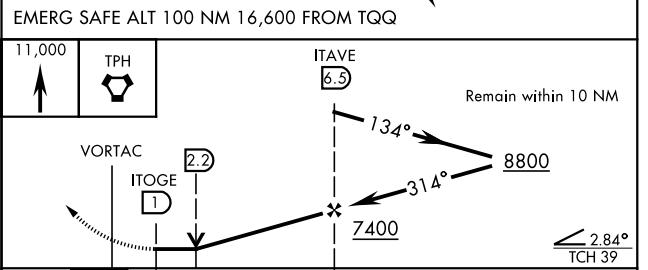
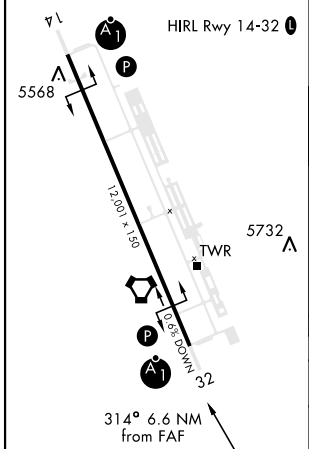
ALSIF-1

MISSED APPROACH: Climb to 11,000 direct to TPH VORTAC and hold. Continue climb in holding to 11,000.

AWOS 113.0	NELLIS CONTROL 119.35 254.4	SILVERBOW TOWER* 124.75 257.95 0	GND CON 127.25 335.5
----------------------	---------------------------------------	--	--------------------------------



ELEV 5550	THRE 5550
------------------	------------------



CATEGORY	A	B	C	D	E
S-32	6080/24 530 (600-1/2)	6080/55 530 (600-1)	6080/55 530 (600-1)	NOT AUTHORIZED	
C CIRCLING*	6080-1 530 (600-1)	6080-1 530 (600-1)	6080-1 530 (600-1)	NOT AUTHORIZED	

VOR/DME Z RWY 32

SW-4, 31 OCT 2024 to 28 NOV 2024

SW-4, 31 OCT 2024 to 28 NOV 2024