

# RNAV (GPS) RWY 23

APCH CRS	Rwy Idg	<b>5018</b>
<b>230°</b>	TDZE	<b>34</b>
	Arprt Elev	<b>41</b>

AL-3214 [USA]

CAMP PEARY LNDG STRIP (KW94)

RNP APCH - GPS  
 ▼ Restricted airfield, PPR. Contact Camp Peary Ops prior to landing.  
 Williamsburg Jamestown (KJGG) Primary altimeter setting.

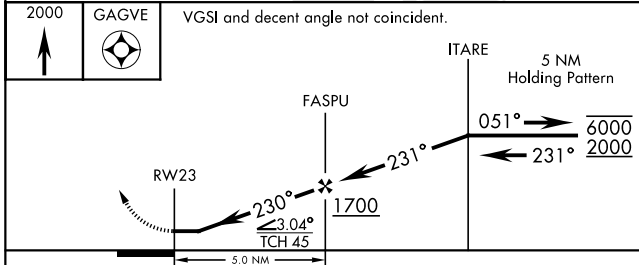
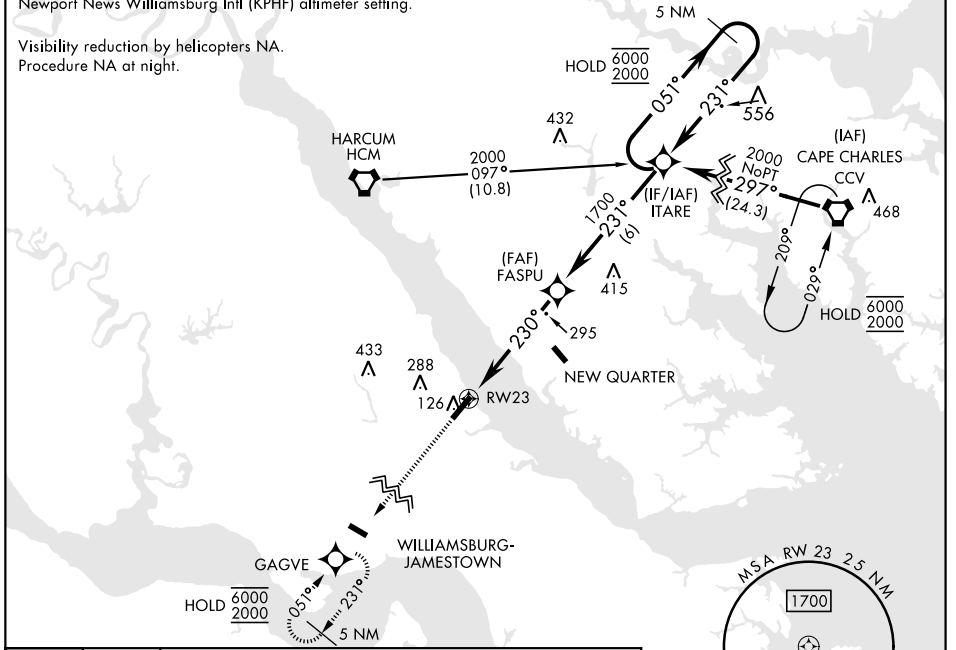
MISSED APPROACH: Climb to 2000 direct GAGVE and hold.

WILLIAMSBURG-JAMESTOWN AWOS-3  
**120.625**

NORFOLK APP CON  
**125.7 335.625**

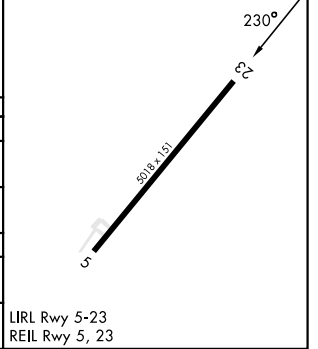
When primary altimeter setting (KJGG) not received, use Newport News Williamsburg Intl (KPHF) altimeter setting.

Visibility reduction by helicopters NA.  
 Procedure NA at night.



ELEV	41	TDZE	34
------	----	------	----

CATEGORY	A	B	C	D
LNVA MDA	560-1	526 (600-1)	560-1½	526 (600-1½)
CIRCLING	560-1 519 (600-1)	620-1 579 (600-1)	620-1½ 579 (600-1½)	760-2¼ 719 (800-2¼)
NEWPORT NEWS / WILLIAMSBURG INTL ALTIMETER SETTING MINIMUMS				
LNVA MDA	580-1	546 (600-1)	580-1½	546 (600-1½)
CIRCLING	580-1 539 (600-1)	620-1 579 (600-1)	620-1½ 579 (600-1½)	780-2¼ 739 (800-2¼)



# RNAV (GPS) RWY 23

NE-3, 31 OCT 2024 to 28 NOV 2024

NE-3, 31 OCT 2024 to 28 NOV 2024