

APCH CRS 357°	Rwy Idg TDZE Arprt Elev	12,351 911 911
-------------------------	-------------------------------	---

AL-5010 (USAF)

GRAND FORKS AFB (KRDR)

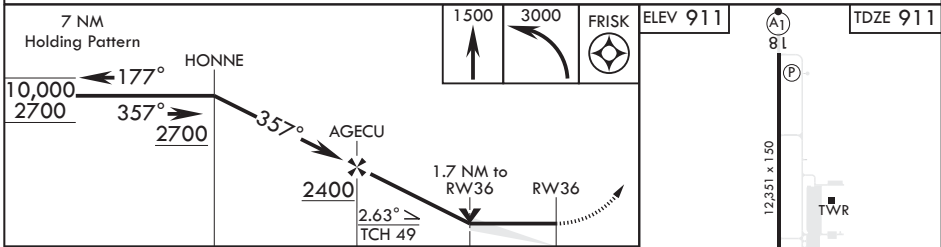
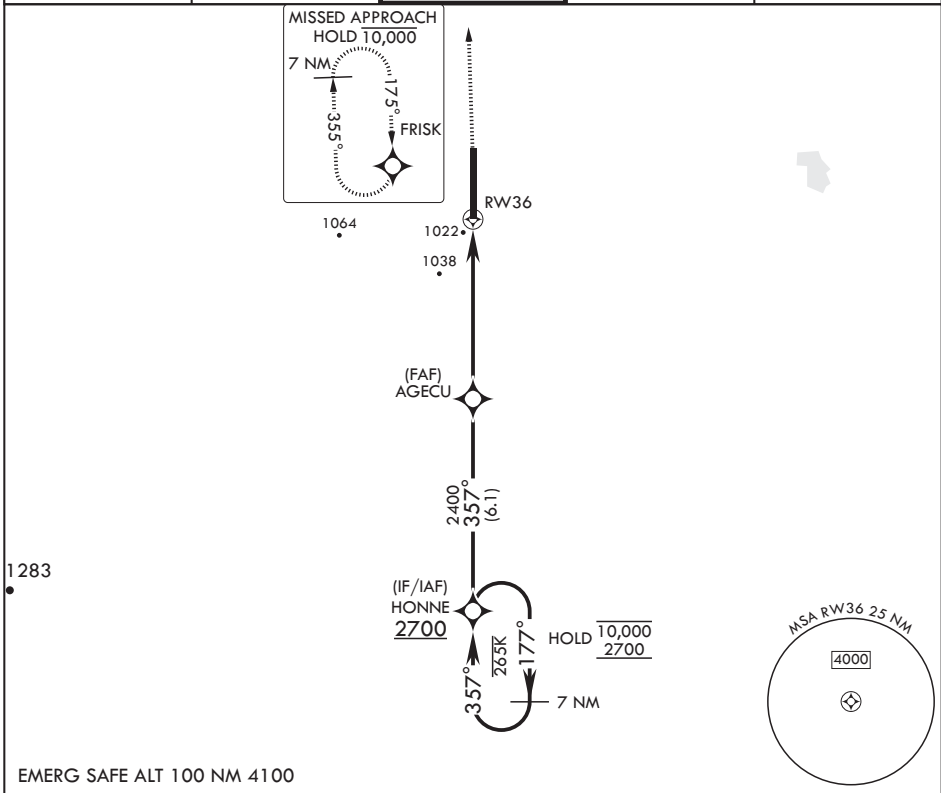
RNP APCH-GPS



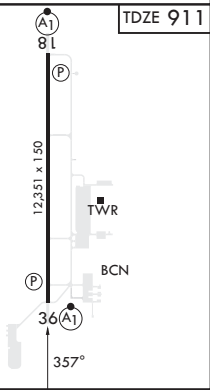
MISSED APPROACH: Climb to 1500 then climbing left turn to 3000 direct FRISK and hold.

* When ALS inop, increase CAT AB RVR to 55, vis to 1 mile; CAT CDE vis to 1 1/2 miles.
** Circling E of Rwy 18-36 not authorized.

ATIS 273.45	APP CON 118.1 318.1	RED RIVER TOWER 124.9 349.0	GND CON 119.15 275.8	CLNC DEL 119.15 360.7
-----------------------	-------------------------------	---------------------------------------	--------------------------------	---------------------------------



CATEGORY	A	B	C	D	E
LNAV MDA*	1440/24	529 (600-½)	1440/55	529 (600-1)	
CIRCLING**	1440-1	529 (600-1)	1440-1½ 529 (600-1½)	1540-2 629 (700-2)	1560-2¼ 649 (700-2¼)



NC-1, 31 OCT 2024 to 28 NOV 2024

NC-1, 31 OCT 2024 to 28 NOV 2024