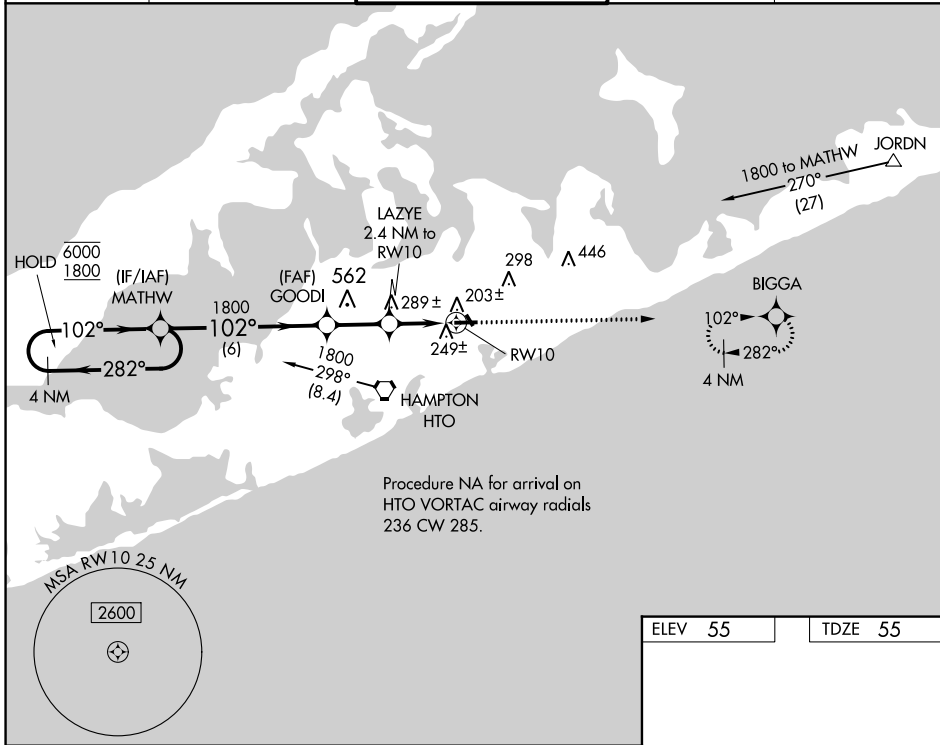


WAAS CH 77844 W10B	APP CRS 102°	Rwy Idg 4255 TDZE 55 Apt Elev 55
--	------------------------	---

RNAV (GPS) Z RWY 10

EAST HAMPTON TOWN (JPX)

RNP APCH - GPS.		<p>⚠ Rwy 10 helicopter visibility reduction below 1 SM NA. Baro-VNAV NA when using Westhampton Beach altimeter setting. For uncompensated Baro-VNAV systems, LNAV/VNAV NA below -1.5°C or above 54°C. When local altimeter setting not received, use Westhampton Beach altimeter setting; increase LPV DA to 404 feet; increase LNAV/VNAV DA to 543 feet; and increase all MDAs 60 feet. Straight-in Rwy 10 at night, operational VGSI required, remain on or above VGSI glidepath until threshold.</p>		<p>MISSED APPROACH: Climb to 2000 direct BIGGA and hold.</p>	
AWOS-3PT 118.075	NEW YORK APP CON 125.975 343.65	EAST HAMPTON TOWER ★ 125.225 (CTAF) 0	GND CON 121.9	CLNC DEL 118.95	



NE-2, 31 OCT 2024 to 28 NOV 2024

NE-2, 31 OCT 2024 to 28 NOV 2024

4 NM Holding Pattern		<p>VGSI and RNAV glidepath not coincident (VGSI Angle 3.30/TCH 49).</p>		ELEV 55	TDZE 55
<p>MATHW</p> <p>6000 ← 282°</p> <p>1800 ← 102°</p> <p>GP 3.42°</p> <p>TCH 60</p>		<p>GOODI</p> <p>1800</p> <p>LAZYE</p> <p>2.4 NM to RWY 10</p> <p>980</p> <p>RWY 10</p>	<p>2000</p> <p>BIGGA</p>		
CATEGORY	A	B	C	D	
LPV DA		361-1	306 (400-1)		NA
LNAV/VNAV DA		500-1 $\frac{3}{8}$	445 (500-1 $\frac{3}{8}$)		NA
LNAV MDA		500-1	445 (500-1)	500-1 $\frac{3}{8}$	445 (500-1 $\frac{3}{8}$)

MIRL Rwy 10-28 **Ⓢ**
REIL Rwy 10
REIL Rwy 28 **Ⓢ**