

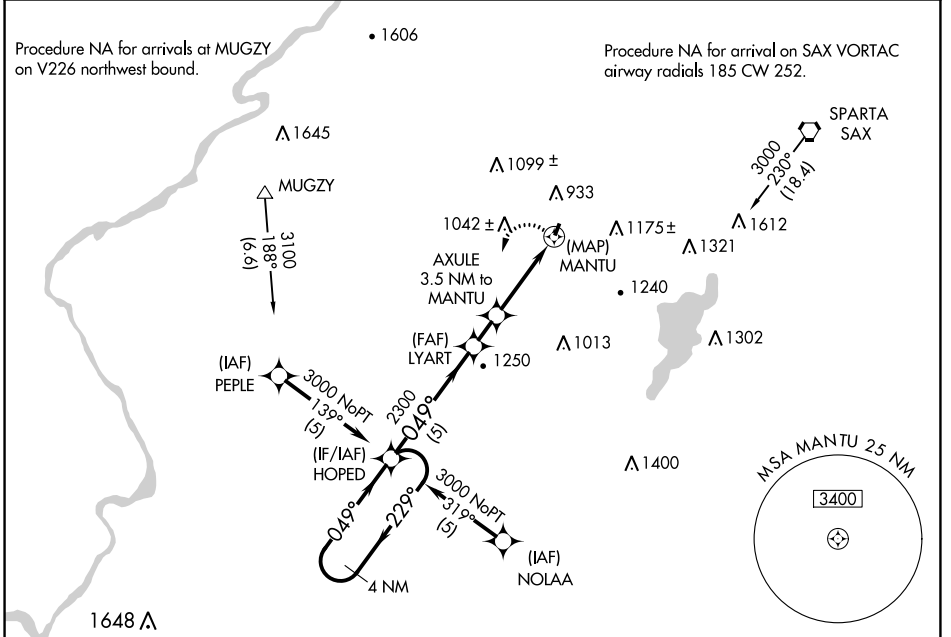
APP CRS	Rwy Idg	1981
049°	TDZE	583
	Apt Elev	583

RNAV (GPS) RWY 3

AEROFLEX/ANDOVER (12N)

RNP APCH.	MISSED APPROACH: Climbing left turn to 3000 direct HOPED and hold.
<p>▼ When local altimeter setting not received, use Caldwell altimeter setting and increase all MDA 120 feet. Procedure NA at night. Rwy 3 helicopter visibility reduction below 1 SM NA.</p> <p>▲</p>	

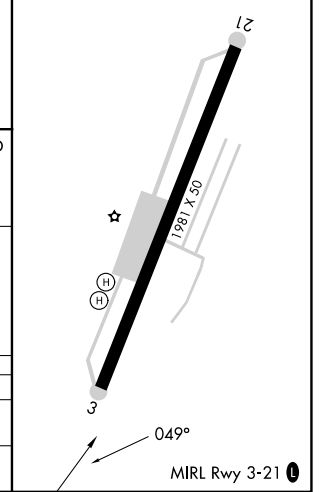
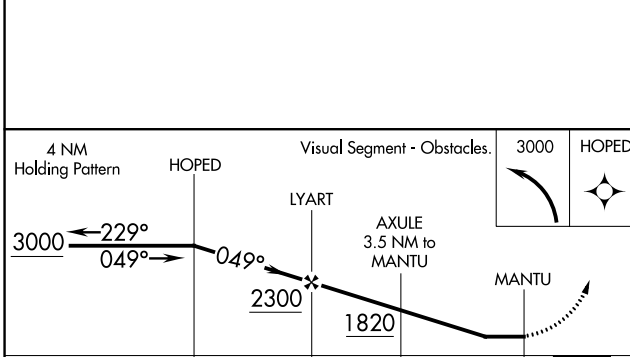
NEWARK APP CON 127.6 379.9	UNICOM 122.8 (CTAF) 0
--------------------------------------	---------------------------------



NE-2, 31 OCT 2024 to 28 NOV 2024

NE-2, 31 OCT 2024 to 28 NOV 2024

ELEV 583	TDZE 583
----------	----------



CATEGORY	A	B	C	D
LNVA MDA	1340-1757 (800-1)		NA	
CIRCLING	1560-1977 (1000-1¼)		NA	