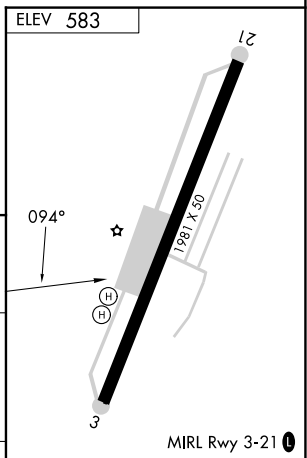
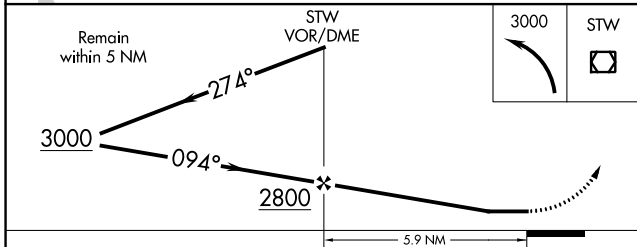
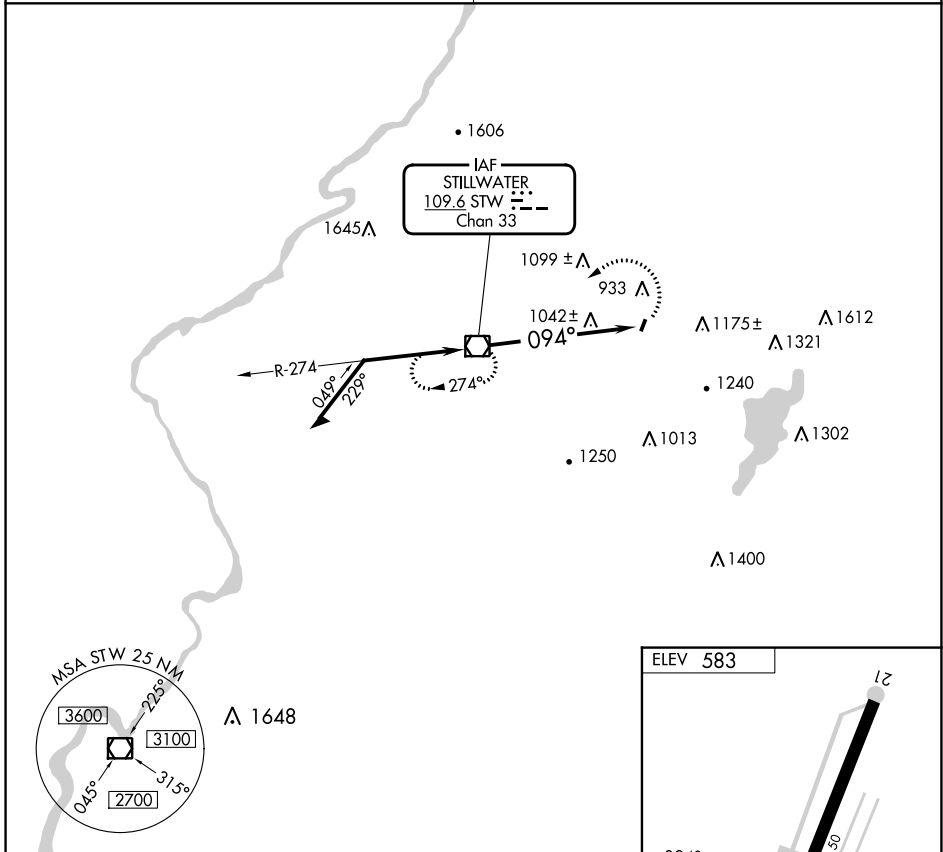


VOR/DME STW <b>109.6</b> Chan <b>33</b>	APP CRS <b>094°</b>	Rwy Idg TDZE Apt Elev	<b>1981</b> <b>N/A</b> <b>583</b>
---	------------------------	-----------------------------	---

**VOR-A**  
AEROFLEX/ANDOVER (12N)

<p><b>▼</b> When local altimeter setting not received, use Caldwell altimeter setting and increase MDA 120 feet. Procedure NA at night.</p>	<p><b>▲</b> MISSED APPROACH: Climbing left turn to 3000 direct STW VOR/DME and hold.</p>
---	--

<p>NEWARK APP CON <b>127.6 379.9</b></p>	<p>UNICOM <b>122.8 (CTAF) 0</b></p>
--	---



CATEGORY	A	B	C	D	FAF to MAP 5.9 NM					
CIRCLING	1560-1¼ 977 (1000-1¼)		NA		Knots	60	90	120	150	180
					Min:Sec	5:54	3:56	2:57	2:22	1:58

NE-2, 31 OCT 2024 to 28 NOV 2024

NE-2, 31 OCT 2024 to 28 NOV 2024