

WAAS CH <b>45627</b> <b>W16A</b>	APP CRS <b>161°</b>	Rwy Idg TDZE Apt Elev	<b>5001</b> <b>643</b> <b>647</b>
--	------------------------	-----------------------------	---

# RNAV (GPS) RWY 16

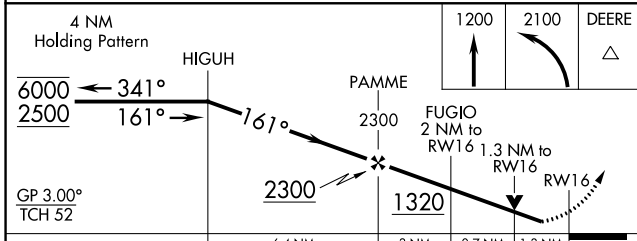
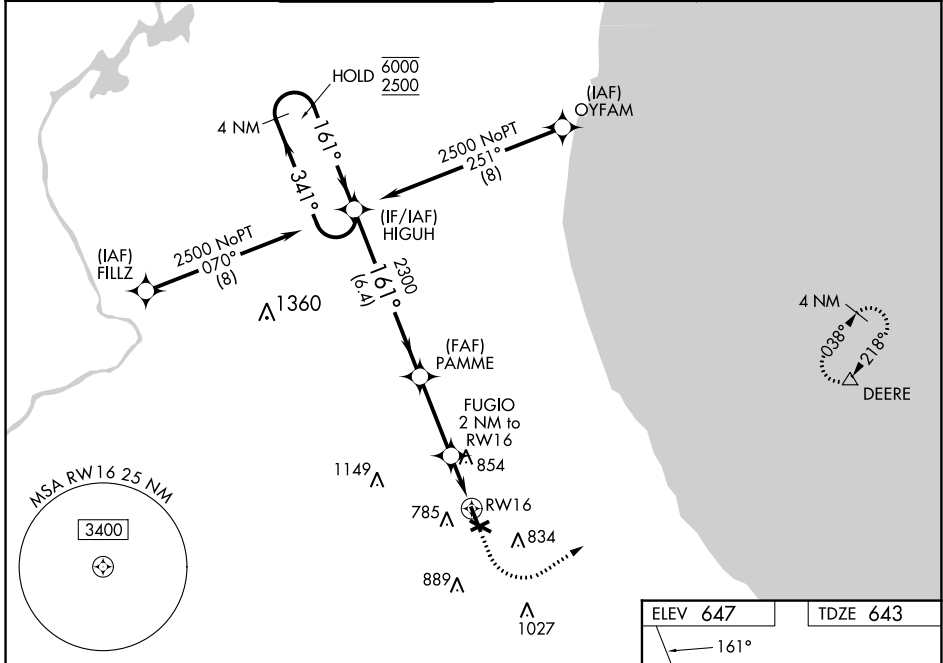
CHICAGO EXEC (PWK)

RNP APCH - GPS.

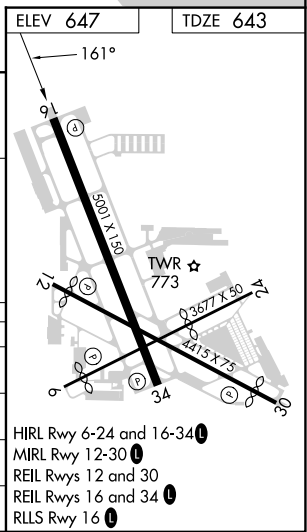
**⚠** Circling Rwy 6, 12, 24, 30 NA at night.  
**⚠** Rwy 16 helicopter visibility reduction below ¾ SM NA.  
 For uncompensated Baro-VNAV systems, LNAV/VNAV NA below -19°C or above 54°C.

MISSED APPROACH: Climb to 1200 then climbing left turn to 2100 direct DEERE and hold.

ATIS <b>124.2</b>	CHICAGO APP CON <b>120.55 306.925</b>	EXECUTIVE TOWER ★ <b>119.9 (CTAF) 0</b>	GND CON <b>121.7</b>	CLNC DEL <b>124.7</b>	CLNC DEL <b>124.7</b> (When twr closed)	UNICOM <b>122.95</b>
----------------------	--	--	-------------------------	--------------------------	---	-------------------------



CATEGORY	A	B	C	D
LPV DA		927-7/8	284 (300-7/8)	
LNAV/VNAV DA		1083-1¼	440 (500-1¼)	
LNAV MDA	1120-1	477 (500-1)	1120-1¾	477 (500-1¾)
<b>C</b> CIRCLING	1140-1 493 (500-1)	1160-1 513 (600-1)	1200-1½ 553 (600-1½)	1460-2¾ 813 (900-2¾)



EC-3, 31 OCT 2024 to 28 NOV 2024

EC-3, 31 OCT 2024 to 28 NOV 2024