

APP CRS	Rwy Idg	3725
300°	TDZE	644
	Apt Elev	647

RNAV (GPS) RWY 30

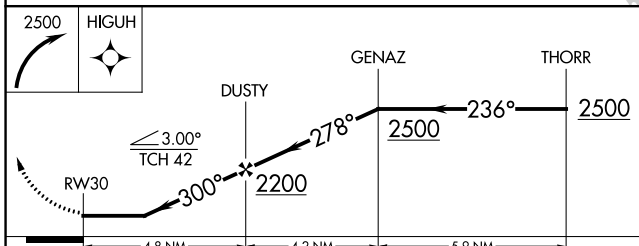
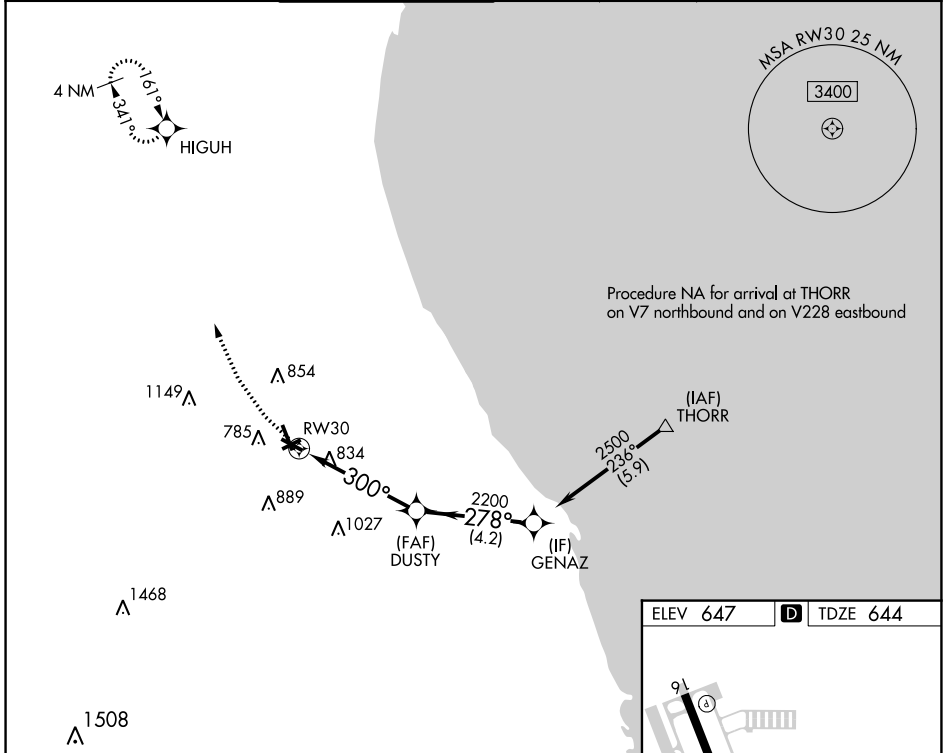
CHICAGO EXEC (PWK)

RNP APCH - GPS.

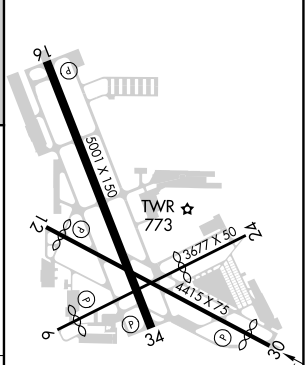
- ▼** Circling Rwy 6, 12, 24, 30 NA at night.
- ▲** Rwy 30 Straight-in procedure NA at night.
- Rwy 30 helicopter visibility reduction below 1 SM NA.

MISSED APPROACH: Climbing right turn to 2500 direct HIGUH and hold.

ATIS	CHICAGO APP CON	EXECUTIVE TOWER ★	GND CON	CLNC DEL	CLNC DEL	UNICOM
124.2	120.55 306.925	119.9 (CTAF) 0	121.7	124.7	124.7 (When twr closed)	122.95



ELEV 647	D TDZE 644
----------	-------------------



CATEGORY	A	B	C	D
LNNAV MDA	1120-1	476 (500-1)	1120-1 ³ / ₈	476 (500-1 ³ / ₈)
CIRCLING	1140-1 493 (500-1)	1160-1 513 (600-1)	1200-1 ¹ / ₂ 553 (600-1 ¹ / ₂)	1460-2 ³ / ₄ 813 (900-2 ³ / ₄)

- HIRL Rwy 6-24 and 16-34 **0**
- MIRL Rwy 12-30 **0**
- REIL Rws 12 and 30
- REIL Rws 16 and 34 **0**
- RLLS Rwy 16 **0**

EC-3, 31 OCT 2024 to 28 NOV 2024

EC-3, 31 OCT 2024 to 28 NOV 2024