


LOC/DME I-EKI <b>110.3</b> Chan <b>40</b>	APP CRS <b>312°</b>	Rwy ldg <b>7510</b> TDZE <b>43</b> Apt Elev <b>46</b>
---	------------------------	---

# LOC RWY 31

CORPUS CHRISTI INTL (CRP)

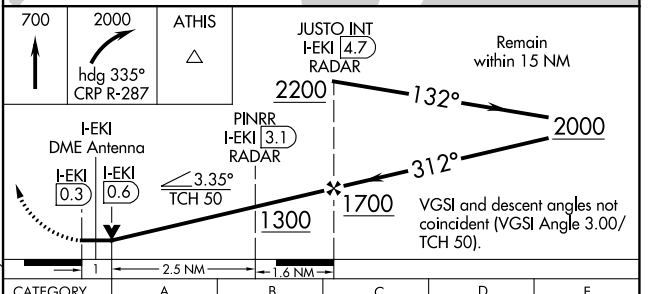
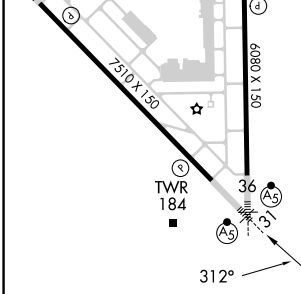
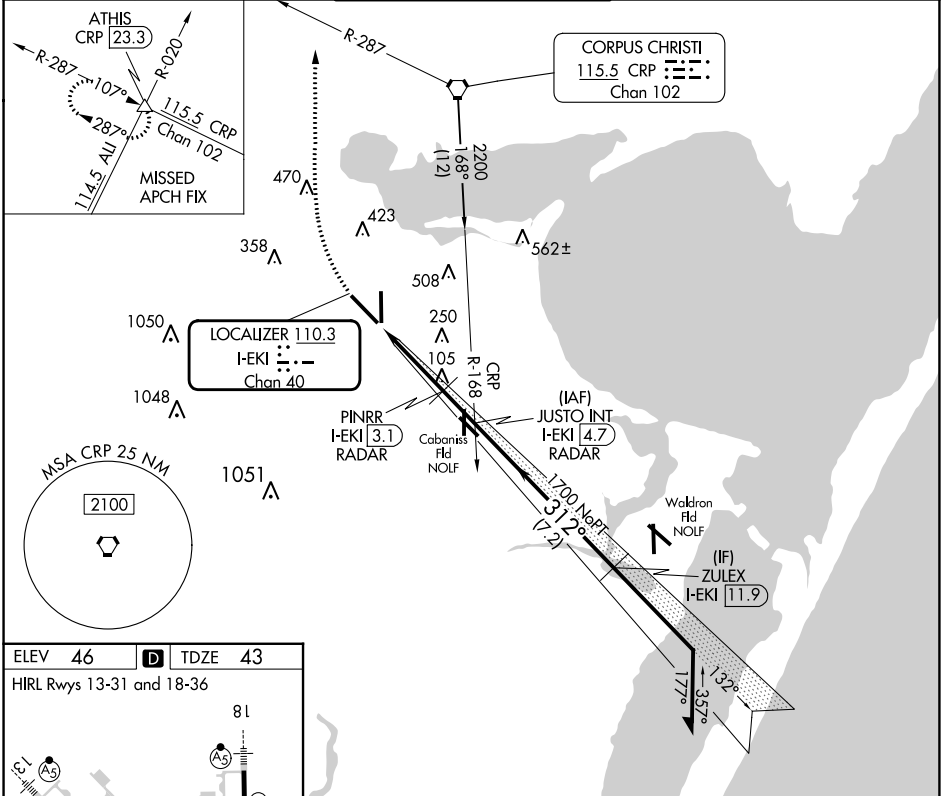
DME or RADAR required.  
RADAR required for procedure entry at ZULEX.

**MALSRR** 

MISSED APPROACH: Climb to 700 then climbing right turn to 2000 on heading 335° and CRP VORTAC R-287 to ATHIS INT/CRP VORTAC 23.3 DME and hold.

For inop ALS, increase S-LOC 31 Cats C, D, and E visibility to 1 SM.

ATIS <b>126.8</b>	CORPUS APP CON <b>120.9 348.725</b>	CORPUS TOWER <b>119.4 257.8</b>	GND CON <b>121.9 269.15</b>	CLNC DEL <b>118.55</b>
----------------------	--	------------------------------------	--------------------------------	---------------------------



FAF to MAP 5.1 NM					
Knots	60	90	120	150	180
Min:Sec	5:06	3:24	2:33	2:02	1:42
CATEGORY	A		B		C
5-31	400-1/2 357 (400-1/2)		400-5/8 357 (400-5/8)		E
CIRCLING	500-1		780-1		820-2 3/4
	454 (500-1)		734 (800-1)		774 (800-2 1/4) 774 (800-2 1/2) 774 (800-2 3/4)

SC-3, 31 OCT 2024 to 28 NOV 2024

SC-3, 31 OCT 2024 to 28 NOV 2024