

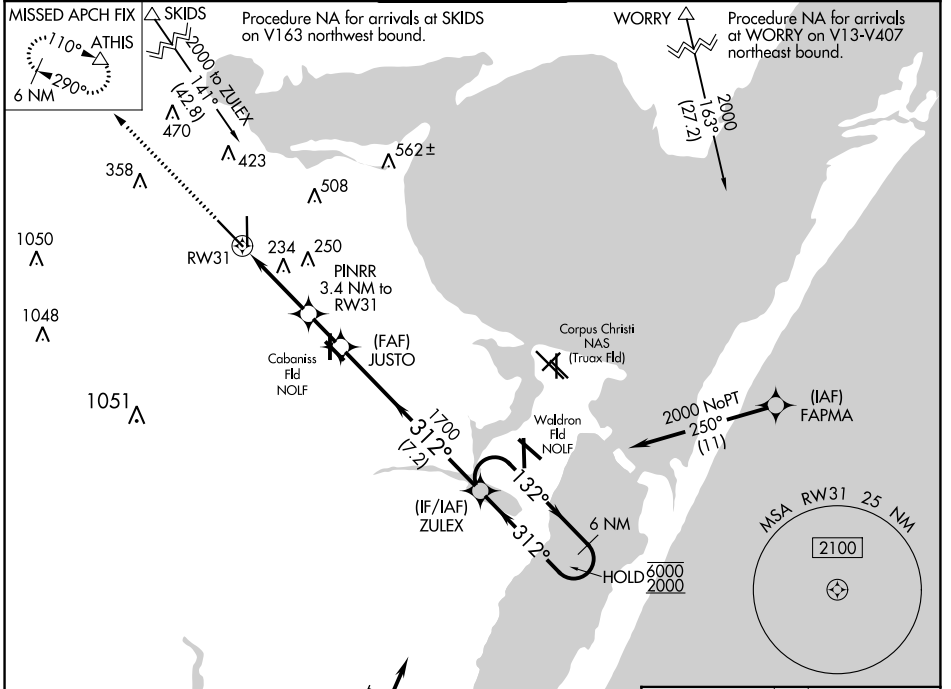
APP CRS	Rwy Idg	7510
312°	TDZE	43
	Apt Elev	46

RNAV (GPS) X RWY 31

CORPUS CHRISTI INTL (CRP)

RNP APCH - GPS	MALSR	MISSED APPROACH: Climb to 2000 direct ATHIS and hold.
For inop ALS, increase LNAV Cat E visibility to 1 3/8 mile.		

ATIS 126.8	CORPUS APP CON 120.9 348.725	CORPUS TOWER 119.4 257.8	GND CON 121.9 269.15	CLNC DEL 118.55
----------------------	--	---	--------------------------------	---------------------------



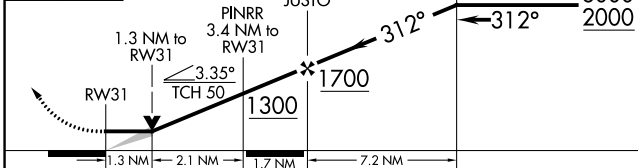
Procedure NA for arrivals at SOLON on V13-20-163 southbound.

2000 NoPT 020° (11.9) (IAF) SOLON

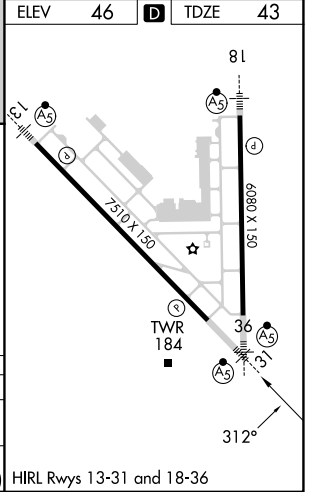
2000 ATHIS

VGSI and descent angles not coincident (VGSI Angle 3.00/TCH 50).

ZULEX 6 NM Holding Pattern



CATEGORY	A	B	C	D	E
LNAV MDA	500-1/2	457 (500-1/2)	500-7/8	457 (500-7/8)	
CIRCLING	500-1 454 (500-1)	780-1 734 (800-1)	820-2 1/4 774 (800-2 1/4)	820-2 1/2 774 (800-2 1/2)	820-2 3/4 774 (800-2 3/4)



SC-3, 31 OCT 2024 to 28 NOV 2024

SC-3, 31 OCT 2024 to 28 NOV 2024