

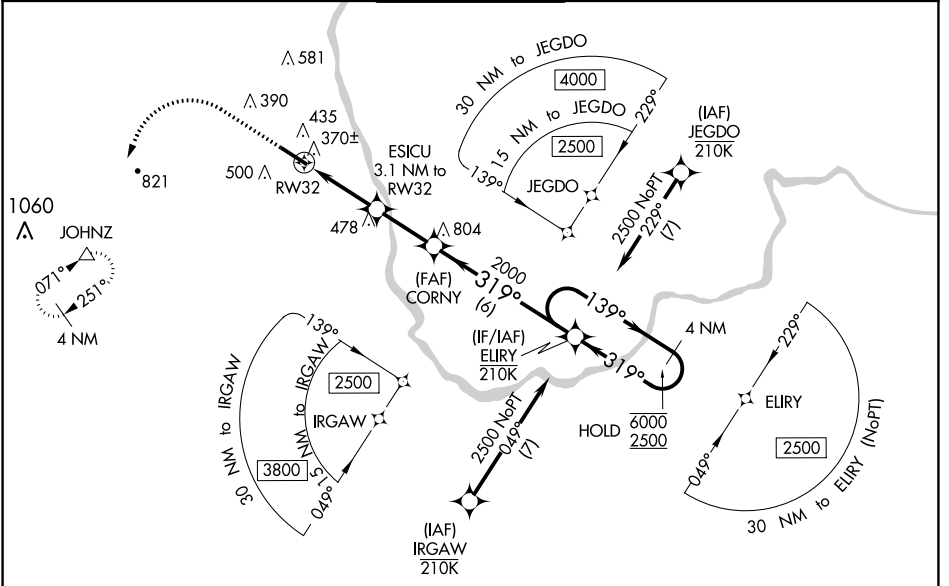
WAAS CH 73030 W32A	APP CRS 319°	Rwy Idg TDZE Apt Elev	5650 193 200
---------------------------------	------------------------	-----------------------------	---

RNAV (GPS) RWY 32

BOIRE FLD (ASH)

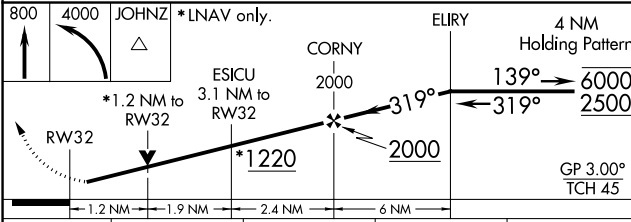
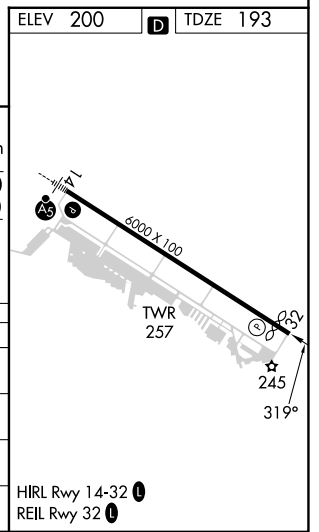
RNP APCH.		<p>MISSED APPROACH: Climb to 800 then climbing left turn to 4000 direct JOHNZ and hold, continue climb-in-hold to 4000.</p>		
<p>▼ Rwy 32 helicopter visibility reduction below ¾ SM NA. ▲ For uncompensated Baro-VNAV systems, LNAV/VNAV NA below -15°C or above 54°C.</p>				

ATIS 125.1	BOSTON APP CON 124.9 269,075	NASHUA TOWER ★ 133.2 (CTAF) 📻	GND CON 121.8	CLNC DEL 121.8
----------------------	--	--	-------------------------	--------------------------



NE-1, 31 OCT 2024 to 28 NOV 2024

NE-1, 31 OCT 2024 to 28 NOV 2024



CATEGORY	A	B	C	D
LPV DA		477-7/8	284 (300-7/8)	
LNAV/VNAV DA		633-1 1/4	440 (500-1 1/4)	
LNAV MDA	620-1	427 (500-1)	620-1 1/4	427 (500-1 1/4)
C CIRCLING	820-1 620 (700-1)	840-1 640 (700-1)	900-2 700 (700-2)	1000-2 1/2 800 (800-2 1/2)

HIRL Rwy 14-32 **📻**
REIL Rwy 32 **📻**