

WAAS CH 57922 W21A	APP CRS 208°	Rwy Idg 7300 TDZE 1305 Apt Elev 1317
--	------------------------	---

RNAV (GPS) RWY 21

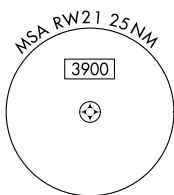
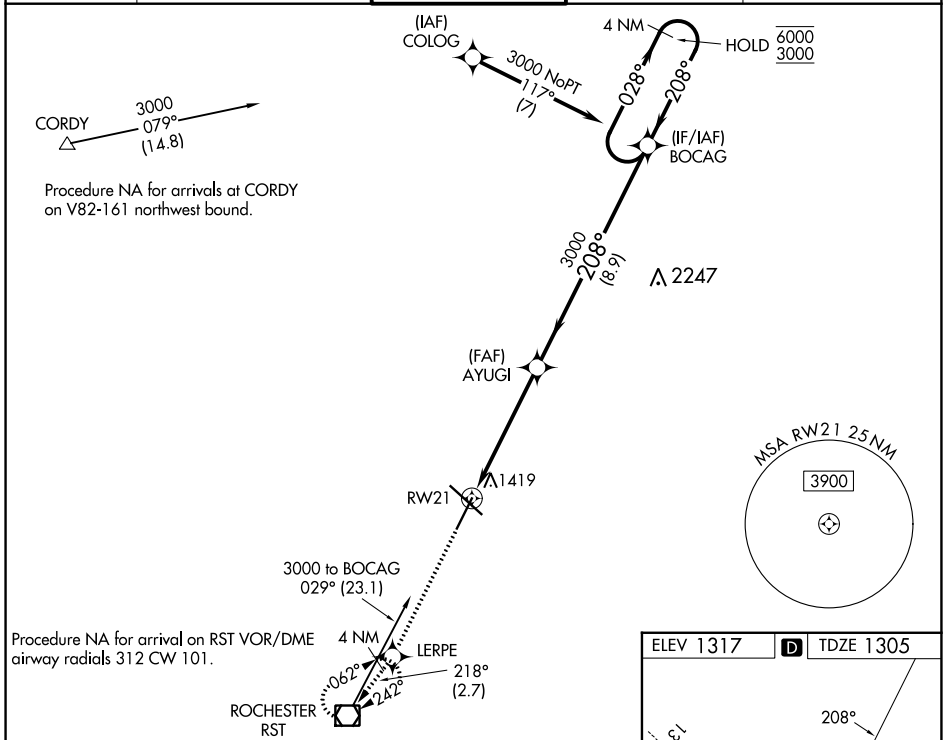
ROCHESTER INTL (RST)

RNP APCH - GPS.

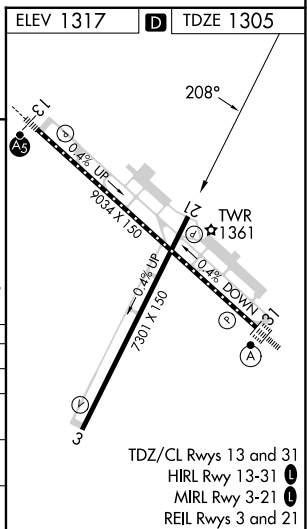
ASR For uncompensated Baro-VNAV systems, LNAV/VNAV NA below -28°C or above 54°C.

MISSED APPROACH: Climb to 3000 direct LERPE and on track 218° to RST VOR/DME and hold.

ATIS 120.5	ROCHESTER APP CON ★ 119.8 251.125	ROCHESTER TOWER ★ 118.3 (CTAF) 0 257.8	GND CON 121.9	UNICOM 122.95
----------------------	---	--	-------------------------	-------------------------



3000	LERPE	tr 218°	RST	AYUGI	BOACAG	4 NM Holding Pattern
↑	✧		◻	3000		
		1.1 NM to RWY 21				
				208°	208°	6000 3000
				3000		GP 3.00° TCH 50
		1.1 NM	4.2 NM	8.9 NM		
CATEGORY	A	B	C	D		
LPV DA		1555-1	250 (300-1)			
LNAV/VNAV DA		1603-1	298 (300-1)			
LNAV MDA		1680-1	375 (400-1)			
CIRCLING	1720-1 403 (500-1)	1780-1 463 (500-1)	1900-1½ 583 (600-1½)	1900-2 583 (600-2)		



NC-1, 31 OCT 2024 to 28 NOV 2024

NC-1, 31 OCT 2024 to 28 NOV 2024