

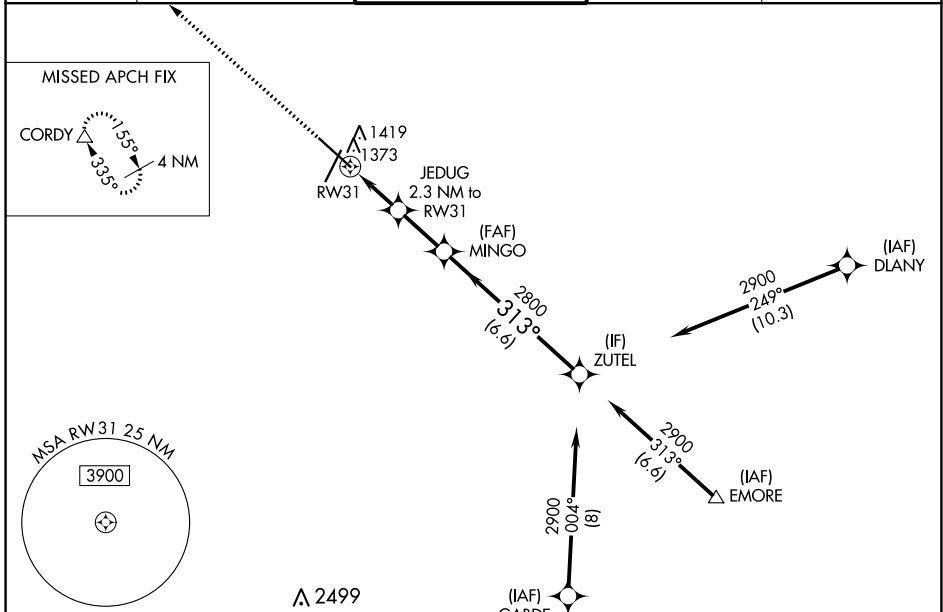
WAAS CH 49028 W31A	APP CRS 313°	Rwy Idg TDZE Apt Elev	9033 1304 1317
--	------------------------	-----------------------------	---

RNAV (GPS) RWY 31

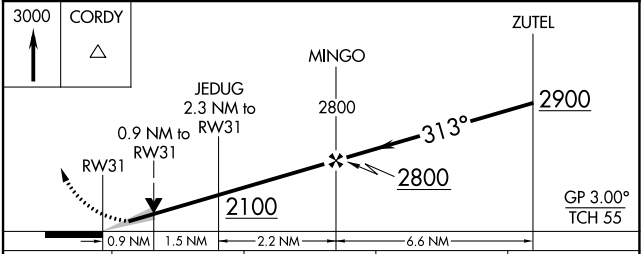
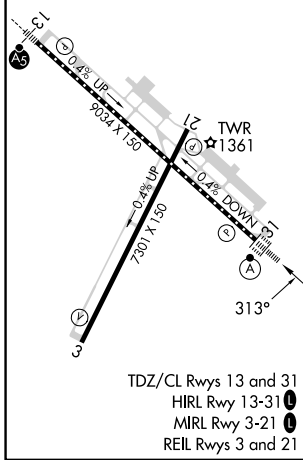
ROCHESTER INTL (RST)

RNP APCH - GPS. ASR For uncompensated Baro-VNAV systems, LNAV/VNAV NA below -20°C or above 54°C. For inop ALS, increase LNAV/VNAV all Cats visibility to RVR 4500.	ALSf-2 	MISSED APPROACH: Climb to 3000 direct CORDY and hold.
---	------------	---

ATIS 120.5	ROCHESTER APP CON* 119.8 251.125	ROCHESTER TOWER* 118.3 (CTAF) 257.8	GND CON 121.9	UNICOM 122.95
----------------------	--	---	-------------------------	-------------------------



ELEV 1317	D	TDZE 1304
-----------	----------	-----------



CATEGORY	A	B	C	D
LPV DA	1504/18 200 (200-½)			
LNAV/VNAV DA	1579/24 275 (300-½)			
LNAV MDA	1640/24	336 (400-½)	1640/26	336 (400-½)
C CIRCLING	1720-1 403 (500-1)	1780-1 463 (500-1)	1900-1½ 583 (600-1½)	1900-2 583 (600-2)

NC-1, 31 OCT 2024 to 28 NOV 2024

NC-1, 31 OCT 2024 to 28 NOV 2024