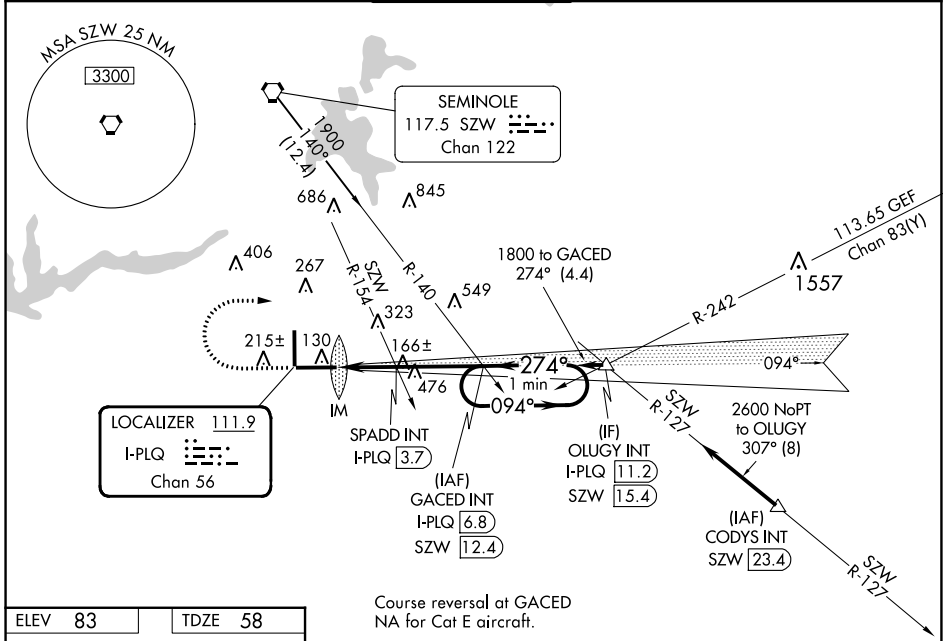


LOC/DME I-PLQ 111.9 Chan 56	APP CRS 274°	Rwy Idg TDZE Apt Elev	8000 58 83
---	------------------------	-----------------------------	---------------------------------------

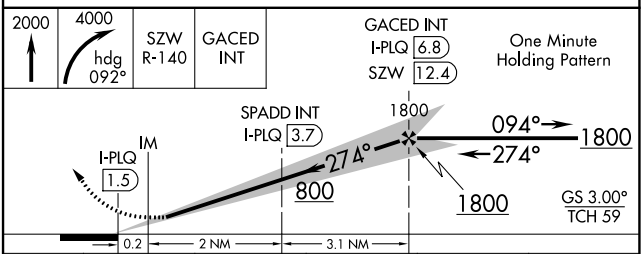
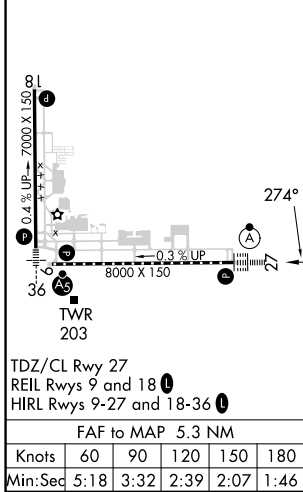
ILS or LOC RWY 27

TALLAHASSEE INTL (TLH)

DME required.		ALSF-2 	MISSED APPROACH: Climb to 2000 then climbing right turn to 4000 on heading 092° and on SZW VORTAC R-140 to GACED INT/SZW 12.4 DME and hold, continue climb-in-hold to 4000.		
For inop ALS, increase S-ILS 27 Cat E visibility to RVR 4000 and S-LOC 27 Cats C, D and E visibility to 2 SM. SPADD FIX MINIMUMS S-LOC 27 Cat E visibility to RVR 4000.					
ATIS 119.45 239.25	TALLAHASSEE APP CON ★ 135.8 317.4	TALLAHASSEE TOWER ★ 118.7 (CTAF) 257.8	GND CON 121.9 348.6	CLNC DEL 126.65 275.8	UNICOM 123.075



ELEV 83	TDZE 58
---------	---------



CATEGORY	A	B	C	D	E
S-ILS 27	258/18 200 (200-1/2)				
S-LOC 27	800/24 742 (800-1/2)	800/40 742 (800-3/4)	800-1 3/4 742 (800-1 3/4)		
CIRCLING	800-1 717 (800-1)	800-1 1/4 717 (800-1 1/4)	800-2 717 (800-2)	800-2 1/4 717 (800-2 1/4)	1000-3 917 (1000-3)
SPADD FIX MINIMUMS					
S-LOC 27	740/24	682 (700-1/2)	740-1 1/2	682 (700-1 1/2)	
CIRCLING	740-1	657 (700-1)	740-2 657 (700-2)	800-2 1/4 717 (800-2 1/4)	1000-3 917 (1000-3)

SE-3, 31 OCT 2024 to 28 NOV 2024

SE-3, 31 OCT 2024 to 28 NOV 2024