

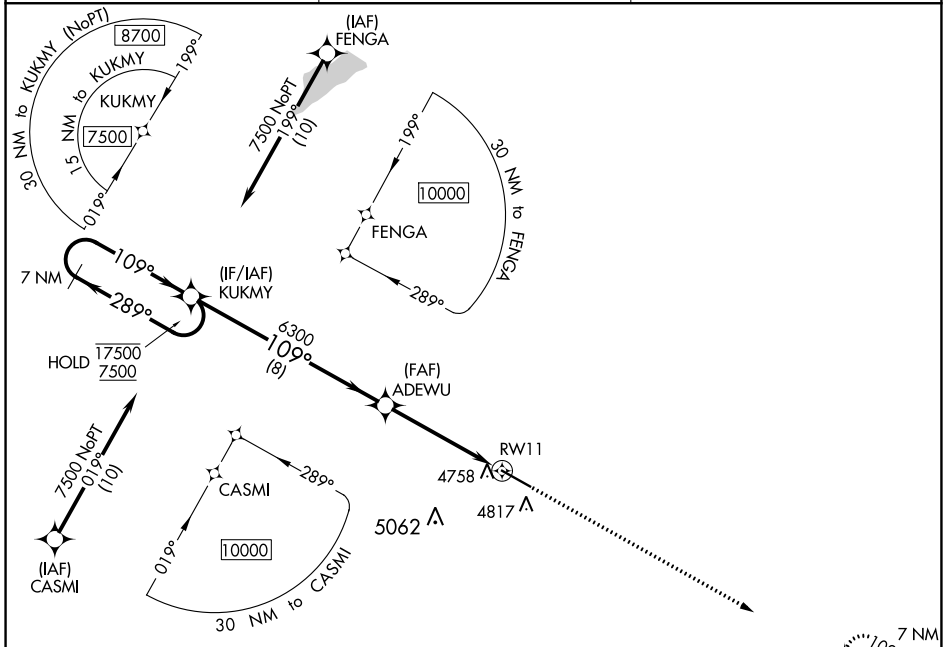
WAAS CH 82340 W11A	APP CRS 109°	Rwy Idg TDZE Apt Elev	7001 4716 4716
--	------------------------	-----------------------------	---

RNAV (GPS) RWY 11

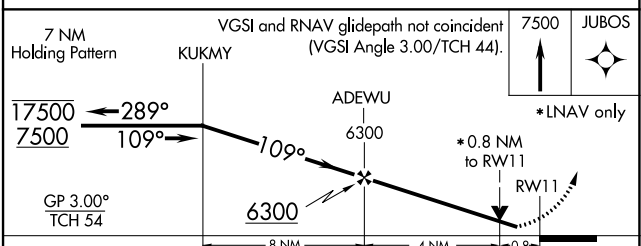
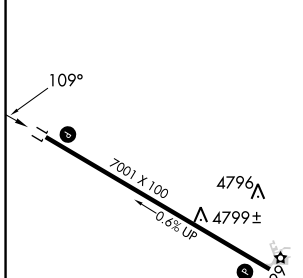
COLORADO PLAINS RGNL (AKO)

RNP APCH	MISSED APPROACH: Climb to 7500 direct JUBOS and hold.
<p>▼ Rwy 11 helicopter visibility reduction below 3/4 SM NA.</p> <p>▲ For uncompensated Baro-VNAV systems, LNAV/VNAV NA below -22°C or above 54°C.</p>	

ASOS 135.475	DENVER CENTER 133.95 317.55	UNICOM 122.8 (CTAF) 0
------------------------	---------------------------------------	---------------------------------



ELEV 4716	TDZE 4716
-----------	-----------



CATEGORY	A	B	C	D
LPV DA		4966-1	250 (300-1)	
LNAV/VNAV DA		4966-1	250 (300-1)	
LNAV MDA		5020-1	304 (400-1)	
<input checked="" type="checkbox"/> CIRCLING	5140-1 424 (500-1)	5260-1 544 (600-1)	5420-2 704 (800-2)	5420-2 1/4 704 (800-2 1/4)

MIRL Rwy 11-29 0
REIL Rwy 11 and 29 0

SW-1, 31 OCT 2024 to 28 NOV 2024

SW-1, 31 OCT 2024 to 28 NOV 2024