

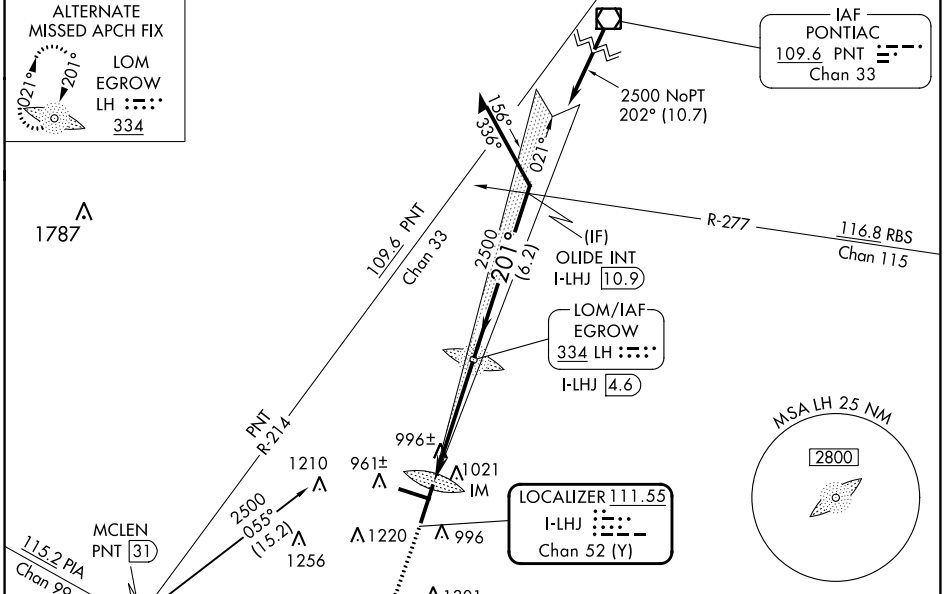
LOC/DME I-LHJ 111.55 Chan 52 (Y)	APP CRS 201°	Rwy Idg TDZE Apt Elev	8000 871 871
--	------------------------	-----------------------------	---

ILS RWY 20 (CAT II)

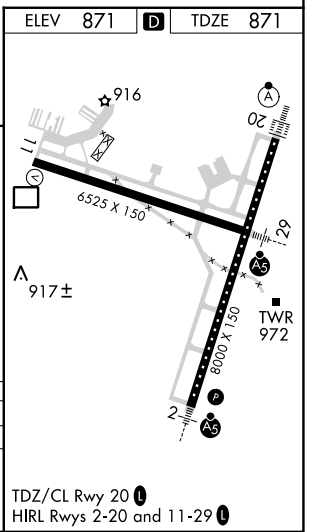
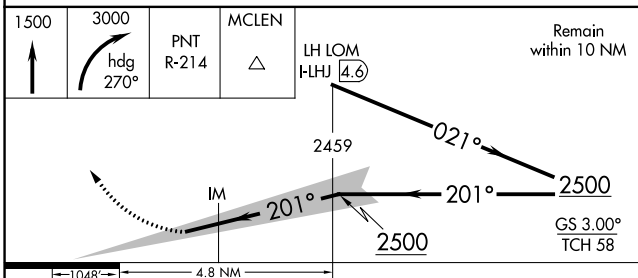
CENTRAL IL RGNL/BLOOMINGTON-NORMAL (BMI)

<p>Procedure NA when tower closed.</p>	ALSF-2 	MISSED APPROACH: Climb to 1500 then climbing right turn to 3000 on heading 270° and on PNT VOR/DME R-214 to MCLN INT/PNT 31 DME and hold.
--	------------	---

ATIS 119.575	SAINT LOUIS APP CON 128.725 256.9	BLOOMINGTON TOWER ★ 124.6 (CTAF) 269.575	GND CON 121.65	UNICOM 122.95
------------------------	---	--	--------------------------	-------------------------



ELEV 871	TDZE 871
----------	----------



CATEGORY	A	B	C	D
S-ILS-20	RA 122/12 100 DA 971			

CATEGORY II ILS - SPECIAL AIRCREW & AIRCRAFT CERTIFICATION REQUIRED

TDZ/CL Rwy 20
HIRL Rwy 2-20 and 11-29

EC-3, 31 OCT 2024 to 28 NOV 2024

EC-3, 31 OCT 2024 to 28 NOV 2024