

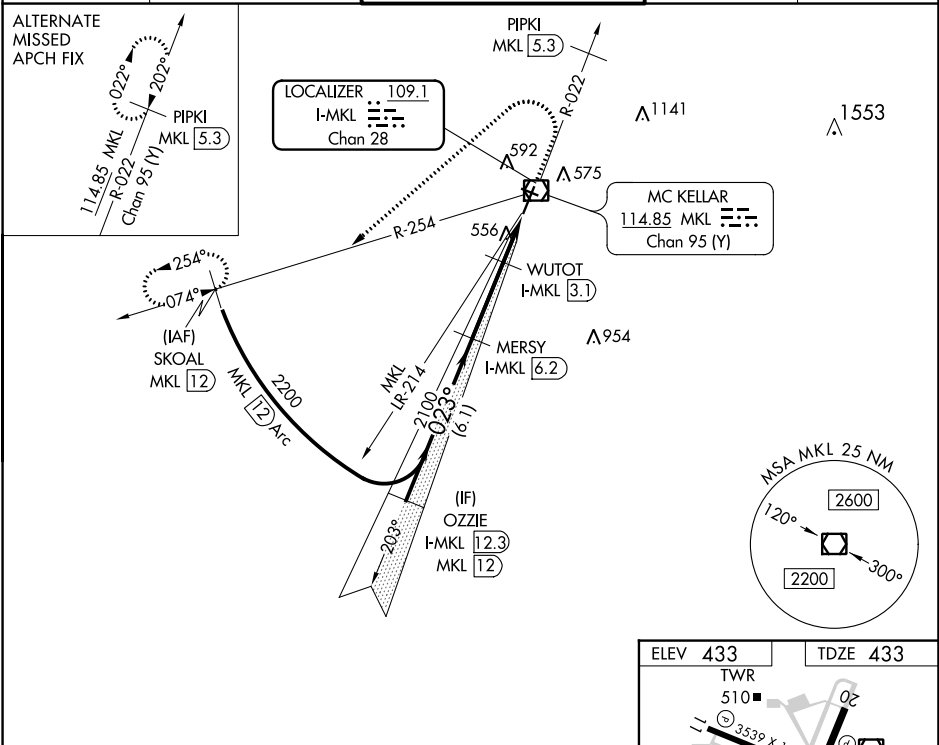
LOC/DME I-MKL 109.1 Chan 28	APP CRS 023°	Rwy Idg 6005 TDZE 433 Apt Elev 433
---	------------------------	---

ILS or LOC RWY 2

MC KELLAR-SIPES RGNL (MKL)

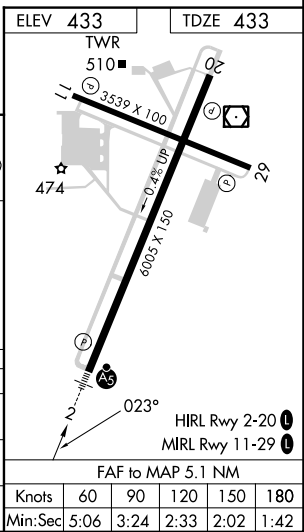
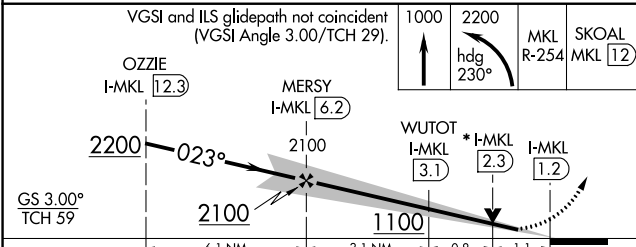
DME required. RADAR required for procedure entry.		MALS R	MISSED APPROACH: Climb to 1000 then climbing left turn to 2200 on heading 230° and MKL VOR/DME R-254 to SKOAL/MKL 12 DME and hold.
<p>▼ Rwy 2 helicopter visibility reduction below ¾ SM NA. For inop ALS, increase S-LOC 2 Cat A/B visibility to 1 SM and Cat C/D visibility 1½ SM.</p> <p>▲</p>			

ASOS 119.325	MEMPHIS CENTER 134.65 316.15	JACKSON TOWER ★ 127.15 (CTAF) 0 249.95	GND CON 120.9	UNICOM 122.95
------------------------	--	--	-------------------------	-------------------------



SE-1, 31 OCT 2024 to 28 NOV 2024

SE-1, 31 OCT 2024 to 28 NOV 2024



	1000	2200	MKL R-254	SKOAL MKL 12
	↑	hdg 230°		
CATEGORY	A	B	C	D
S-ILS 2		770-¾ 337 (400-¾)		
S-LOC 2		820-¾ 387 (400-¾)		
CIRCLING	900-1 467 (500-1)	920-1 487 (500-1)	960-1½ 527 (600-1½)	1100-2 667 (700-2)

ELEV 433	TDZE 433
TWR 510	
3539 X 100	6005 X 1.30
0.4% UP	
023°	
HIRL Rwy 2-20	MIRL Rwy 11-29
FAF to MAP 5.1 NM	
Knots	60 90 120 150 180
Min:Sec	5:06 3:24 2:33 2:02 1:42